

WAAS CH 42804 W28A	APP CRS 273°	Rwy Idg 13000 TDZE 651 Apt Elev 680
--	------------------------	--

RNAV (GPS) RWY 28R

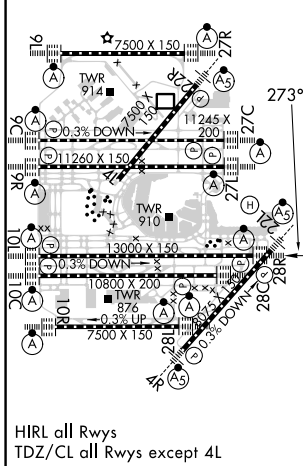
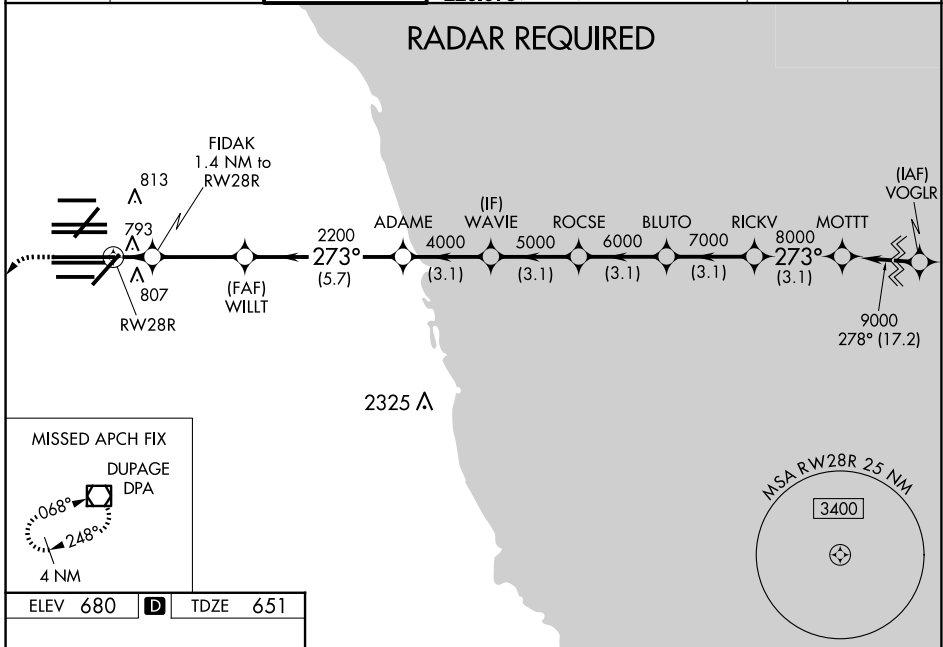
CHICAGO O'HARE INTL (ORD)

▼ For uncompensated Baro-VNAV systems, LNAV/VNAV NA below -19°C (-2°F) or above 54°C (130°F). Simultaneous approach authorized. DME/DME RNP-0.3 NA. For inop ALSF-2, increase LNAV/VNAV all Cats visibility to 1½ mile and LNAV Cats C/D visibility to RVR 6000. LNAV procedure NA during simultaneous operations. Use of FD or AP providing RNAV track guidance required during simultaneous operations.



MISSED APPROACH: Climb to 1200 then climbing left turn to 4000 direct DPA VOR/DME and hold.

D-ATIS 135.4 282.225	CHICAGO APP CON 119.0 292.125	O'HARE TOWER 132.7 348.0	GND CON (TWR NORTH) 124.125 (TWR SOUTH) 118.05 (ALL TWRs) 226.675	(TWR CENTER) 121.75 (OBND) 121.9 (IBND)	CLNC DEL 121.6	CPDLC
--	---	------------------------------------	---	---	--------------------------	-------



ELEV 680	D	TDZE 651																	
1200	4000	DPA	VGSI and RNAV glidepath not coincident (VGSI Angle 3.00/TCH 70).																
*LNAV only.																			
<table border="1"> <tr> <td>1.4</td> <td>3.3 NM</td> <td>5.7 NM</td> <td>3.1 NM</td> <td>3.1 NM</td> <td>3.1 NM</td> <td>3.1 NM</td> <td>3.1 NM</td> </tr> <tr> <td>ADAME</td> <td>WAVIE</td> <td>ROCSE</td> <td>BLUTO</td> <td>RICKV</td> <td>MOTT</td> <td colspan="2">GP 3.00° TCH 54</td> </tr> </table>				1.4	3.3 NM	5.7 NM	3.1 NM	3.1 NM	3.1 NM	3.1 NM	3.1 NM	ADAME	WAVIE	ROCSE	BLUTO	RICKV	MOTT	GP 3.00° TCH 54	
1.4	3.3 NM	5.7 NM	3.1 NM	3.1 NM	3.1 NM	3.1 NM	3.1 NM												
ADAME	WAVIE	ROCSE	BLUTO	RICKV	MOTT	GP 3.00° TCH 54													
CATEGORY	A	B	C	D															
LPV	DA	851/18	200 (200-½)																
LNAV/VNAV	DA	1041/45	390 (400-¾)																
LNAV MDA	1060/24	409 (400-½)	1060/40	409 (400-¾)															

EC-3, 20 MAR 2025 to 17 APR 2025

EC-3, 20 MAR 2025 to 17 APR 2025