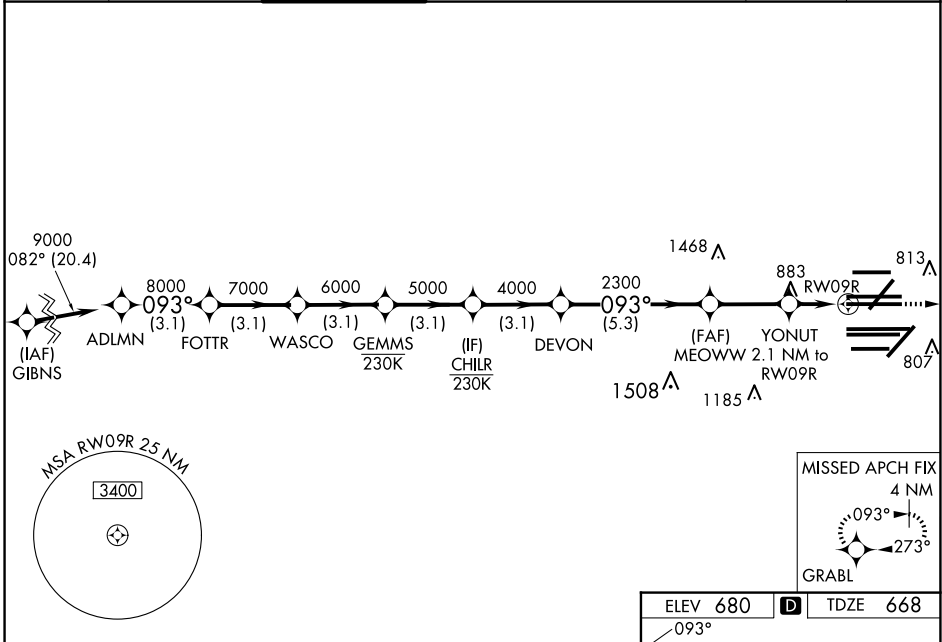


|  |                        |  |
|--|------------------------|--|
| WAAS<br>CH <b>78204</b><br><b>W09A</b> | APP CRS<br><b>093°</b> | Rwy ldg <b>11260</b><br>TDZE <b>668</b><br>Apt Elev <b>680</b> |
|--|------------------------|--|

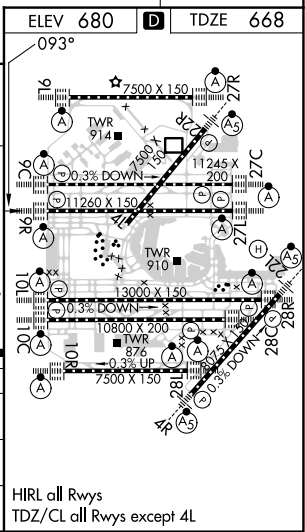
# RNAV (GPS) RWY 9R

CHICAGO O'HARE INTL (ORD)

|  |   |   |   |  |                          |       |
|--|---|---|---|--|--------------------------|-------|
| RNP APCH - GPS.                          |   | <p>Simultaneous approach authorized. LNAV procedure NA during simultaneous operations. Use of FD or AP required during simultaneous operations. For uncompensated Baro-VNAV systems, LNAV/VNAV NA below -19°C or above 54°C. For inop ALS, increase LNAV/VNAV all Cats visibility to RVR 4500. For inop ALS, increase LNAV Cats C/D visibility to 1 3/8 SM.</p> |   | <p>MISSED APPROACH:<br/>Climb to 4000 direct GRABL and hold.</p> |                          |       |
| D-ATIS<br><b>135.4</b><br><b>282.225</b> | CHICAGO APP CON<br><b>119.0 292.125</b> | O'HARE TOWER<br><b>126.9 348.0</b>  | GND CON (TWR NORTH)<br><b>124.125</b><br>(TWR SOUTH)<br><b>118.05</b><br>(ALL TWRs)<br><b>226.675</b> | (TWR CENTER)<br><b>121.75</b> (OBND)<br><b>121.9</b> (IBND)      | CLNC DEL<br><b>121.6</b> | CPDLC |



|  |         |            |               |        |               |        |             |        |        |
|--|---------|------------|---------------|--------|---------------|--------|-------------|--------|--------|
| VGSi and RNAV glidepath not coincident (VGSi Angle 3.00/TCH 76). |         | 4000 GRABL |               |        |               |        |             |        |        |
| ADLMN  | FOTTR   | WASCO      | GEMMS         | CHILR  | DEVON         | MEOWW  | YONUT       | RW09R  |        |
| 9000   | 8000    | 7000       | 6000          | 5000   | 4000          | 2300   | 1380        |        |        |
| GP 3.00°   |         |            |               |        |               |        |             |        |        |
|  | 3.1 NM  | 3.1 NM     | 3.1 NM        | 3.1 NM | 3.1 NM        | 5.3 NM | 2.8 NM      | 0.9 NM | 1.2 NM |
| CATEGORY   | A       |            | B             |        | C             |        | D           |        |        |
| LPV DA   |         |            | 868/18        |        | 200 (200-1/2) |        |             |        |        |
| LNAV/VNAV DA   |         |            | 976/24        |        | 308 (300-1/2) |        |             |        |        |
| LNAV MDA   | 1140/24 |            | 472 (500-1/2) |        | 1140/50       |        | 472 (500-1) |        |        |



EC-3, 20 MAR 2025 to 17 APR 2025

EC-3, 20 MAR 2025 to 17 APR 2025