

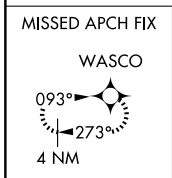
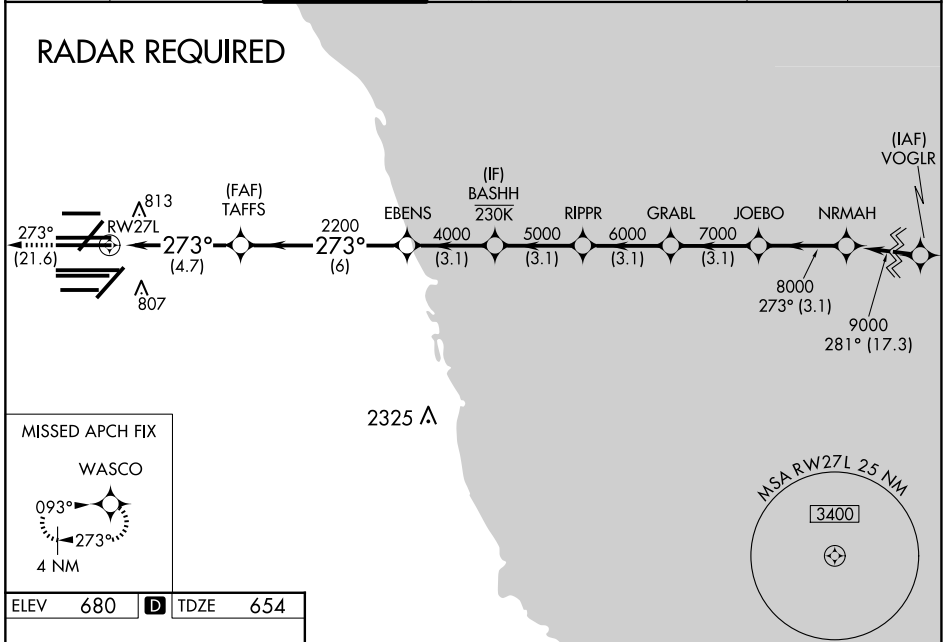
APP CRS	Rwy Idg	11260
273°	TDZE	654
	Apt Elev	680

RNAV (RNP) Y RWY 27L

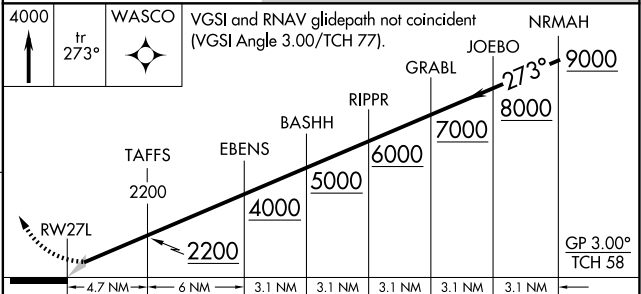
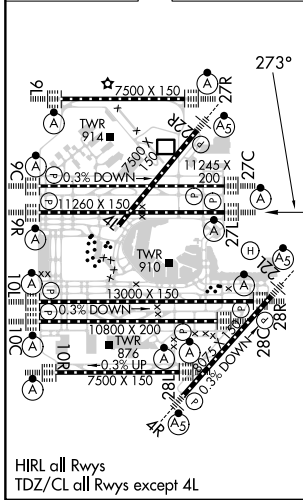
CHICAGO O'HARE INTL (ORD)

RNP AR APCH - GPS.				MISSED APPROACH: Climb to 4000 on track 273° to WASCO and hold.	
Simultaneous approach authorized. Use of FD or AP required during simultaneous operations. For uncompensated Baro-VNAV systems, procedure NA below -19°C or above 54°C.					

D-ATIS 135.4 282.225	CHICAGO APP CON 119.0 292.125	O'HARE TOWER 126.9 348.0	GND CON (TWR NORTH) 124.125 (TWR SOUTH) 118.05 (ALL TWRs) 226.675	(TWR CENTER) 121.75 (OBND) 121.9 (IBND)	CLNC DEL 121.6	CPDLC
--	---	------------------------------------	---	---	--------------------------	-------



ELEV	680	D	TDZE	654
------	------------	----------	------	------------



CATEGORY	A	B	C	D
RNP 0.15 DA		989/26	335 (400-½)	
RNP 0.30 DA		1133/50	479 (500-1)	

AUTHORIZATION REQUIRED

EC-3, 20 MAR 2025 to 17 APR 2025

EC-3, 20 MAR 2025 to 17 APR 2025