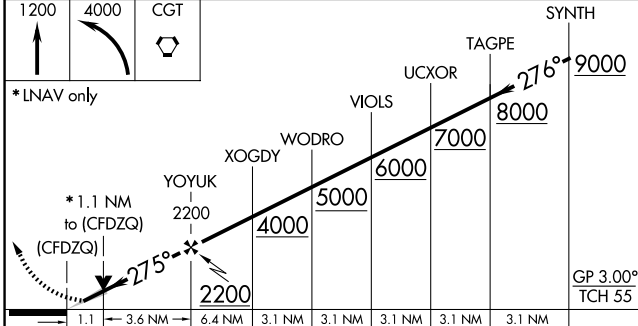
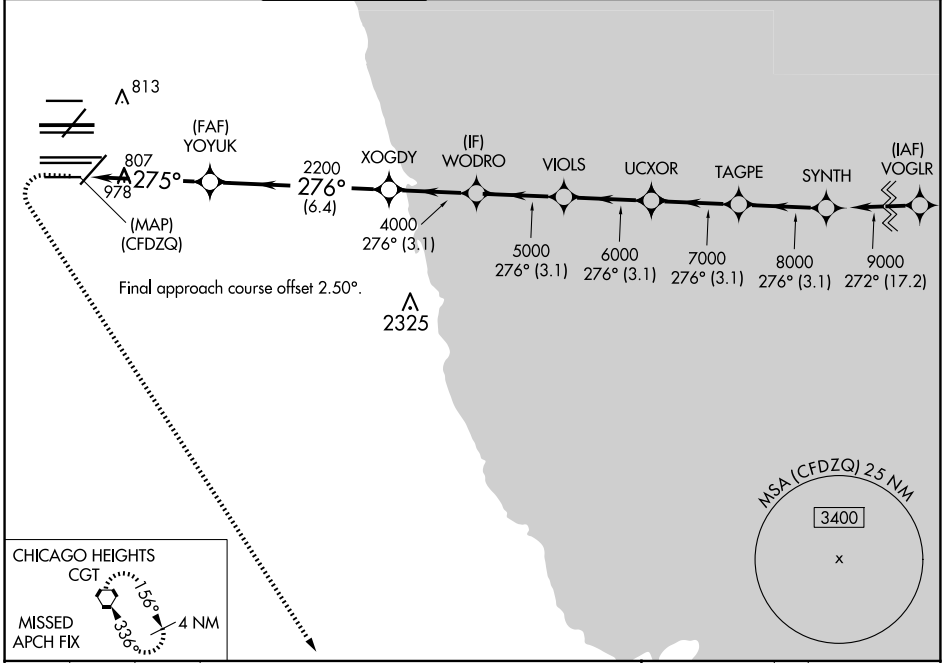


WAAS CH 93839 W28E	APP CRS 275°	Rwy Idg TDZE Apt Elev	7500 667 680
--	------------------------	-----------------------------	---

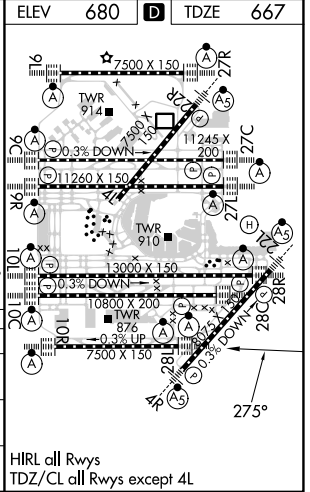
RNAV (GPS) Y RWY 28L

CHICAGO O'HARE INTL (ORD)

RNP APCH		MISSED APPROACH: Climb to 1200 then climbing left turn to 4000 direct CGT VORTAC and hold.	
Simultaneous approach authorized. LNAV procedure NA during simultaneous operations. For uncompensated Baro-VNAV systems, LNAV/VNAV NA below -19°C or above 54°C. Use of FD or AP required during simultaneous operations.		ALSF-2 	GND CON (TWR CENTER) 121.75 (OBND) (TWR NORTH) 124.125 (TWR SOUTH) 118.05 (ALL TWRS) 226.675
D-ATIS 135.4 282.225	CHICAGO APP CON 119.0 292.125	O'HARE TOWER 133.0 348.0	CLNC DEL 121.6
			CPDLC



CATEGORY	A	B	C	D
LPV DA	917/24		250 (300-1/2)	
LNAV/VNAV DA	1090/40		423 (500-3/4)	
LNAV MDA	1060/24	393 (400-1/2)	1060/35	393 (400-5/8)



EC-3, 20 MAR 2025 to 17 APR 2025

EC-3, 20 MAR 2025 to 17 APR 2025