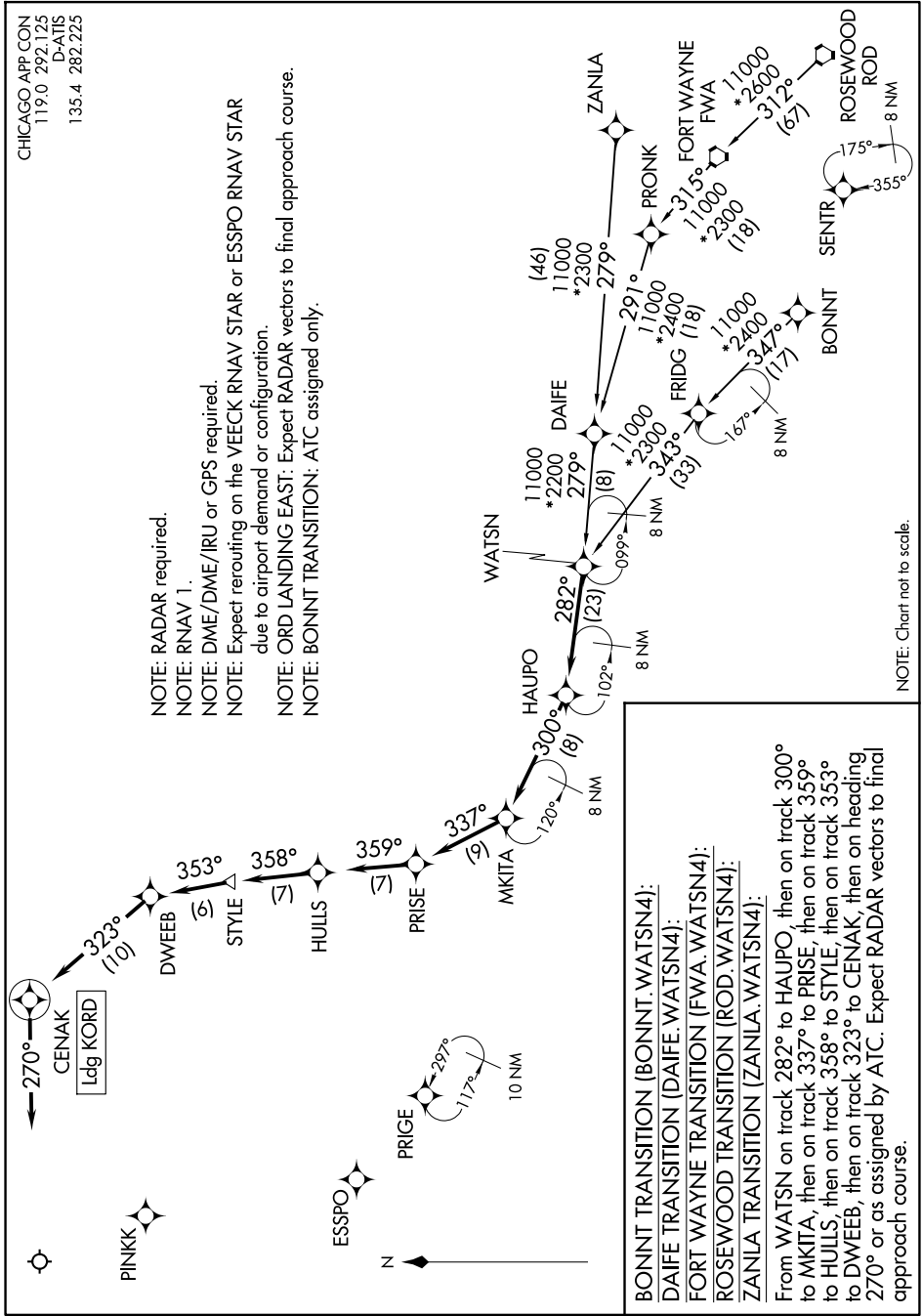


WATSN FOUR ARRIVAL (RNAV)

CHICAGO APP CON
119.0 292.125
D-ATIS
135.4 282.225

- NOTE: RADAR required.
- NOTE: RNAV 1.
- NOTE: DME/DME/IRU or GPS required.
- NOTE: Expect rerouting on the VEECK RNAV STAR or ESSPO RNAV STAR due to airport demand or configuration.
- NOTE: ORD LANDING EAST: Expect RADAR vectors to final approach course.
- NOTE: BONNT TRANSITION: ATC assigned only.



BONNT TRANSITION (BONNT.WATSN4):
DAIFE TRANSITION (DAIFE.WATSN4):
FORT WAYNE TRANSITION (FWA.WATSN4):
ROSEWOOD TRANSITION (ROD.WATSN4):
ZANLIA TRANSITION (ZANLIA.WATSN4):

From WATSN on track 282° to HAUPO, then on track 300° to MKITA, then on track 337° to PRISE, then on track 359° to HULLS, then on track 358° to STYLE, then on track 353° to DWEEB, then on track 323° to CENAK, then on heading 270° or as assigned by ATC. Expect RADAR vectors to final approach course.

NOTE: Chart not to scale.

EC-3, 20 MAR 2025 to 17 APR 2025

EC-3, 20 MAR 2025 to 17 APR 2025

WATSN FOUR ARRIVAL (RNAV)