

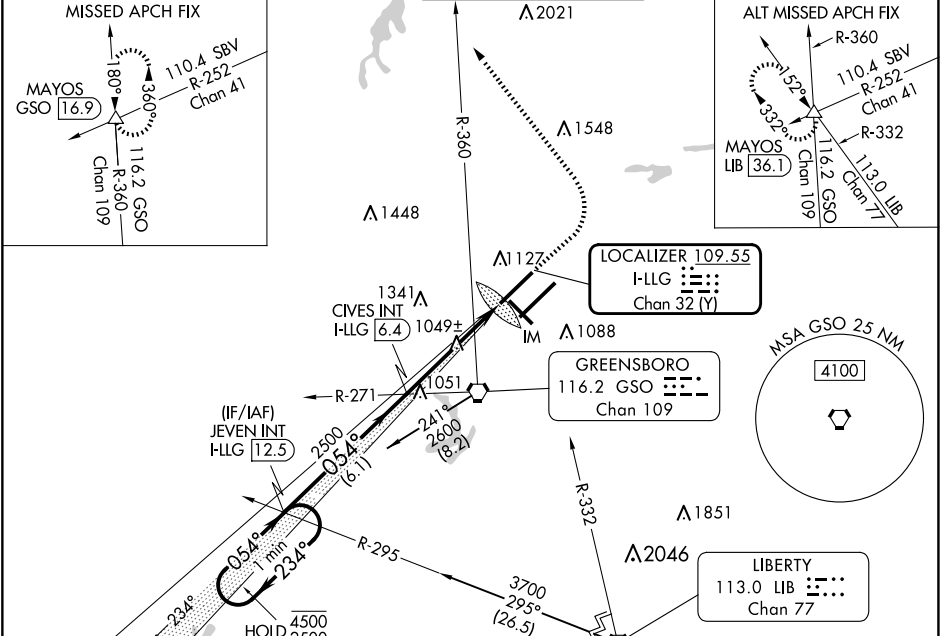
LOC/DME I-LLG 109.55 Chan 32(Y)	APP CRS 054°	Rwy Idg TDZE Apt Elev 9000 916 926
--	------------------------	--

ILS or LOC RWY 5L

PIEDMONT TRIAD INTL (GSO)

DME or RADAR required for procedure entry at LIB VORTAC.	ALSF-2	MISSED APPROACH: Climb to 1400 then climbing left turn to 3100 on heading 330° and GSO VORTAC R-360 to MAYOS INT/GSO 16.9 DME and hold.
--	--------	---

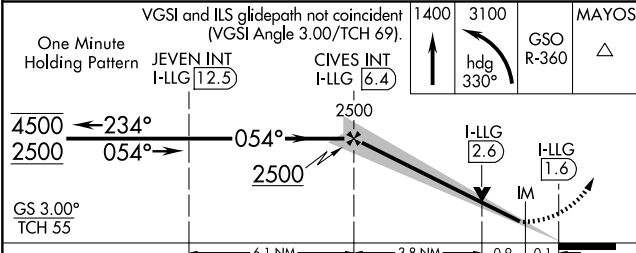
D-ATIS 128.55	GREENSBORO APP CON 124.35 269.225 126.6 327.075 (250°-049°) (050°-249°)	GREENSBORO TOWER 119.1 290.325	GND CON 121.9 348.6	CLNC DEL 121.75
-------------------------	---	--	-------------------------------	---------------------------



SE-2, 20 MAR 2025 to 17 APR 2025

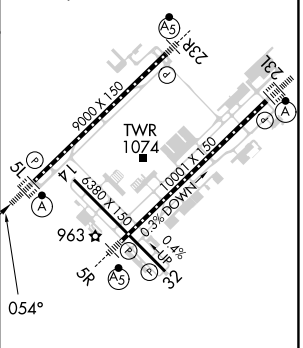
SE-2, 20 MAR 2025 to 17 APR 2025

One Minute Holding Pattern	JEVEN INT I-LLG [12.5]	CIVES INT I-LLG [6.4]	1400	3100	GSO R-360	MAYOS
----------------------------	------------------------	-----------------------	------	------	-----------	-------



CATEGORY	A	B	C	D
S-ILS 5L	1116/18		200 (200-½)	
S-LOC 5L	1300/24 384 (400-½)		1300/35 384 (400-¾)	
CIRCLING	1440-1 514 (600-1)		1700-2¼ 774 (800-2¼) 1700-2½ 774 (800-2½)	

ELEV 926 **D** TDZE 916
 TDZ/CL Rwy 5L, 23R and 23L
 REIL Rwy 32
 HIRL Rwy 14-32, 5R-23L and 5L-23R



FAF to MAP 4.7 NM					
Knots	60	90	120	150	180
Min:Sec	4:42	3:08	2:21	1:53	1:34