

QUAKER EIGHT DEPARTURE

GREENSBORO DEP CON
124.35 269.225 (250°-049°)
126.6 327.075 (050°-249°)
D-ATIS 128.55
CLNC DEL 121.75
GND CON
121.9 348.6
GREENSBORO TOWER
119.1 290.325

LYNCHBURG
109.2 LYH
Chan 29

RADAR required.
RICHMOND Transition requires DME.

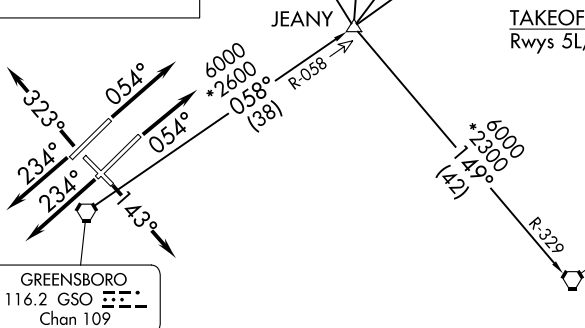
SOUTH BOSTON
110.4 SBV
Chan 41

ROANOKE
109.4 ROA
Chan 31

RICHMOND
114.1 RIC
Chan 88

**TOP ALTITUDE:
ASSIGNED BY ATC**

TAKEOFF MINIMUMS
Rwys 5L/R, 14, 23L/R, 32: Standard.



NOTE: Chart not to scale.

DEPARTURE ROUTE DESCRIPTION

TAKEOFF RUNWAYS 5L/R: Climb on heading 054°, thence. . . .

TAKEOFF RUNWAY 14: Climb on heading 143°, thence. . . .

TAKEOFF RUNWAYS 23L/R: Climb on heading 234°, thence. . . .

TAKEOFF RUNWAY 32: Climb on heading 323°, thence. . . .

. . . .maintain altitude assigned by ATC. RADAR vectors will be provided to intercept assigned radial associated with the issued transition, or if no transition assigned, RADAR vectors will be provided to the appropriate fix. Expect requested altitude/flight level 10 minutes after departure.

LYNCHBURG TRANSITION (QUAK8.LYH): From over GSO VORTAC on GSO R-058 to JEANY then on LYH R-191 to LYH VOR/DME.

RALEIGH/DURHAM TRANSITION (QUAK8.RDU): From over GSO VORTAC on GSO R-058 to JEANY then on RDU R-329 to RDU VORTAC.

RICHMOND TRANSITION (QUAK8.RIC): From over GSO VORTAC on GSO R-058 to JEANY then on GSO R-058 and RIC R-246 to CREWE then on RIC R-246 to RIC VORTAC.

ROANOKE TRANSITION (QUAK8.ROA): From over GSO VORTAC on GSO R-058 to JEANY then on ROA R-152 to ROA VOR/DME.

SOUTH BOSTON TRANSITION (QUAK8.SBV): From over GSO VORTAC on GSO R-058 to JEANY then on SBV R-229 to SBV VORTAC.

SE-2, 20 MAR 2025 to 17 APR 2025

SE-2, 20 MAR 2025 to 17 APR 2025