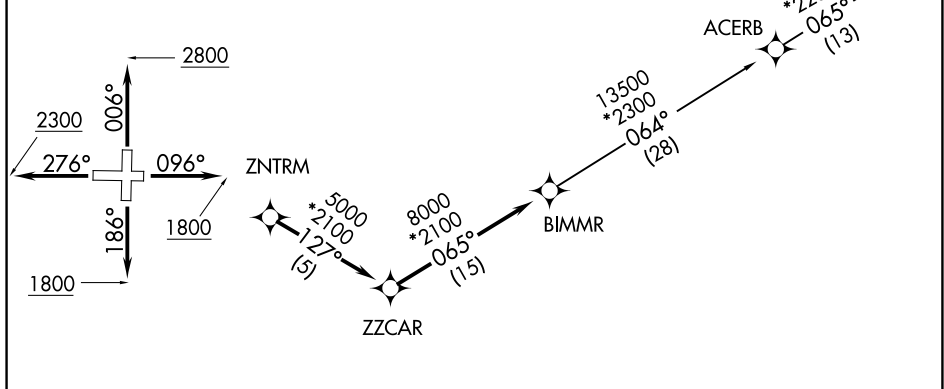


BIMMR THREE DEPARTURE (RNAV)

ATIS 127.075 GND CON 121.25 GREENVILLE TOWER ★ 119.9 257.7 UNICOM 122.95 GREER DEP CON ★ 118.8 270.275	RNAV 1 - DME/DME/IRU or GPS. RADAR required.	TOP ALTITUDE: 3000
---	---	-------------------------------



TAKEOFF MINIMUMS

Rwys 1, 19: Standard.

Rwy 10: 300-1½ or standard with minimum climb of 355' per NM to 1300.

Rwy 28: 300-2½ or standard with minimum climb of 221' per NM to 1500, or alternatively, with standard takeoff minimums and a normal 200' per NM climb gradient, takeoff must occur no later than 1900' prior to DER.

NOTE: Do not exceed 250K until advised by ATC.

NOTE: For turbojets only.

NOTE: Chart not to scale.

SE-2, 20 MAR 2025 to 17 APR 2025

SE-2, 20 MAR 2025 to 17 APR 2025

<p>DEPARTURE ROUTE DESCRIPTION</p> <p><u>TAKEOFF RUNWAY 1:</u> Climb on heading 006° to 2800 before turning west or northwest for RADAR vectors to ZNTRM, thence. . . .</p> <p><u>TAKEOFF RUNWAY 10:</u> Climb on heading 096° to 1800 before turning west or northwest for RADAR vectors to ZNTRM, thence. . . .</p> <p><u>TAKEOFF RUNWAY 19:</u> Climb on heading 186° to 1800 before turning north for RADAR vectors to ZNTRM, thence. . . .</p> <p><u>TAKEOFF RUNWAY 28:</u> Climb on heading 276° to 2300 before turning north or northwest for RADAR vectors to ZNTRM, thence. . . .</p> <p>. . . on depicted route to BIMMR. Then on assigned transition. Maintain 3000. Expect clearance to filed altitude within 10 minutes after departure.</p> <p><u>ACERB TRANSITION (BIMMR3.ACERB)</u></p> <p><u>DRIVN TRANSITION (BIMMR3.DRIVN)</u></p>
--