

WAAS CH 53413 W01A	APP CRS 006°	Rwy Idg TDZE 1015 Apt Elev 1048	5393
--	------------------------	---	-------------

RNAV (GPS) RWY 1

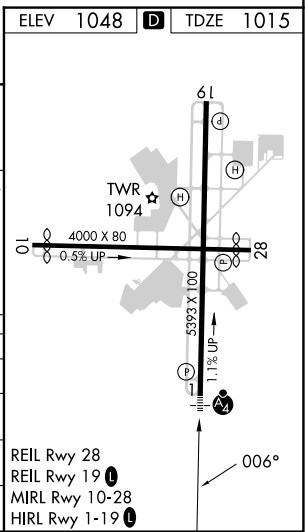
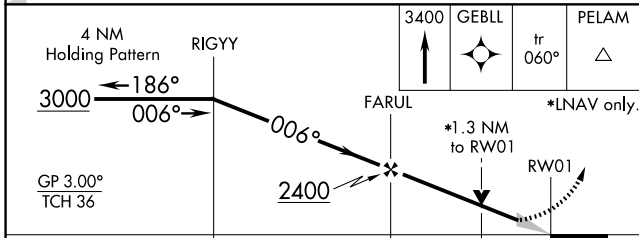
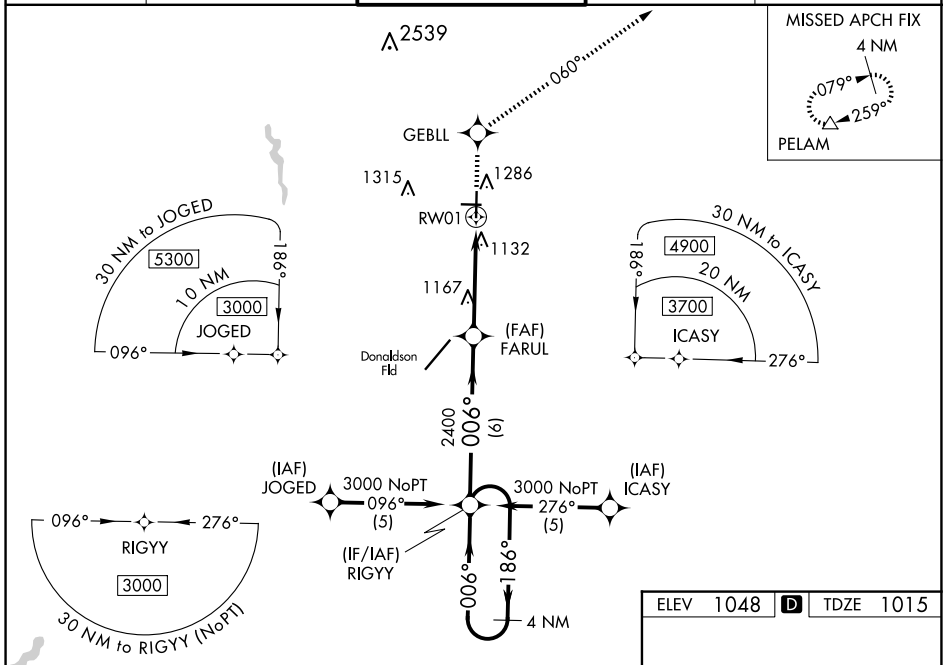
GREENVILLE DOWNTOWN (GMU)

⚠ For uncompensated Baro-VNAV systems, LNAV/VNAV NA below -17°C (2°F) or above 54°C (130°F). DME/DME RNP-0,3 NA. Baro-VNAV and VDP NA when using Greer altimeter setting. When local altimeter setting not received, use Greer altimeter setting and increase all DA 29 feet and all MDA 40 feet, increase LPV and LNAV/VNAV all Cats, LNAV Cat D and Circling Cat C visibility ¼ mile. Inop table does not apply to LNAV/VNAV all Cats and LNAV Cat C.

MALSF

MISSED APPROACH:
Climb to 3400 direct GEBLL and via track 060° to PELAM and hold.

ATIS 127.075	GREER APP CON ★ 118.8 270.275	GREENVILLE TOWER ★ 119.9 (CTAF) 0 257.7	GND CON 121.25	UNICOM 122.95
------------------------	---	---	--------------------------	-------------------------



CATEGORY	A	B	C	D
LPV DA		1215-¾	200 (200-¾)	
LNAV/VNAV DA		1415-1½	400 (400-1½)	
LNAV MDA	1440-¾	425 (400-¾)	1440-1¼	425 (400-1¼)
C CIRCLING	1620-1	572 (600-1)	1780-2 732 (800-2)	1860-2¾ 812 (900-2¾)

SE-2, 20 MAR 2025 to 17 APR 2025

SE-2, 20 MAR 2025 to 17 APR 2025