

| | | |
|--|------------------------|---|
| WAAS CH 87037 W28A | APP CRS 276° | Rwy Idg 3463 TDZE 1013 Apt Elev 1048 |
|--|------------------------|---|

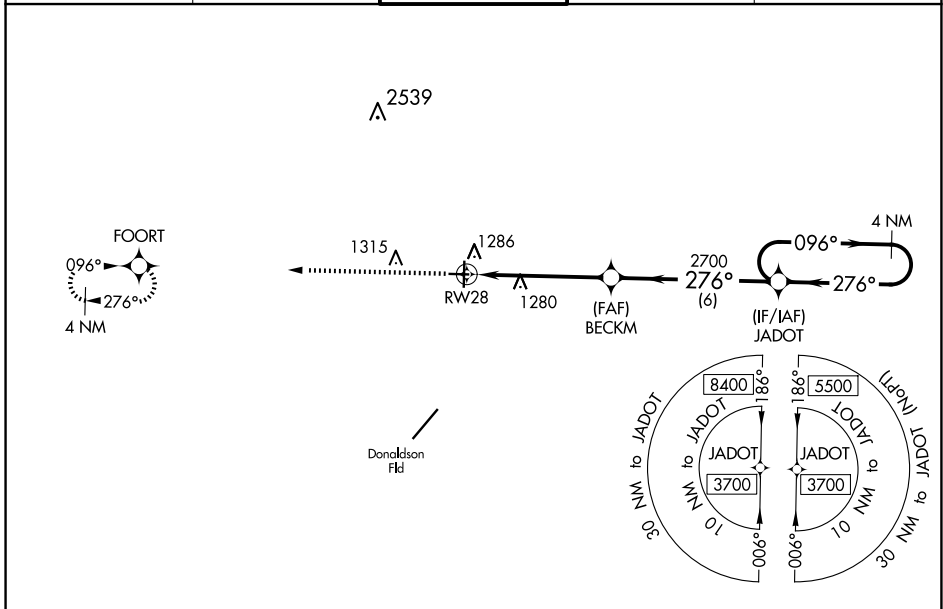
RNAV (GPS) RWY 28

GREENVILLE DOWNTOWN (GMU)

⚠ Baro-VNAV NA when using Greer altimeter setting. For uncompensated Baro-VNAV systems, LNAV/VNAV NA below -6°C (22°F) or above 54°C (130°F). DME/DME RNP-0.3 NA.
⚠ When local altimeter setting not received, use Greer altimeter setting and increase all DA 29 feet and all MDA 40 feet; increase LNAV/VNAV all Cats and LNAV Cats C/D visibility ½ mile. Helicopter visibility reduction below 1 SM NA. Night landing: Rwy 19 NA.

MISSED APPROACH:
Climb to 3700 direct FOORT and hold.

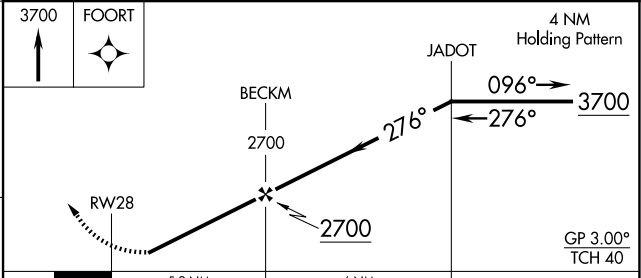
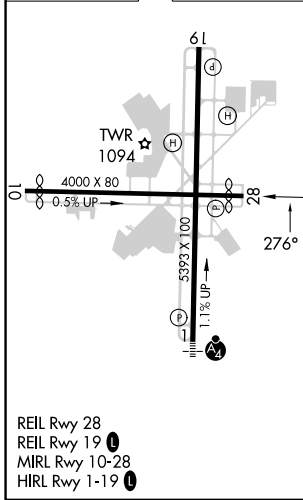
| | | | | |
|------------------------|---|---|--------------------------|-------------------------|
| ATIS 127.075 | GREER APP CON ★ 118.8 270.275 | GREENVILLE TOWER ★ 119.9 (CTAF) 0 257.7 | GND CON 121.25 | UNICOM 122.95 |
|------------------------|---|---|--------------------------|-------------------------|



SE-2, 20 MAR 2025 to 17 APR 2025

SE-2, 20 MAR 2025 to 17 APR 2025

| | | |
|-----------|----------|-----------|
| ELEV 1048 | D | TDZE 1013 |
|-----------|----------|-----------|



| CATEGORY | A | B | C | D |
|-------------------|----------------------|-------------|-----------------------|-------------------------|
| LPV DA | 1263-1 250 (300-1) | | | |
| LNAV/VNAV DA | 1463-1½ 450 (500-1½) | | | |
| LNAV MDA | 1540-1 | 527 (500-1) | 1540-1½ | 527 (500-1½) |
| C CIRCLING | 1620-1 | 572 (600-1) | 1780-2 732 (800-2) | 1860-2¾ 812 (900-2¾) |