

HI-TACAN RWY 7

TACAN TOL Chan 72	APCH CRS 068°	Rwy ldg 10,599 TDZE 683 Arprt Elev 684
-----------------------------	-------------------------	---

[USAF]

EUGENE F KRANZ TOLEDO EXPRESS (KTOL)

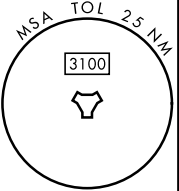
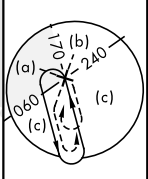
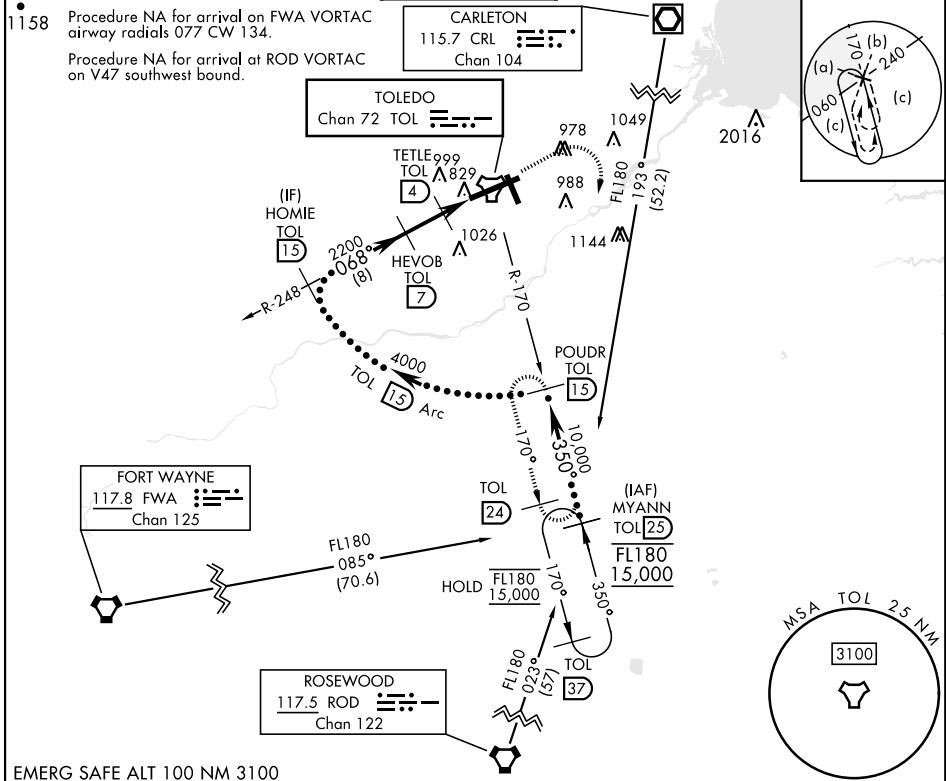
V * When ALS inop, increase CAT E vis to 1 $\frac{1}{2}$ mile.



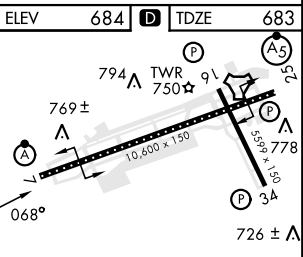
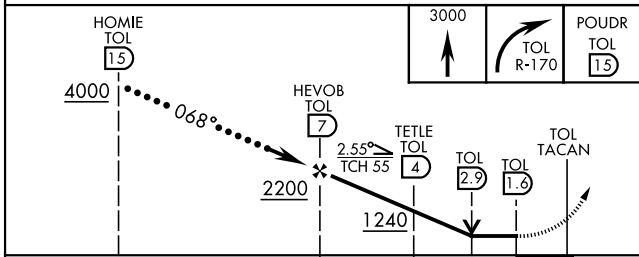
MISSED APPROACH: Climb to 3000 then right turn on TOL TACAN R-170 to POUDR/15 DME and hold.

ATIS 118.75 290.225	TOLEDO APP CON 126.1 317.55	TOLEDO TOWER 118.1 285.4	GND CON 121.9 348.6	CLNC DEL 121.75 348.6	ASR
-------------------------------	---------------------------------------	------------------------------------	-------------------------------	---------------------------------	-----

1158 Procedure NA for arrival on FWA VORTAC airway radials 077 CW 134.
Procedure NA for arrival at ROD VORTAC on V47 southwest bound.



EMERG SAFE ALT 100 NM 3100



CATEGORY	C	D	E
S-7 *	1140/45	457	(500-7%)
C CIRCLING	1360-2 676 (700-2)	1400-2 1/4 716 (800-2 1/4)	1400-2 1/2 716 (800-2 1/2)

ELEV	684	TDZE	683
HIRL Rwy 7-25	MIRL Rwy 16-34	REIL Rwy 16, 34	Rwy 7 ldg 10,599'
			Rwy 25 ldg 10,599'

HI-TACAN RWY 7

EC-2, 20 MAR 2025 to 17 APR 2025

EC-2, 20 MAR 2025 to 17 APR 2025