

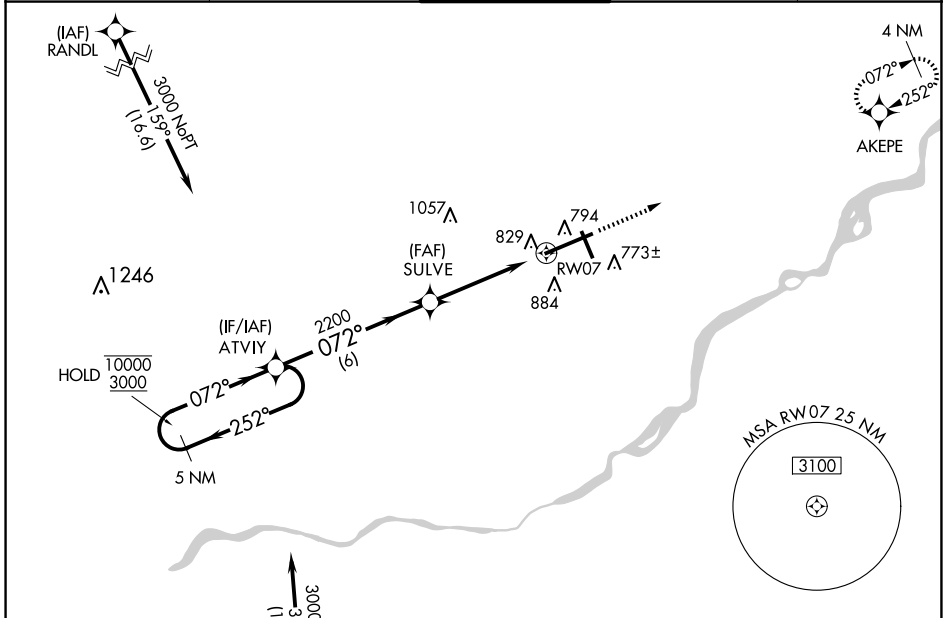
WAAS CH <b>99399</b> <b>W07A</b>	APP CRS <b>072°</b>	Rwy Idg TDZE Apt Elev	<b>10599</b> <b>683</b> <b>683</b>
--	------------------------	-----------------------------	--

# RNAV (GPS) RWY 7

EUGENE F KRANZ TOLEDO EXPRESS (TOL)

RNP APCH.	ALSF-2	MISSED APPROACH: Climb to 3000 direct AKEPE and hold.
<p><b>T</b> For uncompensated Baro-VNAV systems, LNAV/VNAV NA below -17°C or above 52°C.</p> <p><b>A</b> For inop ALS, increase LPV all Cats visibility to RVR 5000. Increase LNAV/VNAV Cat E and LNAV Cat E visibility to 1½ SM.</p> <p>ASR</p>		

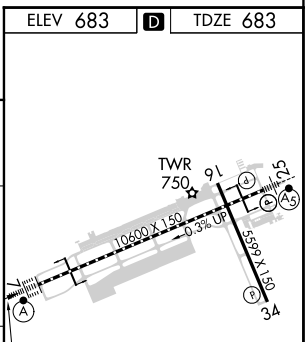
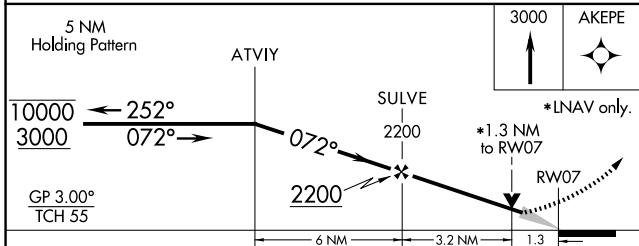
ATIS <b>118.75 290.225</b>	TOLEDO APP CON <b>134.35 317.55</b>	TOLEDO TOWER <b>118.1 285.4</b>	GND CON <b>121.9 348.6</b>	CLNC DEL <b>121.75 348.6</b>
-------------------------------	--	------------------------------------	-------------------------------	---------------------------------



EC-2, 20 MAR 2025 to 17 APR 2025

EC-2, 20 MAR 2025 to 17 APR 2025

ELEV 683	<b>D</b>	TDZE 683
----------	----------	----------



CATEGORY	A	B	C	D	E
LPV DA		1018/40	335 (400-¾)		
LNAV/VNAV DA		1129/50	446 (500-1)		
LNAV MDA	1140/24	457 (500-½)	1140/40 457 (500-¾)	1140/50	457 (500-1)
<b>C</b> CIRCLING	1200-1	517 (600-1)	1300-1¾ 617 (700-1¾)	1360-2¼ 677 (700-2¼)	1360-2½ 677 (700-2½)

TDZ/CL Rwy 7  
HIRL Rwy 7-25  
MIRL Rwy 16-34  
REIL Rwy 16 and 34