

LOC I-HLN	APP CRS	Rwy Idg	9000
110.1	271°	TDZE	3852
		Apt Elev	3877


ILS Y or LOC Y RWY 27

HELENA RGNL (HLN)

ADF or RADAR required for procedure entry. ADF or DME required.

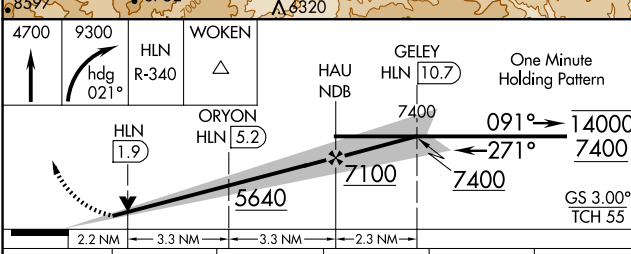
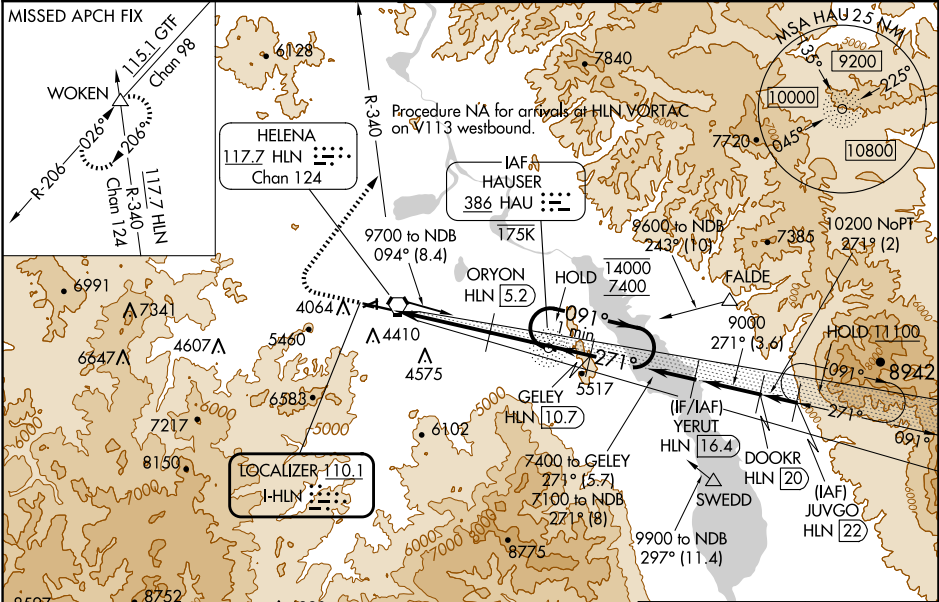
⚠ Circling NA to Rwy 5, 23, 35 NA at night. Inop table does not apply to S-LOC 27 all Cats. For inop ALS, increase S-ILS 27 all Cats visibility to 1½ SM, ORYON fix minimums: S-LOC 27 Cat C/D/E visibility to 2 SM. Holding at HAU NDB authorized for Cat A and B aircraft only. Circling NA for Cats D and E south of Rwy 9-27.
 *DME from HLN VORTAC. DME use requires simultaneous reception of I-HLN and HLN DME.

MALSRL



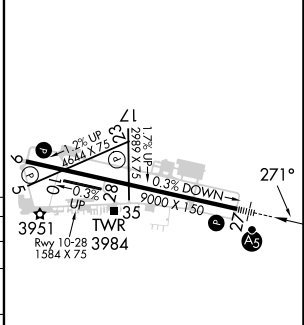
MISSED APPROACH: Climb to 4700 then climbing right turn to 9300 on heading 021° and on HLN VORTAC R-340 to WOKEN INT and hold, continue climb-in-hold to 9300.

ATIS 120.4	HELENA APP CON * 119.5 229.4	HELENA TOWER * 118.3 (CTAF) 0 257.8	GND CON 121.9	UNICOM 122.95
----------------------	--	---	-------------------------	-------------------------



ELEV	3877	TDZE	3852
------	-------------	------	-------------

CATEGORY	S-ILS 27			
	4496-1½ 644 (700-1½)			
S-LOC 27	5640-1¼ 1788 (1800-1¼)	5640-1½ 1788 (1800-1½)	5640-3 1788 (1800-3)	
CIRCLING	5640-1¼ 1763 (1800-1¼)	5640-1½ 1763 (1800-1½)	6000-3 2123 (2200-3)	
ORYON FIX MINIMUMS*				
S-LOC 27	4600-½ 748 (800-½)	4600-¾ 748 (800-¾)	4600-1¾ 748 (800-1¾)	
CIRCLING	4640-1 763 (800-1)	4800-1¼ 923 (1000-1¼)	6000-3 2123 (2200-3)	



REIL Rwys 9, 17 and 35	
MIRL Rwys 5-23 and 17-35	
HIRL Rwy 9-27	
FAF to MAP 8.7 NM	
Knots	60 90 120 150 180
Min:Sec	8:42 5:48 4:21 3:29 2:54

NW-1, 20 MAR 2025 to 17 APR 2025

NW-1, 20 MAR 2025 to 17 APR 2025