

APP CRS <b>091°</b>	Rwy Idg TDZE Apt Elev	<b>9000</b> <b>3864</b> <b>3877</b>
------------------------	-----------------------------	---

# RNAV (RNP) Z RWY 9

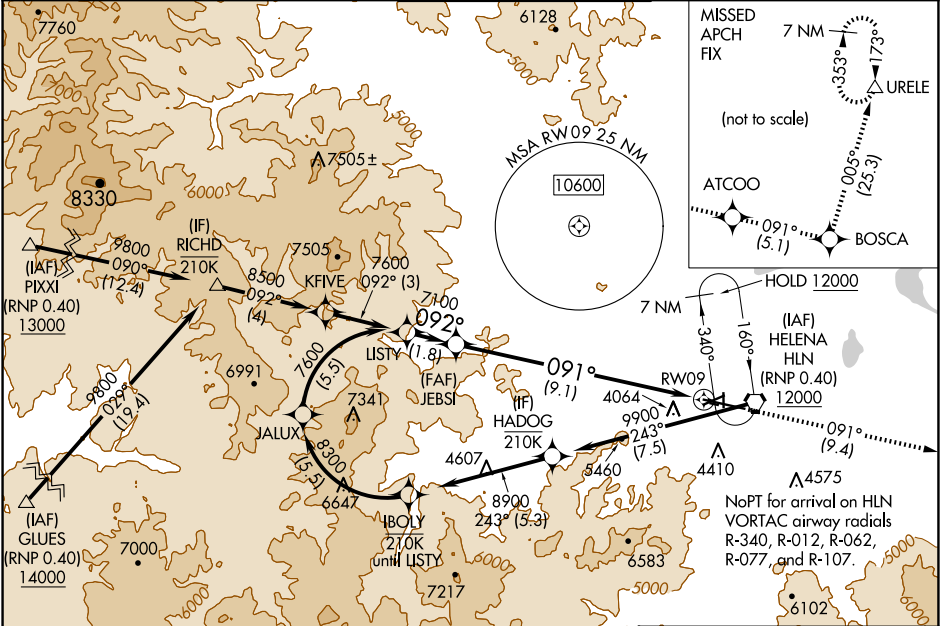
HELENA RGNL (HLN)

RNP AR APCH - GPS.

**▽**  
**☼** -17°C For uncompensated Baro-VNAV systems, procedure NA below -28°C or above 54°C.

MISSED APPROACH: Climb to 12000 on track 091° to ATCOO and on track 091° to BOSCA and on track 005° to URELE and hold.

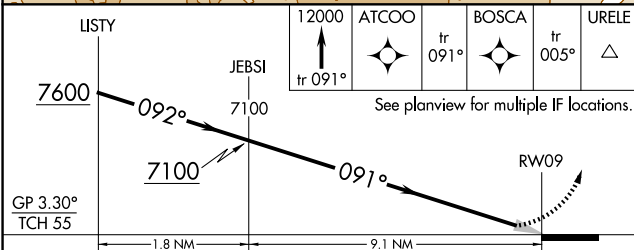
ATIS <b>120.4</b>	HELENA APP CON * <b>119.5 229.4</b>	HELENA TOWER * <b>118.3 (CTAF) 0 257.8</b>	GND CON <b>121.9</b>	UNICOM <b>122.95</b>
----------------------	--	---	-------------------------	-------------------------



NW-1, 20 MAR 2025 to 17 APR 2025

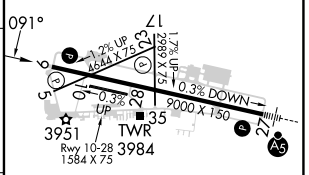
NW-1, 20 MAR 2025 to 17 APR 2025

ELEV 3877	TDZE 3864
-----------	-----------



CATEGORY	A	B	C	D
RNP 0.11 DA		4224-1	360 (400-1)	
RNP 0.17 DA		4296-1¼	432 (500-1¼)	
RNP 0.30 DA		4489-1¾	625 (700-1¾)	

**AUTHORIZATION REQUIRED**



REIL Rwy 9, 17, and 35  
MIRL Rwy 5-23 and 17-35  
HIRL Rwy 9-27