

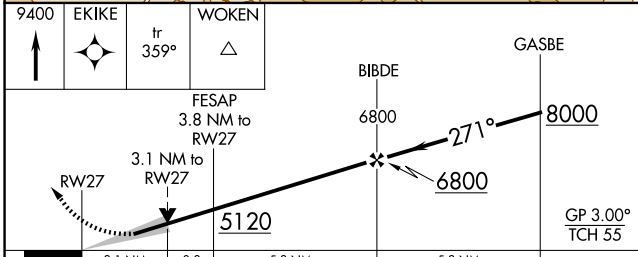
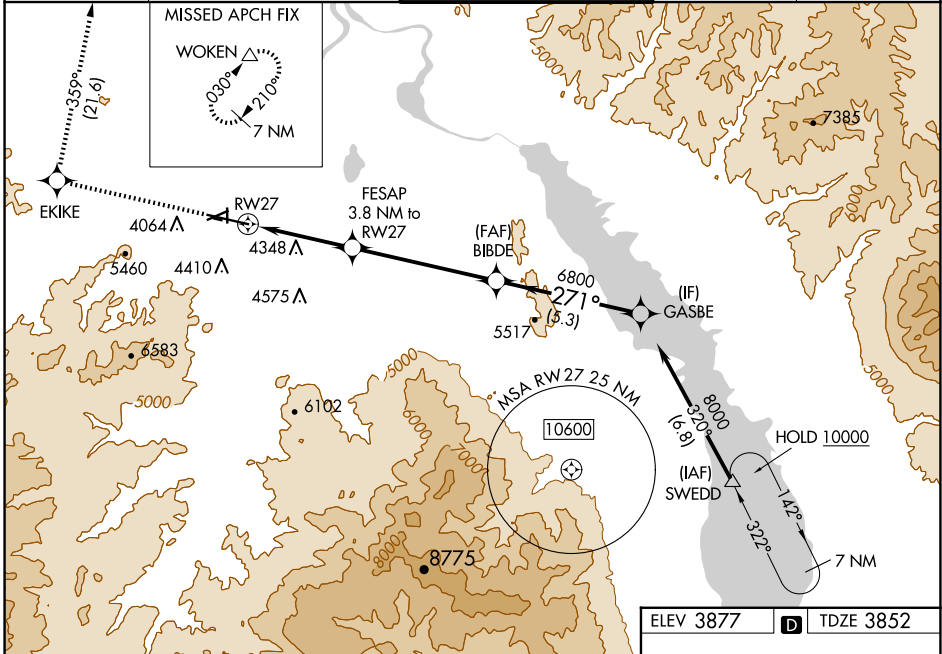
WAAS CH <b>69405</b> <b>W27A</b>	APP CRS <b>271°</b>	Rwy Idg TDZE Apt Elev	<b>9000</b> <b>3852</b> <b>3877</b>
--	------------------------	-----------------------------	---

# RNAV (GPS) X RWY 27

HELENA RGNL (HLN)

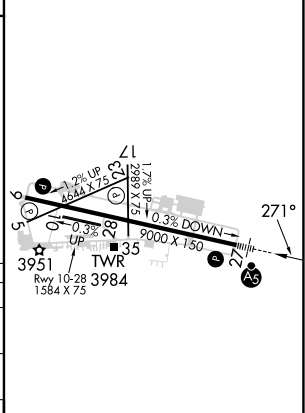
RNP APCH - GPS.	MALS R	MISSED APPROACH: Climb to 9400 direct EKIKE and on track 359° to WOKEN and hold.
<p>Circling NA to Rws 10 and 28. For uncompensated Baro-VNAV systems, LNAV/VNAV NA below -26°C or above 54°C. Circling Rwy 5, 23, 35 NA at night. For inop ALS, increase LPV all Cats visibility to 1/2 SM. Circling NA for Cat D south of Rwy 9-27.</p>		

ATIS <b>120.4</b>	HELENA APP CON * <b>119.5 229.4</b>	HELENA TOWER * <b>118.3 (CTAF) 257.8</b>	GND CON <b>121.9</b>	UNICOM <b>122.95</b>
----------------------	--	---	-------------------------	-------------------------



CATEGORY	A	B	C	D
LPV DA	4501-1 <sup>3</sup> / <sub>8</sub>		649 (700-1 <sup>3</sup> / <sub>8</sub> )	
LNAV/VNAV DA	4724-2		872 (900-2)	
LNAV MDA	4880- <sup>3</sup> / <sub>4</sub> 1028 (1100- <sup>3</sup> / <sub>4</sub> )	4880-1 1028 (1100-1)	4880-2 <sup>1</sup> / <sub>2</sub>	1028 (1100-2 <sup>1</sup> / <sub>2</sub> )
CIRCLING	4880-1 <sup>1</sup> / <sub>4</sub> 1003 (1100-1 <sup>1</sup> / <sub>4</sub> )	4880-1 <sup>1</sup> / <sub>2</sub> 1003 (1100-1 <sup>1</sup> / <sub>2</sub> )	6000-3	2123 (2200-3)

ELEV 3877	TDZE 3852
-----------	-----------



REIL Rws 9, 17, and 35  
MIRL Rws 5-23 and 17-35  
HIRL Rwy 9-27

NW-1, 20 MAR 2025 to 17 APR 2025

NW-1, 20 MAR 2025 to 17 APR 2025