

(SIEBE4.SIEBE) 23334

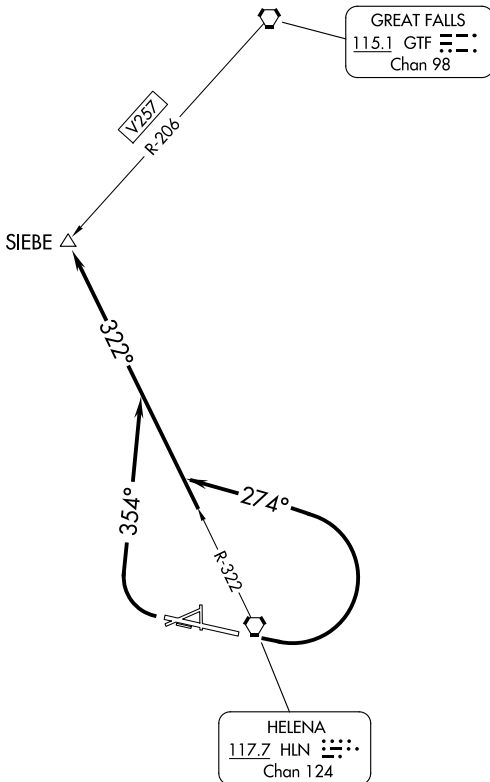
SIEBE FOUR DEPARTURE

AL-192 (FAA)

HELENA RGNL (HLN)
HELENA, MONTANA

HELENA DEP CON ★
119.5 229.4
SALT LAKE CENTER
133.4 285.4
ATIS
120.4
GND CON
121.9
HELENA TOWER ★
118.3 257.8

**TOP ALTITUDE:
ASSIGNED BY ATC**



TAKEOFF MINIMUMS

Rwy 5: NA - ATC.
Rwys 10, 17, 23, 28, 35: NA - Environmental.
Rwy 9: Standard with minimum climb of 270' per NM to 9000.
Rwy 27: Standard with minimum climb of 390' per NM to 7200.

NOTE: Chart not to scale.

DEPARTURE ROUTE DESCRIPTION

TAKEOFF RUNWAY 9: Climbing left turn to heading 274°, thence. . . .

TAKEOFF RUNWAY 27: Climbing right turn to heading 354°, thence. . . .

. . . . intercept HLN R-322 to SIEBE INT. Maintain ATC assigned altitude.

SIEBE FOUR DEPARTURE

(SIEBE4.SIEBE) 23FEB23

HELENA, MONTANA
HELENA RGNL (HLN)

NW-1, 20 MAR 2025 to 17 APR 2025

NW-1, 20 MAR 2025 to 17 APR 2025