

# HI-TACAN RWY 17R

TACAN Chan <b>31</b>	APCH CRS <b>163°</b>	Rwy ldg TDZE Arprt Elev	<b>9001</b> <b>32</b> <b>33</b>
-------------------------	-------------------------	-------------------------------	---------------------------------------

AL-197 [USAF]

ELLINGTON (KEFD)

RADAR required for procedure entry.

**MALSF** (A4)

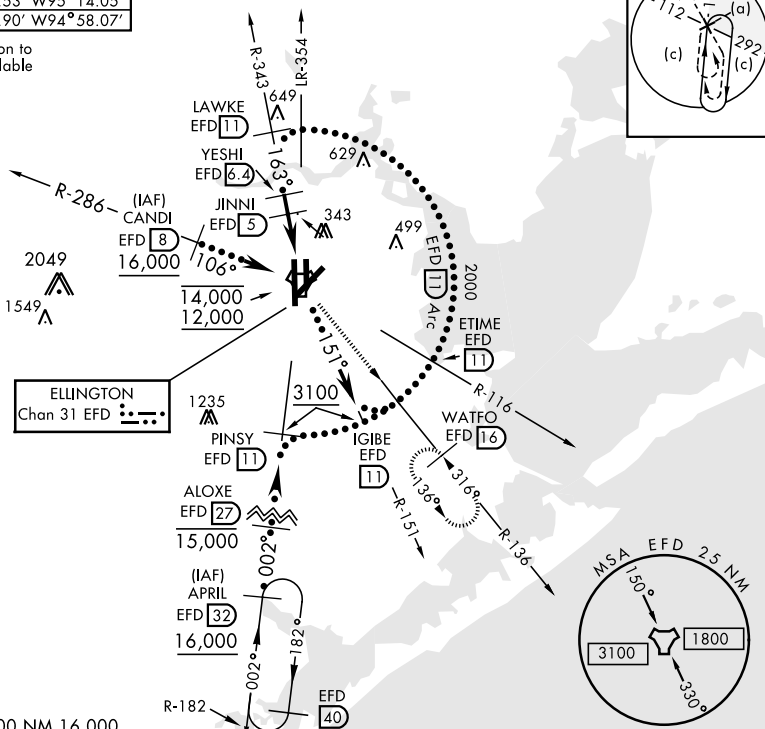
**MISSED APPROACH:** Climbing left turn to 3100 on EFD TACAN R-136 to WATFO/EFD 16 DME and hold.

\* When ALS inop, increase CAT CDE vis to 1 1/2 miles.  
\*\* Circling not authorized W of Rwy 17R-35L.

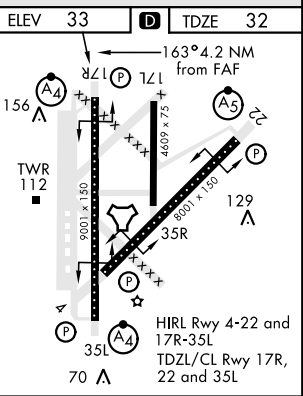
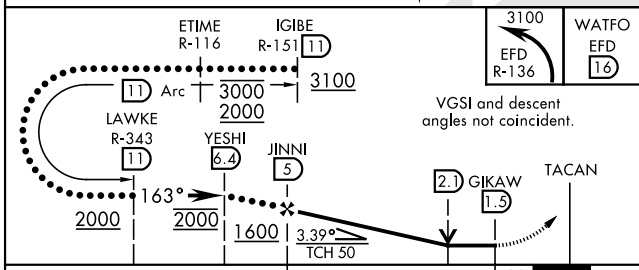
<b>ATIS</b> <b>135.575 269.9</b>	<b>HOUSTON APP CON</b> <b>134.45 284.0</b>	<b>TOWER</b> <b>126.05 253.5</b>	<b>GND CON</b> <b>121.6 275.8</b>
-------------------------------------	---	-------------------------------------	--------------------------------------

EFD TACAN	N29°36.36' W95°09.58'
CANDI	N29°39.24' W95°18.17'
APRIL	N29°04.53' W95°14.05'
WATFO	N29°23.90' W94°58.07'

Enroute penetration to 11 DME Arc available



EMERG SAFE ALT 100 NM 16,000



CATEGORY	C	D	E
S-17R *	500/60	468	(500-1 1/2)
CIRCLING **	580-1 1/2 547 (600-1 1/2)	640-2 607 (700-2)	700-2 1/4 667 (700-2 1/4)

# HI-TACAN RWY 17R

SC-5, 20 MAR 2025 to 17 APR 2025

SC-5, 20 MAR 2025 to 17 APR 2025