


TACAN EFD Chan 31 (109.4)	APP CRS 226°	Rwy Idg 8001 TDZE 31 Apt Elev 33
--	------------------------	---

TACAN RWY 22

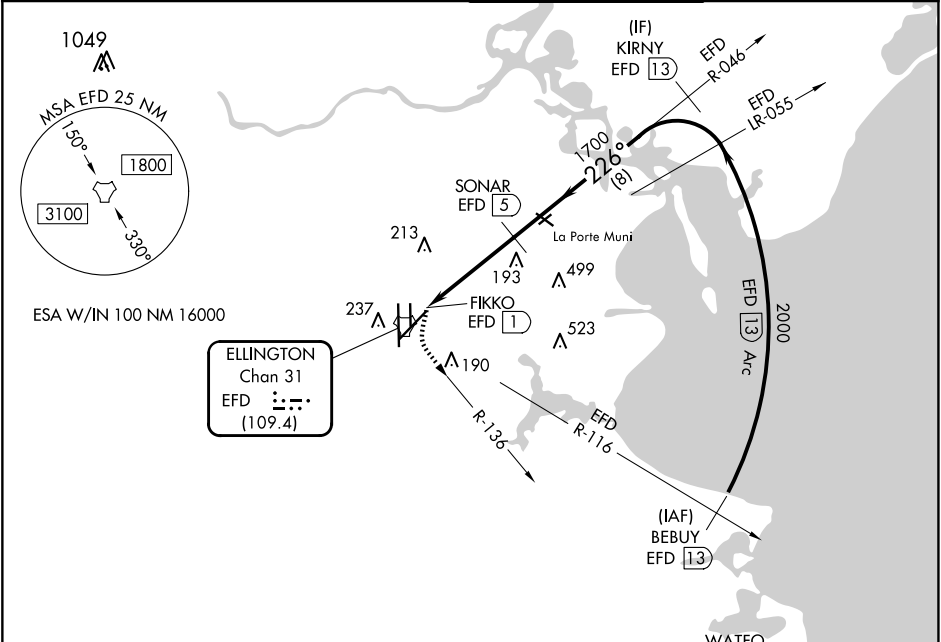
ELLINGTON (EFD)

∇ Circling NA west of Rwy 17R-35L. When ALS inop, increase S-22
△ NA Cat A/B visibility to RVR 5500 and Cat C/D/E to 1 3/8 miles.

MALSR 

MISSED APPROACH: Climbing left turn to 3100 on EFD TACAN R-136 to WATFO/EFD 16 DME and hold.

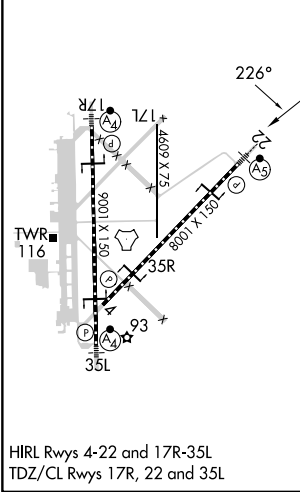
ATIS 135.575 269.9	HOUSTON APP CON 134.45 284.0	ELLINGTON TOWER 126.05 253.5	GND CON 121.6 275.8
------------------------------	--	--	-------------------------------



SC-5, 20 MAR 2025 to 17 APR 2025

SC-5, 20 MAR 2025 to 17 APR 2025

ELEV 33	D	TDZE 31
---------	----------	---------



RADAR REQUIRED

3100 EFD R-136 WATFO EFD 16 VGSI and descent angles not coincident (VGSI Angle 3.00/TCH 50).
 Cat D/E VDA not for civil use.

KIRNY EFD 13

SONAR EFD 5

2000

1700

226°

3.69° TCH 55

FIKKO EFD 1

EFD 2.2

0.2 1.2 2.7 NM 8 NM

CATEGORY	A	B	C	D	E
S-22	500/24	469 (500-1/2)	500/50	469 (500-1)	
C CIRCLING	500-1	467 (500-1)	580-1 1/2 547 (600-1 1/2)	640-2 607 (700-2)	700-2 1/4 667 (700-2 1/4)