

RNAV 1- DME/DME/IRU or GPS.
RADAR required.

(KIDDDZ.KIDDDZ5) 24305

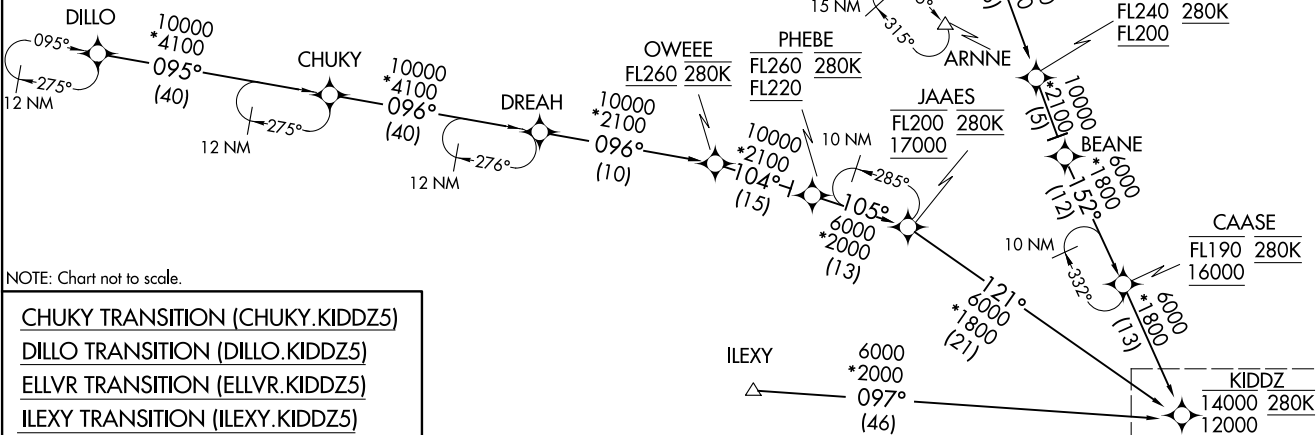
AL-198 (FAA)

HOUSTON, TEXAS

- NOTE: For jet aircraft capable of 280K or greater only.
- NOTE: ILEXY Transition for Austin terminal area departures only.
- NOTE: Landing HOU expect runway assignment from Houston TRACON on initial contact.
- NOTE: Jet aircraft descend via mach number until 280K, if unable, advise ATC.
- NOTE: CHUKY Transition: Do not file - to be assigned by ATC.



HOUSTON APP CON
119.175 291.675
EFD ATIS
135.575 269.9
HOU D-ATIS
124.6



NOTE: Chart not to scale.

- CHUKY TRANSITION (CHUKY.KIDDDZ5)
- DILLO TRANSITION (DILLO.KIDDDZ5)
- ELLVR TRANSITION (ELLVR.KIDDDZ5)
- ILEXY TRANSITION (ILEXY.KIDDDZ5)
- NNEAL TRANSITION (NNEAL.KIDDDZ5)

(CONTINUED ON FOLLOWING PAGE)

See following page for arrival routes.

(KIDDDZ.KIDDDZ5) 31OCT24

KIDDDZ FIVE ARRIVAL (RNAV) Transition Routes

HOUSTON, TEXAS

KIDDDZ FIVE ARRIVAL (RNAV) Transition Routes

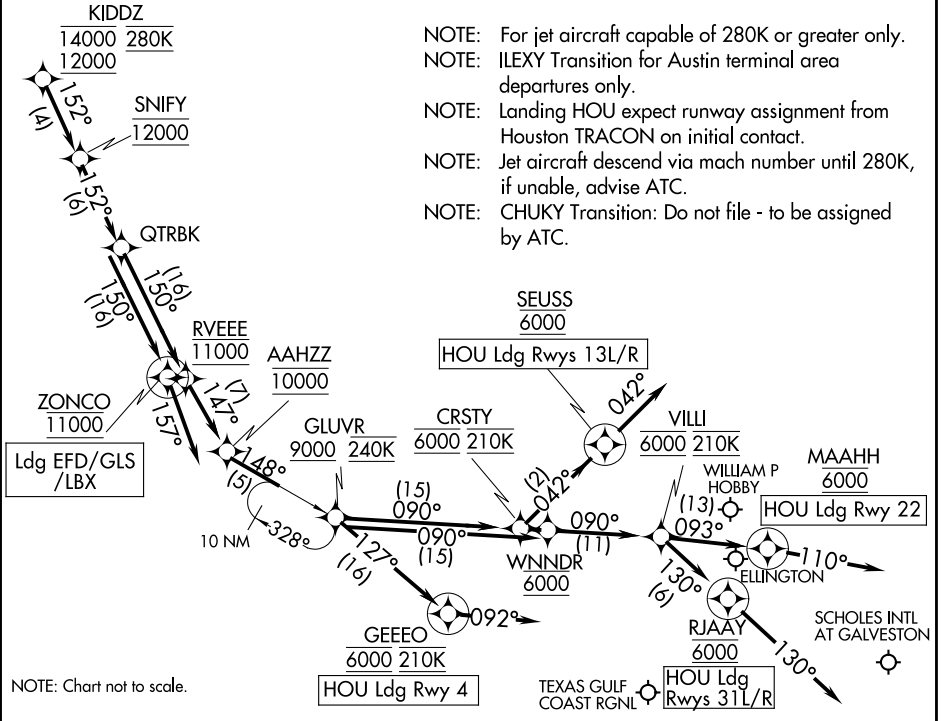
KIDZ FIVE ARRIVAL (RNAV) Arrival Routes

HOUSTON, TEXAS

HOUSTON APP CON
119.175 291.675
EFD ATIS
135.575 269.9
HOU D-ATIS
124.6

RNAV 1- DME/DME/IRU or GPS.
RADAR required.

- NOTE: For jet aircraft capable of 280K or greater only.
- NOTE: ILEXY Transition for Austin terminal area departures only.
- NOTE: Landing HOU expect runway assignment from Houston TRACON on initial contact.
- NOTE: Jet aircraft descend via mach number until 280K, if unable, advise ATC.
- NOTE: CHUKY Transition: Do not file - to be assigned by ATC.



NOTE: Chart not to scale.

ARRIVAL ROUTE DESCRIPTION

HOU: From KIDZ on track 152° to cross SNIFY at 12000, then on track 152° to QTRBK, then on track 150° to cross RVEEE at 11000, then on track 147° to cross AAHZZ at 10000, then on track 148° to cross GLUVR at or above 9000 and at 240K.

LANDING HOU RUNWAY 4: From GLUVR on track 127° to cross GEEEO at 6000 and at 210K, then on track 092°. Expect ILS or LOC Rwy 04 approach or RADAR vectors to final approach course.

LANDING HOU RUNWAYS 13L/R: From GLUVR on track 090° to cross CRSTY at 6000 and at 210K, then on track 042° to cross SEUSS at 6000, then on track 042°. Expect RADAR vectors to final approach course.

LANDING HOU RUNWAY 22: From GLUVR on track 090° to cross WNNDR at 6000, then on track 090° to cross VILLI at 6000 and at 210K, then on track 093° to cross MAAHH at 6000, then on track 110°. Expect RADAR vectors to final approach course.

LANDING HOU RUNWAYS 31L/R: From GLUVR on track 090° to cross WNNDR at 6000, then on track 090° to cross VILLI at 6000 and at 210K, then on track 130° to RJAAY at 6000, then on track 130°. Expect RADAR vectors to final approach course.

LANDING GLS/LBX/EFD: From KIDZ on track 152° to cross SNIFY at 12000, then on track 152° to QTRBK, then on track 150° to cross ZONCO at 11000, then on track 157°. Expect RADAR vectors to final approach course.

SC-5, 20 MAR 2025 to 17 APR 2025

SC-5, 20 MAR 2025 to 17 APR 2025