

RADAR and DME required.

TOP ALTITUDE:
16000

TAKEOFF MINIMUMS

Rwys 4, 13L/R, 31L/R: Standard.
Rwy 22: Standard with minimum climb
of 290' per NM to 1500.



D-ATIS
124.6
CLNIC DEL
125.45
CPDLC
GND CON
121.9
HOBBY TOWER
118.7 256.9
HOUSTON DEP CON
127.125 269.075

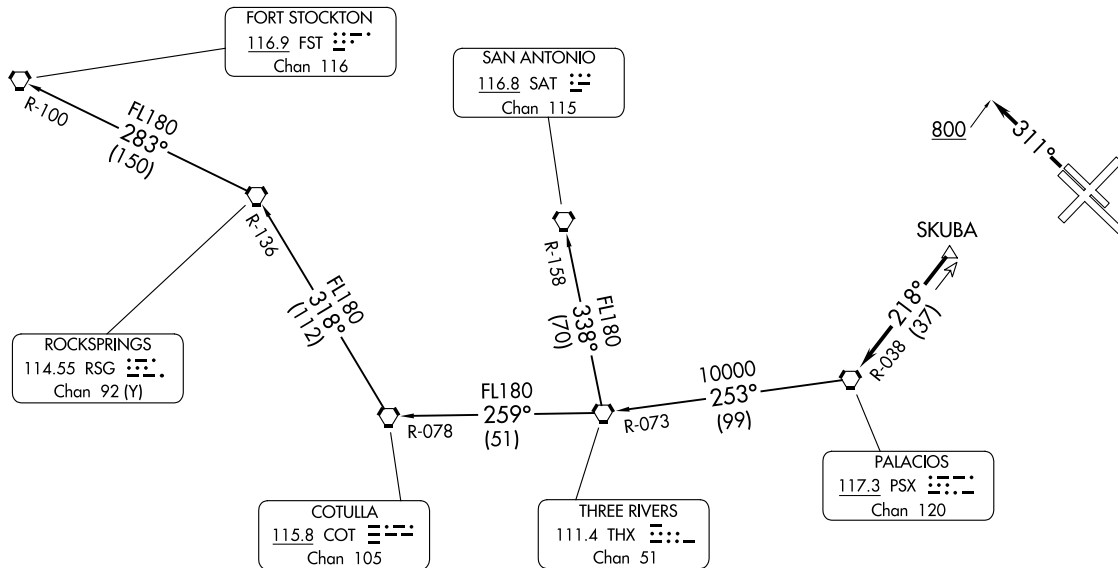
PALACIOS THREE DEPARTURE

(PSX3, PSX) 03NOV22

PALACIOS THREE DEPARTURE

A-I-198 (FAA)

WILLIAM P HOBBY (HOT)
HOUSTON, TEXAS



(CONTINUED ON FOLLOWING PAGE)

NOTE: Chart not to scale.

WILLIAM P HOBBY (HOT)
HOUSTON, TEXAS



DEPARTURE ROUTE DESCRIPTION

TAKEOFF RUNWAYS 4, 13L/R, 22: Climb on assigned heading for RADAR vectors to SKUBA, maintain 16000. Expect filed altitude 10 minutes after departure, thence

TAKEOFF RUNWAYS 31L/R: Climb on heading 311° to 800 before turning, then climb on assigned heading for RADAR vectors to SKUBA, maintain 16000. Expect filed altitude 10 minutes after departure, thence

. . . . on PSX R-038 to PSX VORTAC.

FORT STOCKTON TRANSITION (PSX3.FST): From over PSX VORTAC on PSX R-253 and THX R-073 to THX VORTAC, then on THX R-259 and COT R-078 to COT VORTAC, then on COT R-318 and RSG R-136 to RSG VORTAC, then on RSG R-283 and FST R-100 to FST VORTAC.

SAN ANTONIO TRANSITION (PSX3.SAT): From over PSX VORTAC on PSX R-253 and THX R-073 to THX VORTAC, then on SAT R-158 to SAT VORTAC.

SC-5, 20 MAR 2025 to 17 APR 2025

SC-5, 20 MAR 2025 to 17 APR 2025