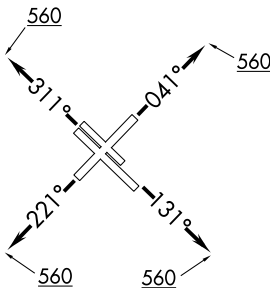


PEECE SIX DEPARTURE (RNAV)

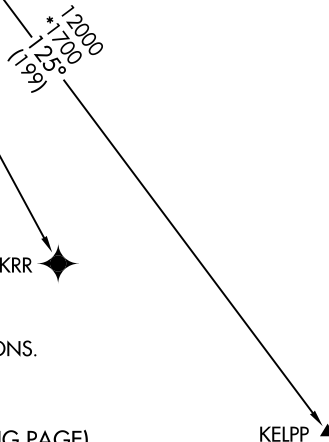
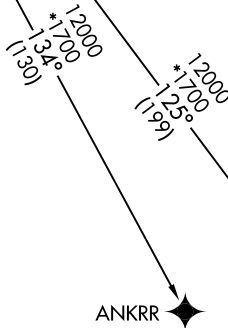
**TOP ALTITUDE:
16000**

D-ATIS
124.6
CLNC DEL
125.45
CPDLC
GND CON
121.9
HOBBY TOWER
118.7 256.9
HOUSTON DEP CON
127.125 269.075



TAKEOFF MINIMUMS

Rwy 4: Standard with minimum climb of 500' per NM to 3800.
 Rwy 13L: Standard with minimum climb of 500' per NM to 4200.
 Rwy 13R: Standard with minimum climb of 500' per NM to 4400.
 Rwy 22: Standard with minimum climb of 500' per NM to 3900.
 Rws 31L/R: Standard with minimum climb of 500' per NM to 3300.



- NOTE: DME/DME/IRU or GPS required.
- NOTE: RADAR required.
- NOTE: RNAV 1.
- NOTE: GPS required for ANKRR, KELPP, and MUSYL TRANSITIONS.

NOTE: Chart not to scale.

(NARRATIVE ON FOLLOWING PAGE)

SC-5, 20 MAR 2025 to 17 APR 2025

SC-5, 20 MAR 2025 to 17 APR 2025

PEECE SIX DEPARTURE (RNAV)



DEPARTURE ROUTE DESCRIPTION

TAKEOFF RUNWAY 4: Climb on heading 041° to 560, expect RADAR vectors to PEECE, thence. . . .

TAKEOFF RUNWAYS 13L/R: Climb on heading 131° to 560, expect RADAR vectors to PEECE, thence. . . .

TAKEOFF RUNWAY 22: Climb on heading 221° to 560, expect RADAR vectors to PEECE, thence. . . .

TAKEOFF RUNWAYS 31L/R: Climb on heading 311° to 560, expect RADAR vectors to PEECE, thence. . . .

. . . .on track 131° to VUH VOR/DME, then on (transition). Maintain 16000, expect filed altitude 10 minutes after departure.

ANKRR TRANSITION (PEECE6.ANKRR)

KELPP TRANSITION (PEECE6.KELPP)

MUSYL TRANSITION (PEECE6.MUSYL)

SC-5, 20 MAR 2025 to 17 APR 2025

SC-5, 20 MAR 2025 to 17 APR 2025