

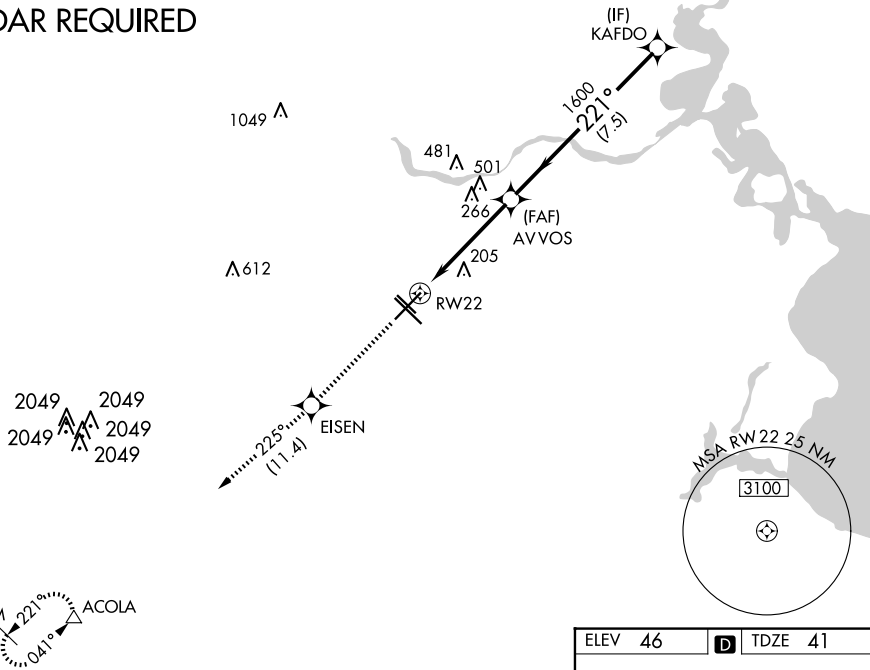
WAAS CH 65610 W22A	APP CRS 221°	Rwy Idg 7602 TDZE 41 Apt Elev 46
--	------------------------	---

RNAV (GPS) RWY 22

WILLIAM P HOBBY (HOU)

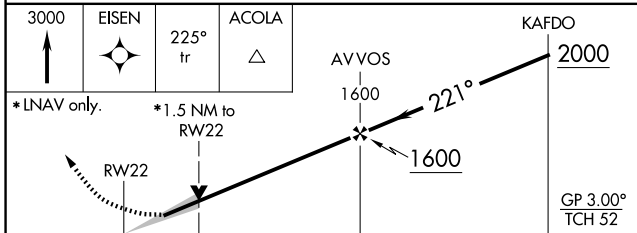
RNP APCH		MALS	MISSED APPROACH: Climb to 3000 direct EISEN and on track 225° to ACOLA and hold.		
<p>▼ Inop table does not apply to LPV, LNAV/VNAV all Cats, and LNAV Cat C. For uncompensated Baro-VNAV systems, LNAV/VNAV NA below -15°C (5°F) or above 48°C (118°F).</p>		<p>(A) </p>			
D-ATIS 124.6	HOUSTON APP CON 120.05 379.1 EAST 124.35 316.15 WEST	HOBBY TOWER 118.7 256.9	GND CON 121.9	CLNC DEL 125.45	CPDLC

RADAR REQUIRED

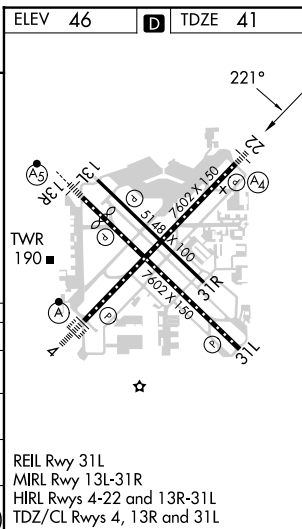


SC-5, 20 MAR 2025 to 17 APR 2025

SC-5, 20 MAR 2025 to 17 APR 2025



ELEV 46	D TDZE 41				
3000	EISEN	225° tr	ACOLA	KAFDO	
*LNAV only.	*1.5 NM to RW22				
RW22	1600	221°	2000		
	1600			GP 3.00° TCH 52	
CATEGORY	A	B	C	D	E
LPV DA	360-1		319 (400-1)		
LNAV/VNAV DA	480-1½		439 (500-1½)		
LNAV MDA	580-¾	539 (600-¾)	580-1½	580-1¾	580-2
C CIRCLING	580-1	534 (600-1)	580-1½	740-2¼	820-2¾
			534 (600-1½)	694 (700-2¼)	774 (800-2¾)



REIL Rwy 31L
MIRL Rwy 13L-31R
HIRL Rwys 4-22 and 13R-31L
TDZ/CL Rwys 4, 13R and 31L