

# INDY TWO DEPARTURE

AL-203 (FAA)

INDIANAPOLIS INTL (IND)  
INDIANAPOLIS, INDIANA

D-ATIS 134.25  
CLNC DEL  
128.75 251.1  
CPDLC  
GND CON  
121.9  
INDY TOWER  
120.9 251.1  
INDIANAPOLIS DEP CON  
124.95 317.8 (EAST)  
119.05 317.8 (WEST)

RADAR required.

**TOP ALTITUDE:**  
**(JETS) 5000**  
**(PROPS) 3000**

BOILER  
115.1 BVT  
Chan 98

MARION  
108.6 MZZ  
Chan 23

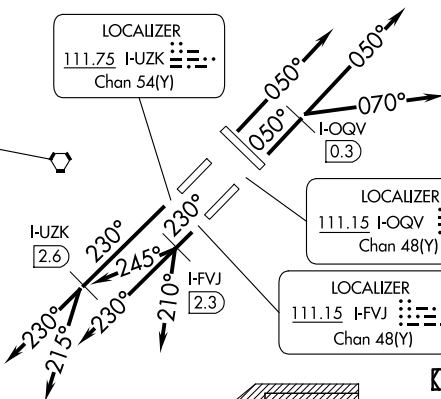
ROSEWOOD  
117.5 ROD  
Chan 122

CHAMPAIGN  
115.75 CMI  
Chan 104(Y)

LOCALIZER  
111.75 I-UZK  
Chan 54(Y)

BRICKYARD  
116.3 VHP  
Chan 110

TERRE HAUTE  
115.3 TTH  
Chan 100

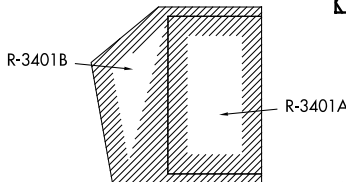


DAYTON  
114.5 DGN  
Chan 92

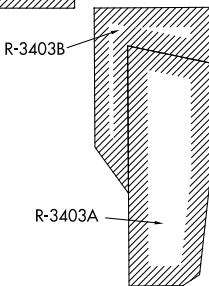
LOCALIZER  
111.15 I-OQV  
Chan 48(Y)

LOCALIZER  
111.15 I-FVJ  
Chan 48(Y)

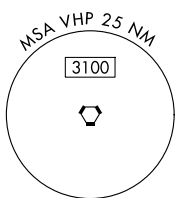
SHELBYVILLE  
116.15 SHB  
Chan 108 (Y)



HOOSIER  
110.2 OOM  
Chan 39



POCKET CITY  
113.3 PXV  
Chan 80



**TAKEOFF MINIMUMS:**

Rwy 5L/R, 14, 23L/R, 32: Standard.

NOTE: Select appropriate localizer/DME frequency/channel prior to departure.  
NOTE: Jet aircraft accelerate to 250K until reaching 10000. If unable advise ATC.

(CONTINUED ON FOLLOWING PAGE)

NOTE: Chart not to scale.

EC-2, 20 MAR 2025 to 17 APR 2025

EC-2, 20 MAR 2025 to 17 APR 2025



DEPARTURE ROUTE DESCRIPTION

TAKEOFF RUNWAY 5R (JETS ONLY-DME REQUIRED): Climb on heading 050° to I-OQV 0.3 DME, then on assigned heading 050° or 070°. Maintain 5000.

Thence . . . .

TAKEOFF RUNWAY 5L (JETS ONLY): Climb on heading 050°. Maintain 5000.

Thence . . . .

TAKEOFF RUNWAY 23R (JETS ONLY-DME REQUIRED): Climb on heading 230° to I-UZK 2.6 DME, then on assigned heading 230° or 215°. Maintain 5000.

Thence....

TAKEOFF RUNWAY 23L (JETS ONLY-DME REQUIRED): Climb on heading 230° to I-FVJ 2.3 DME, then on assigned heading 210°, 230°, or 245°. Maintain 5000.

Thence....

TAKEOFF ALL OTHER RUNWAYS (JETS ONLY): Climb on assigned heading.

Maintain 5000. Thence....

TAKEOFF ALL RUNWAYS (PROPS ONLY): Climb on assigned heading.

Maintain 3000. Thence....

....RADAR vectors to assigned route/fix. Expect clearance to filed altitude 10 minutes after departure.

EC-2, 20 MAR 2025 to 17 APR 2025

EC-2, 20 MAR 2025 to 17 APR 2025