

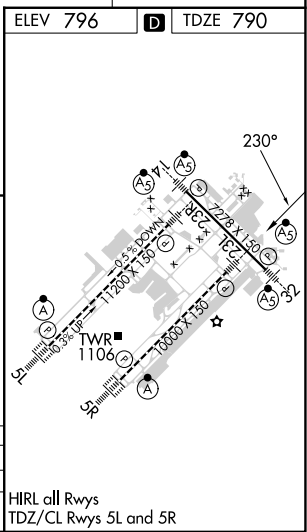
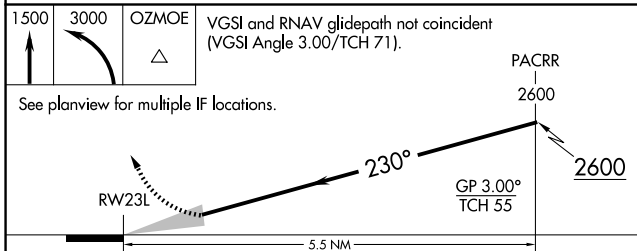
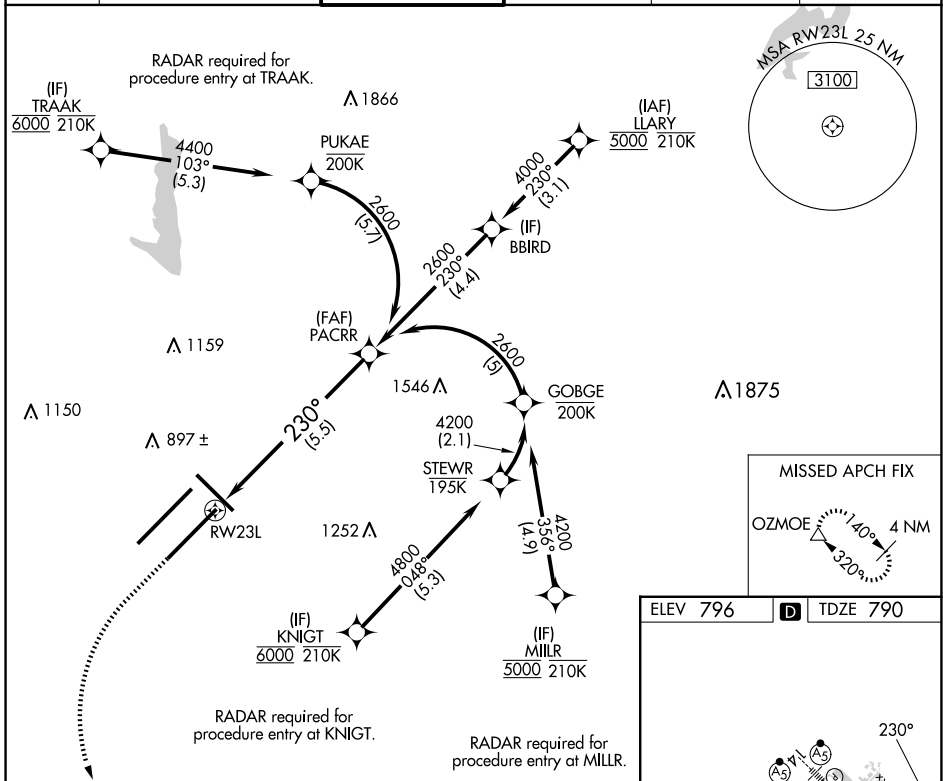
APP CRS	Rwy Idg	10000
230°	TDZE	790
	Apt Elev	796

RNAV (RNP) Z RWY 23L

INDIANAPOLIS INTL (IND)

RNP AR APCH - GPS.		MALSRL	MISSED APPROACH: Climb to 1500, then climbing left turn to 3000 direct OZMOE and hold.
For uncompensated Baro-VNAV systems, procedure NA below -20°C or above 54°C. Simultaneous approach authorized for arrivals from LLRY only.			

D-ATIS 134.25	INDIANAPOLIS APP CON 128.175 317.8	INDY TOWER 120.9 251.1	GND CON 121.9	CLNC DEL 128.75 251.1	CPDLC
-------------------------	--	----------------------------------	-------------------------	---------------------------------	-------



CATEGORY	A	B	C	D
RNP 0.30 DA	1175/35		385 (400-%)	

AUTHORIZATION REQUIRED

EC-2, 20 MAR 2025 to 17 APR 2025

EC-2, 20 MAR 2025 to 17 APR 2025