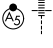


# RNAV (RNP) Z RWY 23R

INDIANAPOLIS INTL (IND)

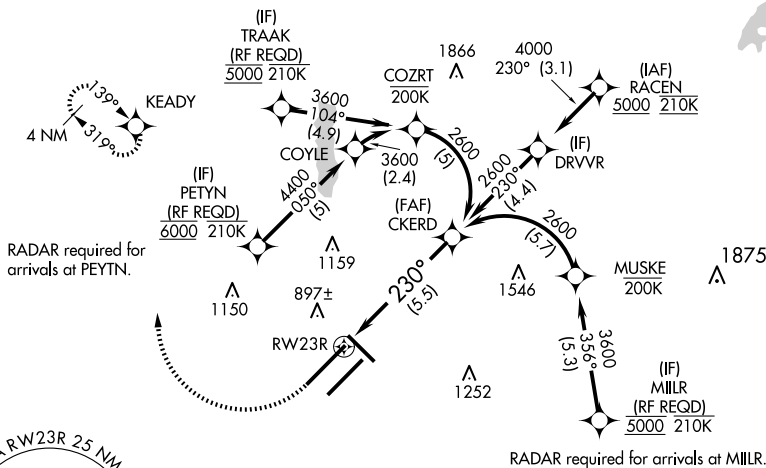
APP CRS <b>230°</b>	Rwy Idg <b>11200</b>
	TDZE <b>783</b>
	Apt Elev <b>796</b>

**▽** For uncompensated Baro-VNAV systems, procedure NA below -18°C (0°F) or above 54°C (130°F). GPS Required. For inoperative ALS, increase RNP 0.15 all Cats visibility to RVR 6000 and increase RNP 0.30 all Cats visibility to 1 3/8 SM. Simultaneous approach authorized.

**MALSR**  
  
**MISSED APPROACH:**  
 Climb to 1200 then climbing right turn to 3000 direct KEADY and hold.

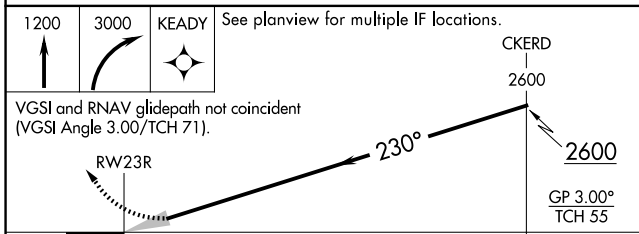
D-ATIS <b>134,25</b>	INDIANAPOLIS APP CON <b>128.175 317.8</b>	INDY TOWER <b>120.9 251.1</b>	GND CON <b>121.9</b>	CLNC DEL <b>128.75 251.1</b>	CPDLC
-------------------------	--	----------------------------------	-------------------------	---------------------------------	-------

RADAR required for arrivals at TRAAK.

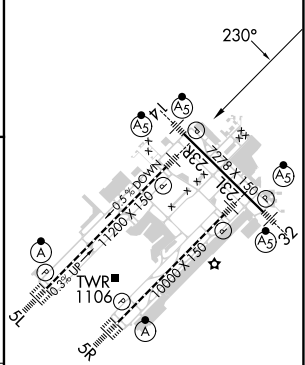


EC-2, 20 MAR 2025 to 17 APR 2025

EC-2, 20 MAR 2025 to 17 APR 2025



ELEV 796	<b>D</b> TDZE 783
----------	-------------------



CATEGORY	A	B	C	D
RNP 0.15 DA		1147/40	364 (400-3/4)	
RNP 0.30 DA		1206/50	423 (500-1)	

**AUTHORIZATION REQUIRED**

HIRL all Rwy's  
 TDZ/CL Rwy's 5L and 5R