

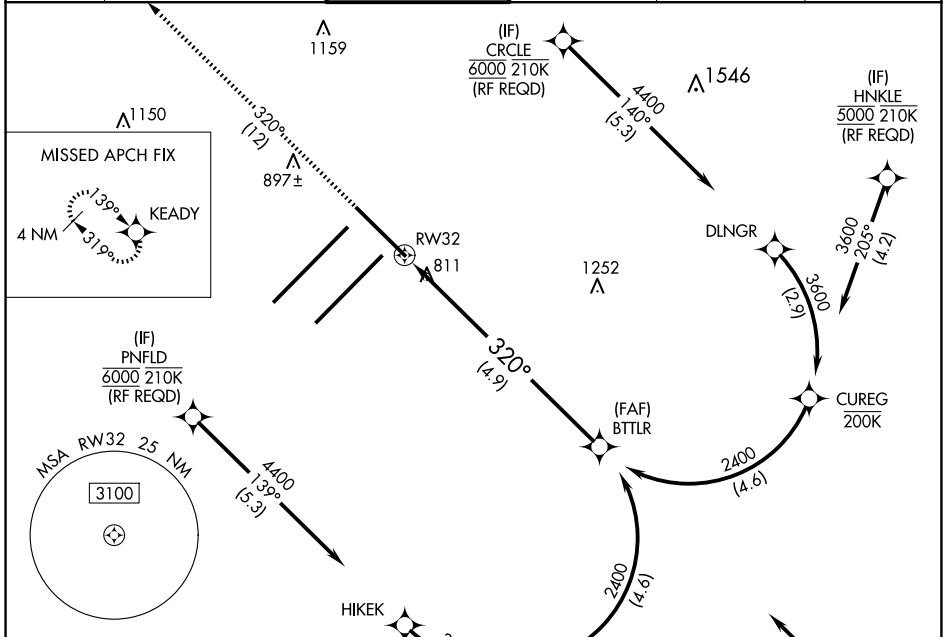
APP CRS 320°	Rwy Idg 7278
	TDZE 793
	Apt Elev 796

RNAV (RNP) Z RWY 32

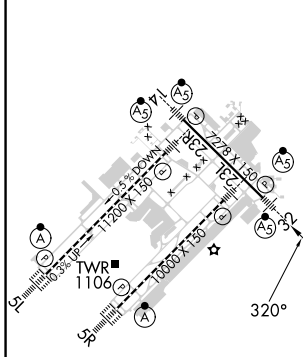
INDIANAPOLIS INTL (IND)

	For uncompensated Baro-VNAV systems, procedure NA below -18°C (2°F) or above 54°C (130°F). GPS required.	MALSR 	MISSED APPROACH: Climb to 3000 on track 320° to KEADY and hold.

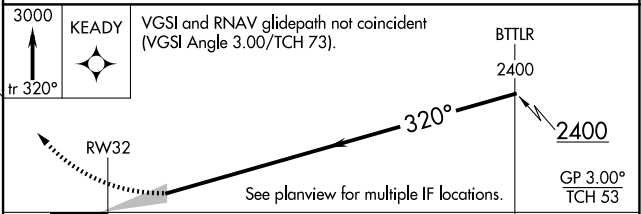
D-ATIS 134.25	INDIANAPOLIS APP CON 128.175 317.8	INDY TOWER 120.9 251.1	GND CON 121.9	CLNC DEL 128.75 251.1	CPDLC
-------------------------	--	----------------------------------	-------------------------	---------------------------------	-------



ELEV 796	D	TDZE 793
----------	----------	----------



KEADY 3000 Ir 320°	VGSi and RNAV glidepath not coincident (VGSi Angle 3.00/TCH 73).	BTTLR 2400 GP 3.00° TCH 53
--------------------------	---	-------------------------------------



CATEGORY	A	B	C	D
RNP 0.19 DA		1134/30	341 (400- ² / ₃)	
RNP 0.30 DA		1196/45	403 (400- ² / ₃)	

AUTHORIZATION REQUIRED

EC-2, 20 MAR 2025 to 17 APR 2025

EC-2, 20 MAR 2025 to 17 APR 2025