

APP CRS	Rwy Idg	10000
050°	TDZE	791
	Apt Elev	796

RNAV (RNP) Z RWY 5R

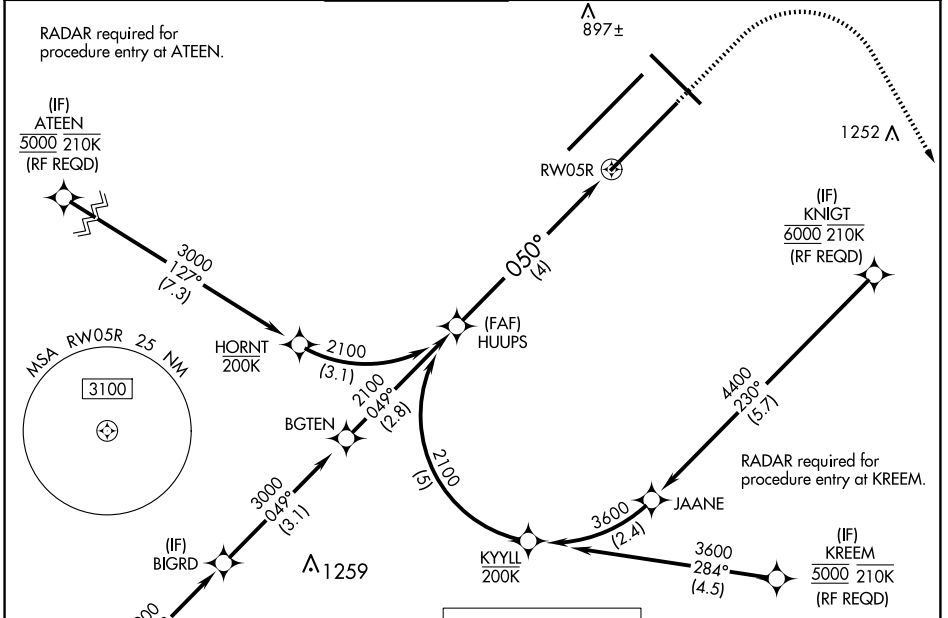
INDIANAPOLIS INTL (IND)

▼ For uncompensated Baro-VNAV systems, procedure NA below -18°C (0°F) or above 54°C (130°F). GPS required. Simultaneous approach authorized, for arrivals from IIUUU only.

ALSF-2

MISSED APPROACH: Climb to 1500, then climbing right turn to 3000 direct OZMOE and hold.

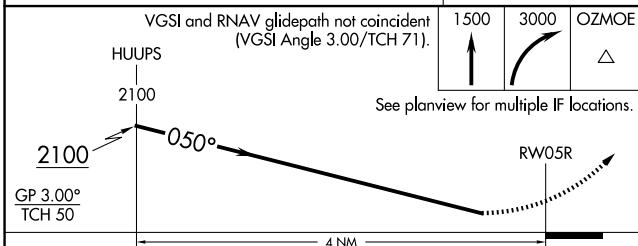
D-ATIS 134.25	INDIANAPOLIS APP CON 128.175 317.8	INDY TOWER 120.9 251.1	GND CON 121.9	CLNC DEL 128.75 251.1	CPDLC
-------------------------	----------------------------------------------	----------------------------------	-------------------------	---------------------------------	-------



EC-2, 20 MAR 2025 to 17 APR 2025

EC-2, 20 MAR 2025 to 17 APR 2025

MISSED APCH FIX	ELEV 796	D	TDZE 791
-----------------	----------	----------	----------



CATEGORY	A	B	C	D
RNP 0.11 DA		1174/45	383 (400- ² / ₃)	
RNP 0.30 DA		1271/60	480 (500-1 ¹ / ₄)	

AUTHORIZATION REQUIRED

