

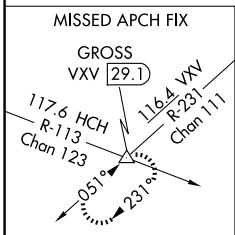
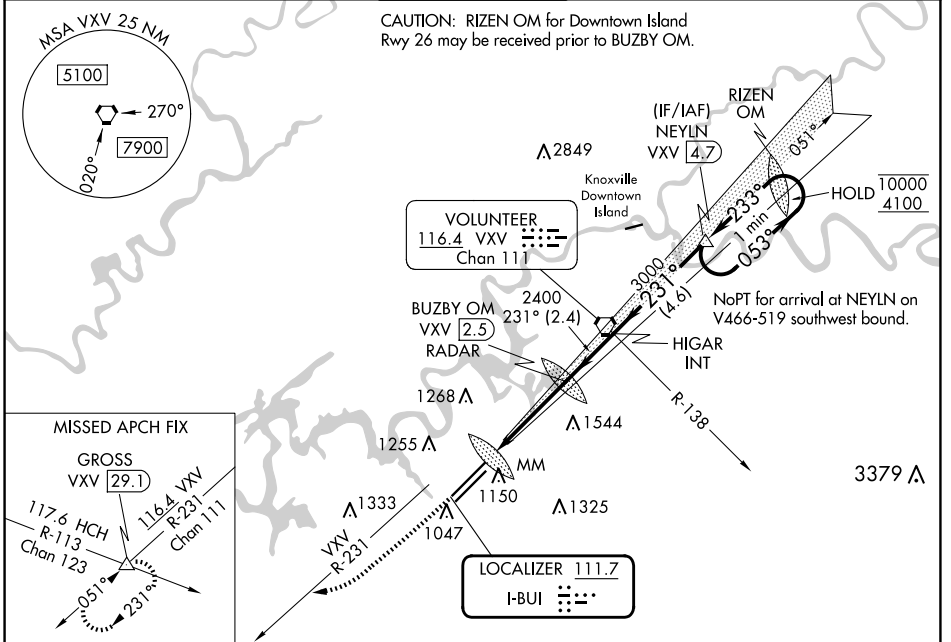
LOC I-BUI 111.7	APP CRS 231°	Rwy ldg TDZE Apt Elev	9495 984 986
---------------------------	------------------------	-----------------------------	---

ILS RWY 23R (SA CAT I)

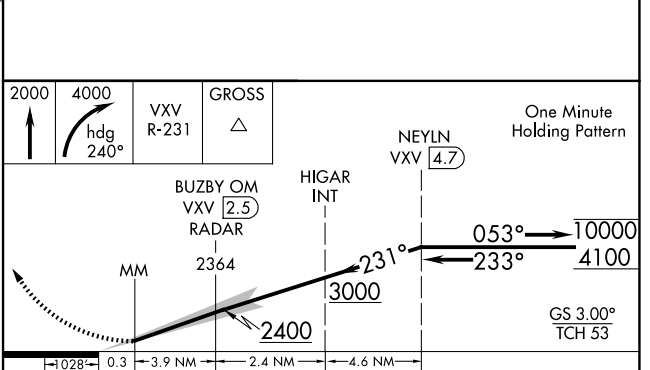
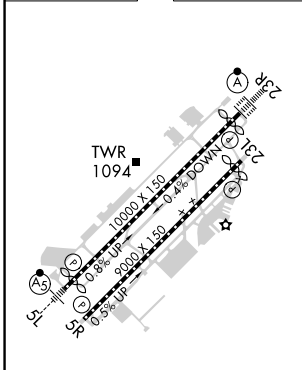
MC GHEE TYSON (TYS)

DME or RADAR required. Requires specific OPSEC, MSPEC, or LOA approval.		ALSF-2 	MISSED APPROACH: Climb to 2000 then climbing right turn to 4000 on heading 240° and VXV VORTAC R-231 to GROSS INT/VXV 29.1 DME and hold.	
--	--	------------	--	--

ATIS 128.35	KNOXVILLE APP CON 123.9 360.8	KNOXVILLE TOWER 121.2 257.8	GND CON 121.9 348.6	CLNC DEL 121.65
-----------------------	---	---------------------------------------	-------------------------------	---------------------------



ELEV 986	D	TDZE 984
----------	----------	----------



CATEGORY	A	B	C	D
S-ILS 23R	RA 150/14 150 DA 1134			

HIRL Rwy 5L-23R and 5R-23L
REIL Rwy 5R and 23L
TDZ/CL Rwy 5R and 23R

SA CATEGORY I ILS- SPECIAL AIRCREW & AIRCRAFT CERTIFICATION REQUIRED

SE-1, 20 MAR 2025 to 17 APR 2025

SE-1, 20 MAR 2025 to 17 APR 2025