

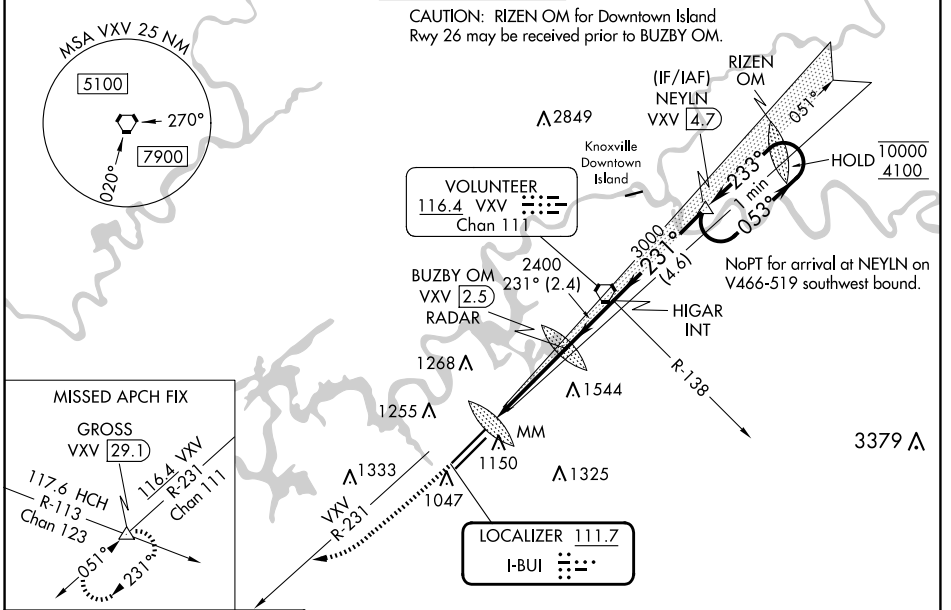
LOC I-BUI <b>111.7</b>	APP CRS <b>231°</b>	Rwy Idg TDZE Apt Elev	<b>9495</b> <b>984</b> <b>986</b>
---------------------------	------------------------	-----------------------------	---

# ILS or LOC RWY 23R

MC GHEE TYSON (T'YS)

DME or RADAR required.		ALSIF-2	MISSED APPROACH: Climb to 2000 then climbing right turn to 4000 on heading 240° and VXV VORTAC R-231 to GROSS INT/VXV 29.1 DME and hold.
<p>▼ For inop ALS, increase S-ILS 23R Cat E visibility to RVR 4000; increase S-LOC 23R Cat C/D/E visibility to 1/8 SM.</p> <p>▲</p>			

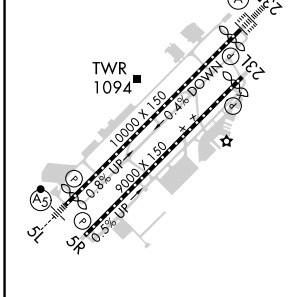
ATIS <b>128.35</b>	KNOXVILLE APP CON <b>123.9 360.8</b>	KNOXVILLE TOWER <b>121.2 257.8</b>	GND CON <b>121.9 348.6</b>	CLNC DEL <b>121.65</b>
-----------------------	---	---------------------------------------	-------------------------------	---------------------------



SE-1, 20 MAR 2025 to 17 APR 2025

SE-1, 20 MAR 2025 to 17 APR 2025

ELEV 986	D	TDZE 984
----------	---	----------



	2000	4000	VXV R-231	GROSS	One Minute Holding Pattern					
	↑	hdg 240°	△							
			BUZBY OM VXV 2.5 RADAR	HIGAR INT	NEYNLN VXV 4.7					
			VXV 5	2364	3000	053°	10000	233°	4100	GS 3.00° TCH 53
			VXV 6.6	MM	2400	231°	3000			
			0.3	1.3	2.5 NM	2.4 NM	4.6 NM			
CATEGORY	A		B		C		D		E	
S-ILS 23R	1184/18					200 (200-½)				
S-LOC 23R	1560/24		576 (600-½)		1560-1¼		576 (600-1¼)			
CIRCLING	1560-1		574 (600-1)		1660-2		1900-3		914 (1000-3)	
					674 (700-2)					

HIRL Rws 5L-23R and 5R-23L  
REIL Rws 5R and 23L  
TDZ/CL Rws 5R and 23R

FAF to MAP 4.2 NM

Knots	60	90	120	150	180
Min:Sec	4:12	2:48	2:06	1:41	1:24