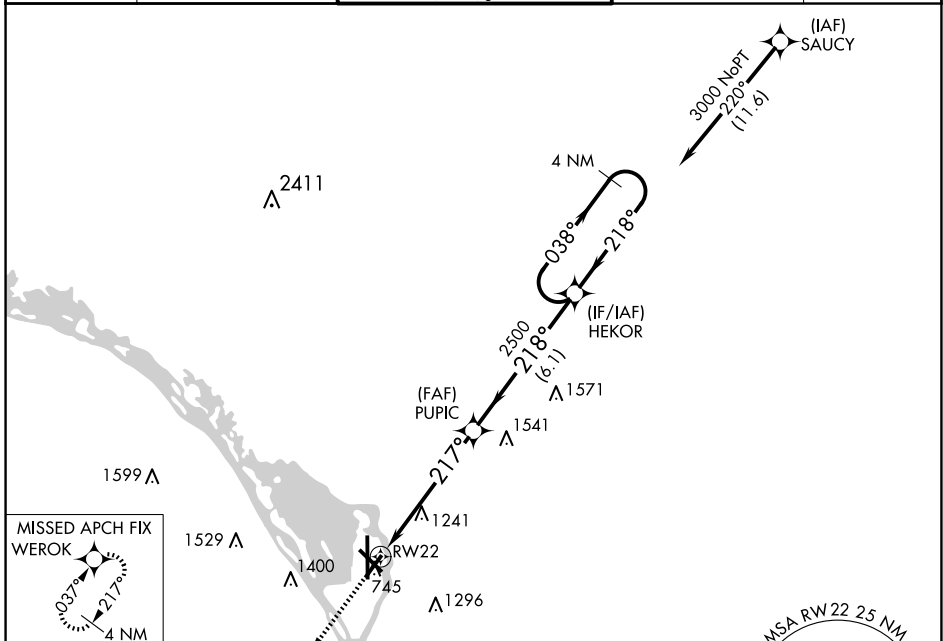


APP CRS	Rwy Idg	5199
217°	TDZE	654
	Apt Elev	656

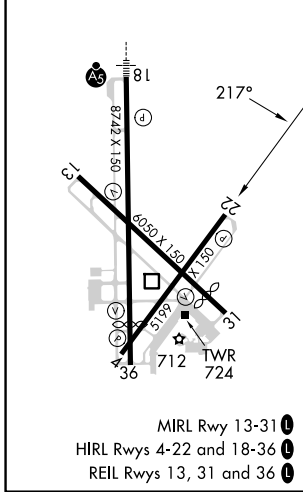
RNAV (GPS) RWY 22

LA CROSSE RGNL (LSE)

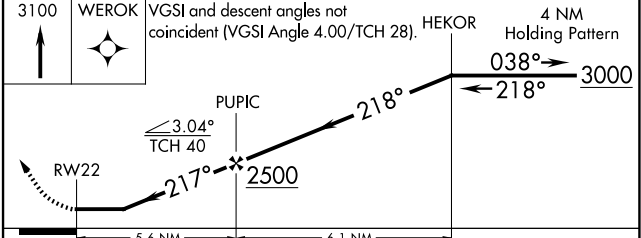
RNP APCH.		When local altimeter setting not received, use Winona altimeter setting and increase all MDA 60 feet. Rwy 22 helicopter visibility reduction below 1 SM NA.		MISSED APPROACH: Climb to 3100 direct WEROK and hold.	
ATIS	MINNEAPOLIS CENTER	LA CROSSE TOWER *	GND CON	UNICOM	
124.95	128.6 363.0	118.45 (CTAF) 251.075	121.8	122.95	



ELEV	656	D	TDZE	654
------	------------	----------	------	------------



3100	WEROK	VGSI and descent angles not coincident (VGSI Angle 4.00/TCH 28).	HEKOR	4 NM Holding Pattern
------	-------	--	-------	----------------------



CATEGORY	A	B	C	D
LNAV MDA	1820-1/4 1166 (1200-1/4)	1820-1/2 1166 (1200-1/2)	1820-3	1166 (1200-3)
C CIRCLING	1820-1/4 1164 (1200-1/4)	1820-1/2 1164 (1200-1/2)	1820-3	1164 (1200-3)

EC-3, 20 MAR 2025 to 17 APR 2025

EC-3, 20 MAR 2025 to 17 APR 2025