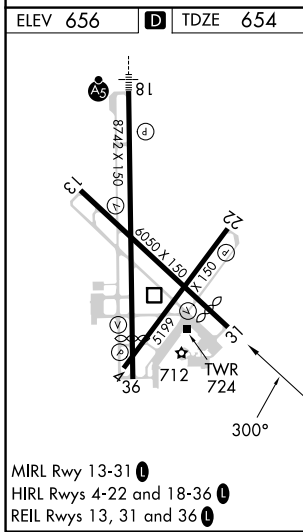
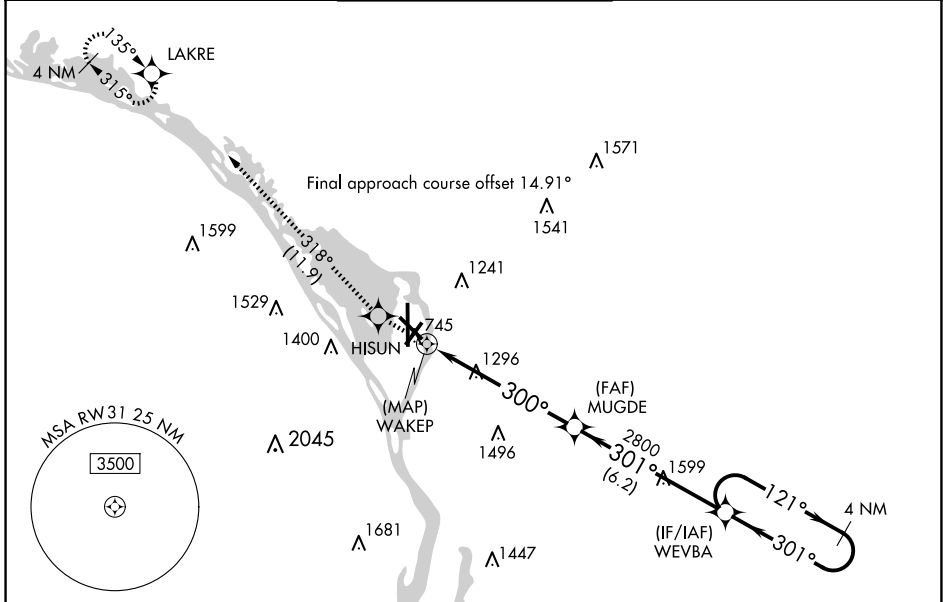


APP CRS	Rwy Idg	5310
300°	TDZE	654
	Apt Elev	656

RNAV (GPS) RWY 31

LA CROSSE RGNL (LSE)

RNP APCH.		<p>⚠ Circling Rwy 22 NA at night. Rwy 31 helicopter visibility reduction below 1 SM NA. When local altimeter setting not received, use Winona altimeter setting and increase all MDA 60 feet.</p> <p>❄ -22°C</p>		<p>MISSED APPROACH: Climb to 3000 direct HISUN and on track 318° to LAKRE and hold.</p>	
<p>ATIS</p> <p>124.95</p>	<p>MINNEAPOLIS CENTER</p> <p>128.6 363.0</p>	<p>LA CROSSE TOWER ★</p> <p>118.45 (CTAF) 251.075</p>	<p>GND CON</p> <p>121.8</p>	<p>UNICOM</p> <p>122.95</p>	



3000	HISUN	tr 318°	LAKRE	WEVBA	4 NM Holding Pattern
					Visual Segment - Obstacles.
0.4		6.1 NM		6.2 NM	
CATEGORY	A		B		C
LNAV MDA	1720-1¼ 1066 (1100-1¼)		1720-1½ 1066 (1100-1½)		1720-3 1066 (1100-3)
C CIRCLING	1720-1¼ 1064 (1100-1¼)		1720-1½ 1064 (1100-1½)		1760-3 1820-3 1104 (1200-3) 1164 (1200-3)

EC-3, 20 MAR 2025 to 17 APR 2025

EC-3, 20 MAR 2025 to 17 APR 2025