

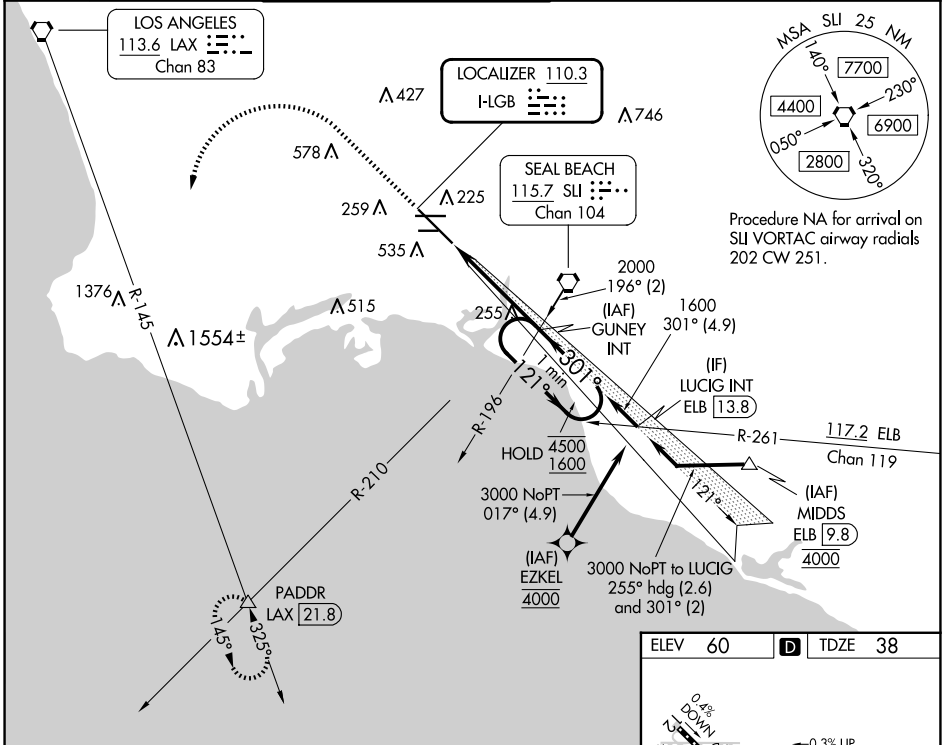
LOC I-LGB	APP CRS	Rwy Ldg	<b>7414</b>
<b>110.3</b>	<b>301°</b>	TDZE	<b>38</b>
		Apt Elev	<b>60</b>

# ILS or LOC RWY 30

## LONG BEACH (DAUGHERTY FLD) (LGB)

From EZKEL: RNAV 1-GPS required.	MALSR	MISSED APPROACH: Climb to 800 then climbing left turn to 3000 on heading 200° and LAX VORTAC R-145 to PADDR INT/LAX 21.8 DME and hold.
▼ For inop ALS, increase S-LOC 30 Cats C/D visibility to 1 3/8 SM.	AS	

ATIS <b>127.75</b>	SOCAL APP CON <b>125.35 316.125</b>	LONG BEACH TOWER ★ <b>120.5 257.6</b> (Rwy 12) <b>119.4</b> (CTAF) <b>257.6</b> (Rwy 30)	GND CON <b>133.0 257.6</b>	CLNC DEL <b>118.15</b>	UNICOM <b>122.95</b>
-----------------------	--	--	-------------------------------	---------------------------	-------------------------



SW-3, 20 MAR 2025 to 17 APR 2025

SW-3, 20 MAR 2025 to 17 APR 2025

800	3000	LAX R-145	PADDR	GUNNEY INT	One Minute Holding Pattern	ELEV 60	TDZE 38
↑	hdg 200°		△	1600			
VGSI and ILS glidepath not coincident (VGSI Angle 3.00/TCH 64).						121° → 4500 ← 301° 1600 1600 GS 3.00° TCH 58	
4.7 NM						TDZ/CL Rwy 30 HIRL Rwy 12-30 HIRL Rwy 8R-26L MIRL Rwy 8L-26R REIL Rwy 8R, 12, 26L, and 26R FAF to MAP 4.7 NM TWR 181	
CATEGORY	A	B	C	D			
S-ILS 30	258/18		220 (200-1/2)				
S-LOC 30	520/24	482 (500-1/2)	520/50 482 (500-1)				
CIRCLING	840-1	780 (800-1)	840-2 1/4	840-2 1/2			
			780 (800-2 1/4)	780 (800-2 1/2)			
	Knots	60	90	120	150	180	
	Min:Sec	4:42	3:08	2:21	1:53	1:34	