

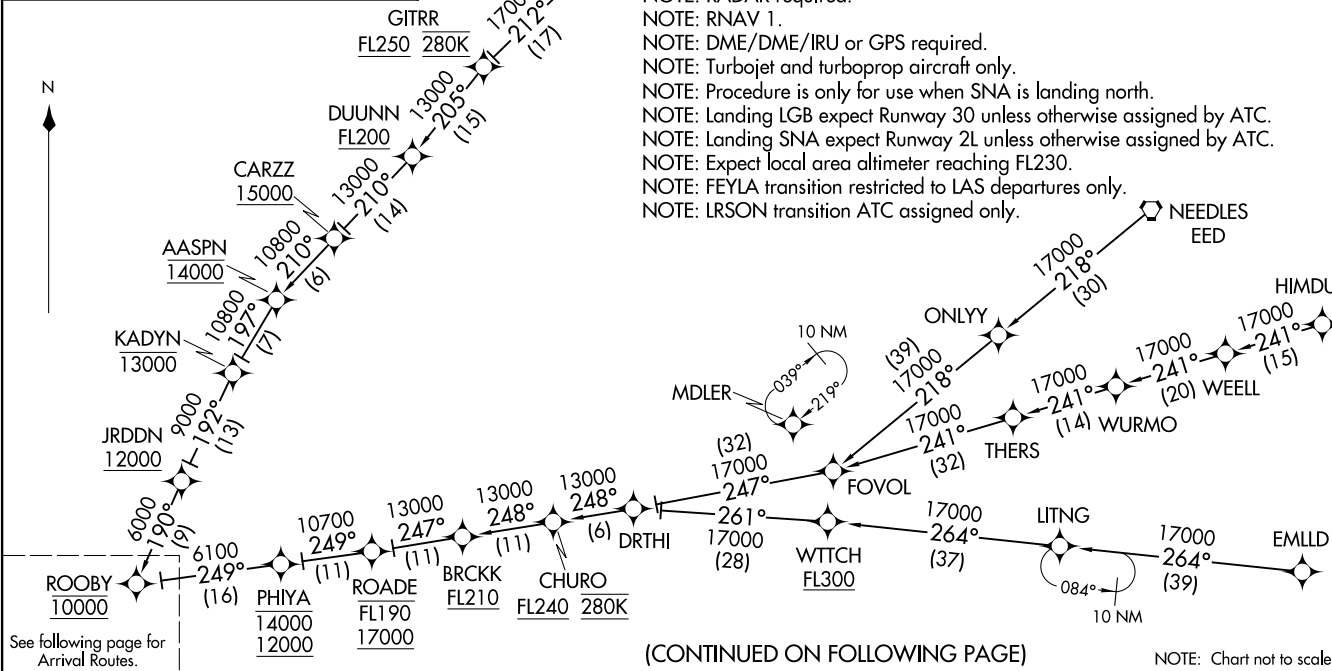
(ROOBY.ROOBY3) 01FEB18

ROOBY THREE ARRIVAL (RNAV) Transition Routes

LONG BEACH, CALIFORNIA

- EMLD TRANSITION (EMLD.ROOBY3)
- FEYLA TRANSITION (FEYLA.ROOBY3)
- HIMDU TRANSITION (HIMDU.ROOBY3)
- LRSON TRANSITION (LRSON.ROOBY3)
- MARUE TRANSITION (MARUE.ROOBY3)
- NATEE TRANSITION (NATEE.ROOBY3)
- NEEDLES TRANSITION (EED.ROOBY3)

SOCAL APP CON
134.0 278.3
LGB ATIS
127.75
SNA D-ATIS
126.0



- NOTE: RADAR required.
- NOTE: RNAV 1.
- NOTE: DME/DME/IRU or GPS required.
- NOTE: Turbojet and turboprop aircraft only.
- NOTE: Procedure is only for use when SNA is landing north.
- NOTE: Landing LGB expect Runway 30 unless otherwise assigned by ATC.
- NOTE: Landing SNA expect Runway 2L unless otherwise assigned by ATC.
- NOTE: Expect local area altimeter reaching FL230.
- NOTE: FEYLA transition restricted to LAS departures only.
- NOTE: LRSON transition ATC assigned only.

(CONTINUED ON FOLLOWING PAGE)

NOTE: Chart not to scale.

(ROOBY.ROOBY3) 21168

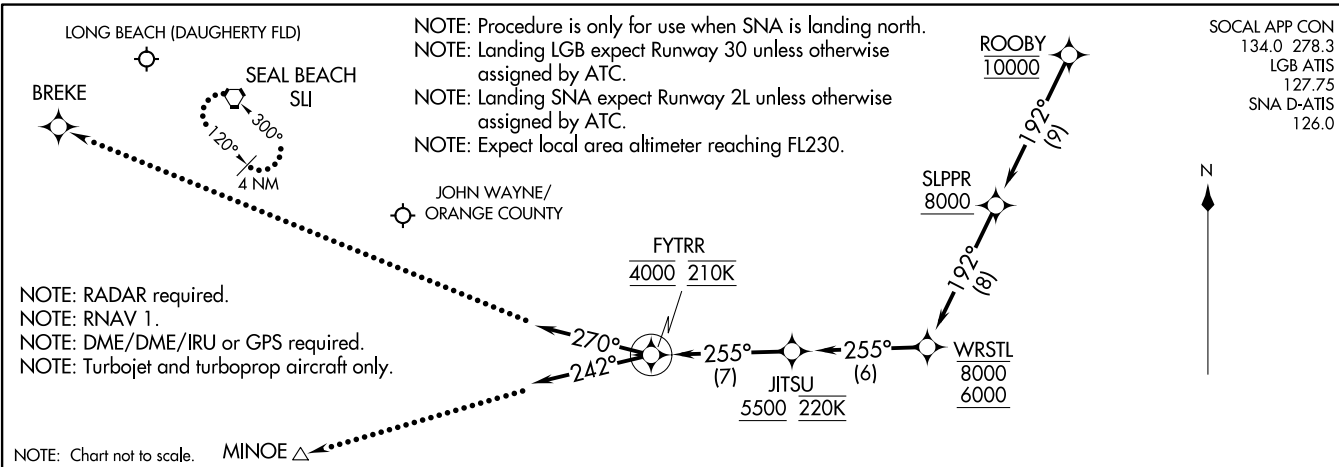
Transition Routes

LONG BEACH, CALIFORNIA

AL-236 (FAA)

ROOBY THREE ARRIVAL (RNAV) Arrival Routes
(ROOBY, ROOBY3) 01 FEB 18

LONG BEACH, CALIFORNIA



NOTE: RADAR required.
NOTE: RNAV 1.
NOTE: DME/DME/IRU or GPS required.
NOTE: Turbojet and turboprop aircraft only.

NOTE: Chart not to scale. MINOE Δ

NOTE: Procedure is only for use when SNA is landing north.
NOTE: Landing LGB expect Runway 30 unless otherwise assigned by ATC.
NOTE: Landing SNA expect Runway 2L unless otherwise assigned by ATC.
NOTE: Expect local area altimeter reaching FL230.

SOCAL APP CON
134.0 278.3
LGB ATIS
127.75
SNA D-ATIS
126.0



ARRIVAL ROUTE DESCRIPTION

LANDING LGB: From ROOBY on track 192° to cross SLPPR at or above 8000, then on track 192° to cross WRSTL between 6000 and 8000, then on track 255° to cross JITSU at or above 5500 and at 220K, then on track 255° to cross FYTRR at 4000 and at 210K, then on heading 270° or as assigned by ATC. Expect RADAR vectors to final approach course.

LANDING SNA: From ROOBY on track 192° to cross SLPPR at or above 8000, then on track 192° to cross WRSTL between 6000 and 8000, then on track 255° to cross JITSU at or above 5500 and at 220K, then on track 255° to cross FYTRR at 4000 and at 210K, then on heading 242° or as assigned by ATC. Expect RADAR vectors to final approach course.

LOST COMMUNICATIONS:

- LANDING LGB RUNWAY 30:** Intercept and proceed on the RNAV (RNP) RWY 30 or ILS RWY 30 approach.
- LANDING LGB RUNWAY 12:** Maintain 3000 and proceed direct BREKE then on the RNAV (RNP) RWY 12 approach. If unable approach to LGB climb to 4000 direct BREKE then on the RNAV (RNP) RWY 12 approach. If unable approach to LGB climb to 4000 direct BREKE then on the RNAV (RNP) RWY 12 approach.
- LANDING SNA RUNWAY 2L:** Proceed on the RNAV (RNP) RWY 2L approach or maintain 3000 and proceed direct MINOE then on the LOC BC RWY 2L approach. If unable approach to SNA climb to 5000 direct SLI VORTAC and hold.

(ROOBY, ROOBY3) 21168
AL-236 (FAA)
LONG BEACH, CALIFORNIA