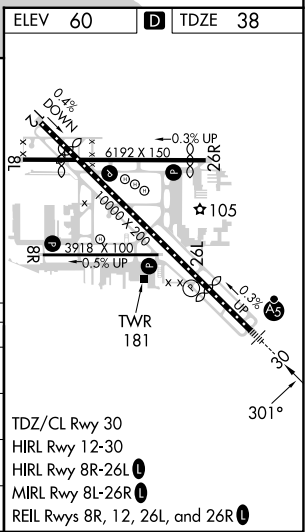
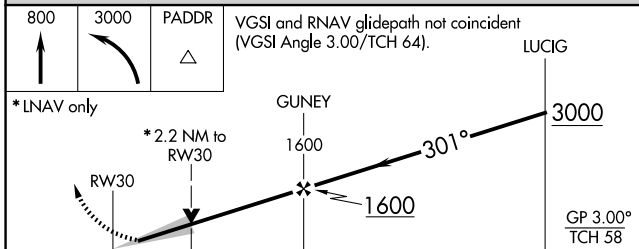
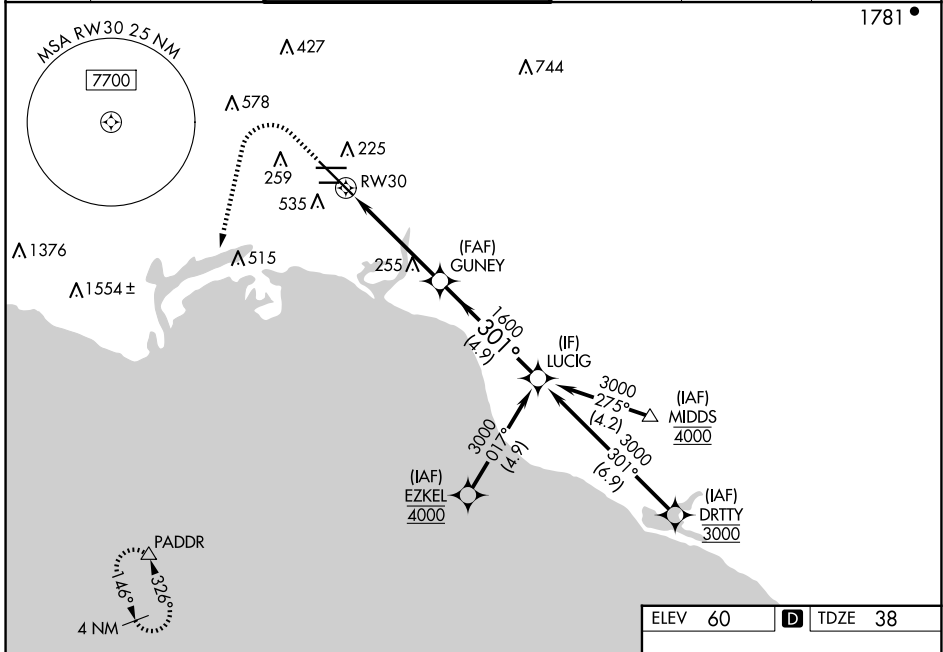


WAAS CH <b>99521</b> <b>W30A</b>	APP CRS <b>301°</b>	Rwy Idg TDZE Apt Elev	<b>7414</b> <b>38</b> <b>60</b>
--	------------------------	-----------------------------	---------------------------------------

# RNAV (GPS) Z RWY 30

LONG BEACH (DAUGHERTY FLD) (LGB)

RNP APCH. ▼ For uncompensated Baro-VNAV systems, LNAV/VNAV NA below 4°C or above 54°C. For inop ALS, increase LNAV Cat C and D visibility to 1½ SM.		MALSR 	MISSED APPROACH: Climb to 800 then climbing left turn to 3000 direct PADDR and hold		
ATIS <b>127.75</b>	SOCAL APP CON <b>125.35 316.125</b>	LONG BEACH TOWER* <b>120.5 257.6</b> (Rwy 12) <b>119.4</b> (CTAF) <b>257.6</b> (Rwy 30)	GND CON <b>133.0 257.6</b>	CLNC DEL <b>118.15</b>	UNICOM <b>122.95</b>



CATEGORY	A	B	C	D
LPV DA	261/18 223 (300-½)			
LNAV/VNAV DA	568/55 530 (600-1)			
LNAV MDA	520/24 482 (500-½)	520/50 482 (500-1)		
<b>C</b> CIRCLING	840-1 780 (800-1)	840-1¾ 780 (800-1¾)		

TDZ/CL Rwy 30  
 HIRL Rwy 12-30  
 HIRL Rwy 8R-26L **L**  
 MIRL Rwy 8L-26R **L**  
 REIL Rws 8R, 12, 26L, and 26R **L**

SW-3, 20 MAR 2025 to 17 APR 2025

SW-3, 20 MAR 2025 to 17 APR 2025