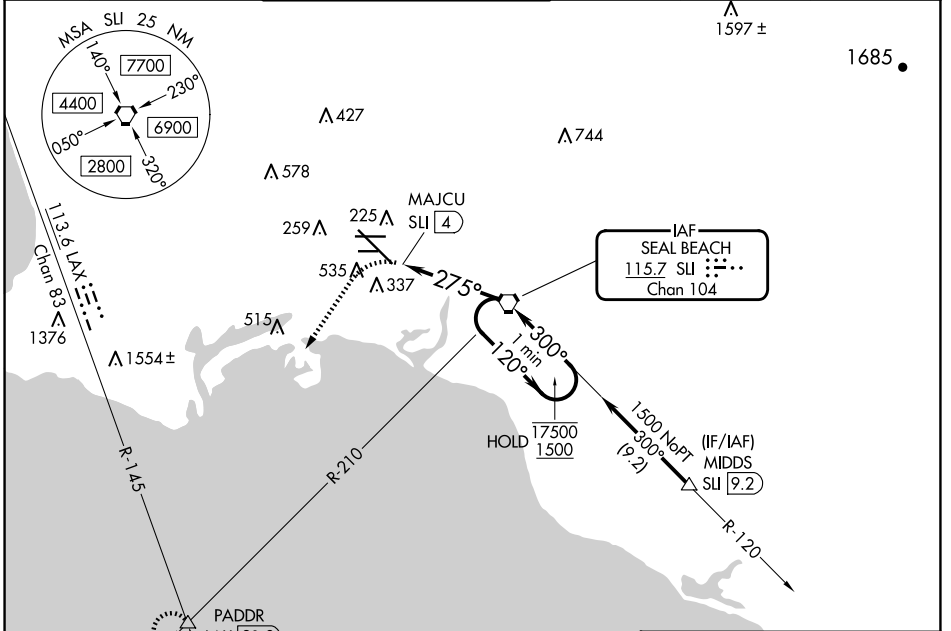


VORTAC SU <b>115.7</b> Chan <b>104</b>	APP CRS <b>275°</b>	Rwy ldg TDZE <b>38</b> Apt Elev <b>60</b>	<b>7414</b>
--	------------------------	---	-------------

# VOR or TACAN RWY 30

LONG BEACH (DAUGHERTY FLD) (LGB)

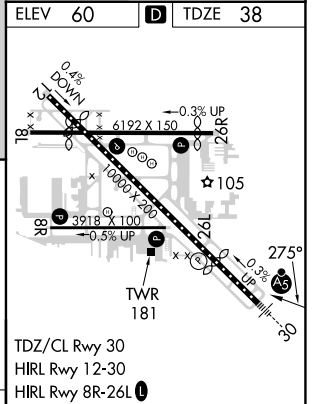
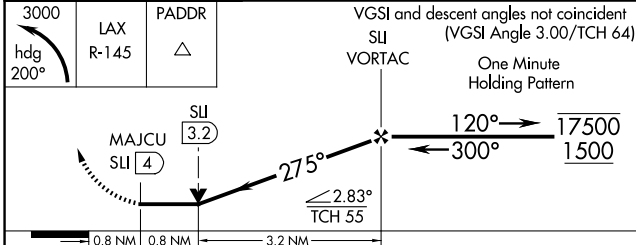
<p>Rwy 30 helicopter visibility reduction below RVR 4000 NA. Inop table does not apply.</p>	<p>MALS R</p>	<p>MISSED APPROACH: Climbing left turn to 3000 on heading 200° and LAX VORTAC R-145 to PADDR INT/LAX 21.8 DME and hold.</p>			
		<p>ATIS <b>127.75</b></p>	<p>SOCAL APP CON <b>125.35 316.125</b></p>	<p>LONG BEACH TOWER* <b>120.5 257.6</b> (Rwy 12) <b>119.4</b> (CTAF) <b>257.6</b> (Rwy 30)</p>	<p>GND CON <b>133.0 257.6</b></p>



SW-3, 20 MAR 2025 to 17 APR 2025

SW-3, 20 MAR 2025 to 17 APR 2025

ELEV <b>60</b>	<b>D</b> TDZE <b>38</b>
----------------	-------------------------



CATEGORY	A	B	C	D
S-30	600/55 562 (600-1)		600-1 5/8 562 (600-1 1/8)	
CIRCLING	840-1 780 (800-1)		840-2 1/4 780 (800-2 1/4)	840-2 1/2 780 (800-2 1/2)

FAF to MAP 4 NM					
Knots	60	90	120	150	180
Min:Sec	4:00	2:40	2:00	1:36	1:20