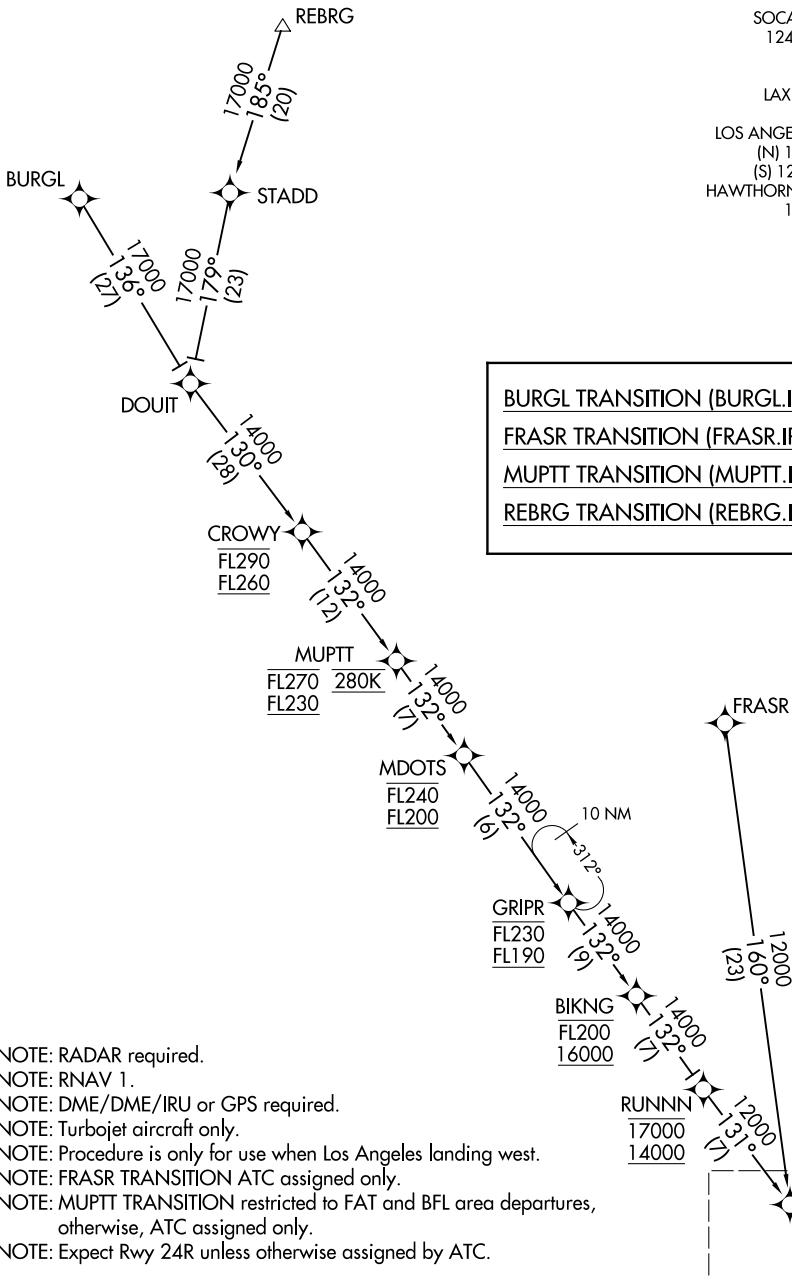


SOCAL APP CON
 124.5 235.975
 HHR ATIS
 118.4
 LAX D-ATIS ARR
 133.8
 LOS ANGELES TOWER
 (N) 133.9 239.3
 (S) 120.95 379.1
 HAWTHORNE TOWER ★
 121.1 257.8



- NOTE: RADAR required.
- NOTE: RNAV 1.
- NOTE: DME/DME/IRU or GPS required.
- NOTE: Turbojet aircraft only.
- NOTE: Procedure is only for use when Los Angeles landing west.
- NOTE: FRASR TRANSITION ATC assigned only.
- NOTE: MUPTT TRANSITION restricted to FAT and BFL area departures, otherwise, ATC assigned only.
- NOTE: Expect Rwy 24R unless otherwise assigned by ATC.

NOTE: Chart not to scale.

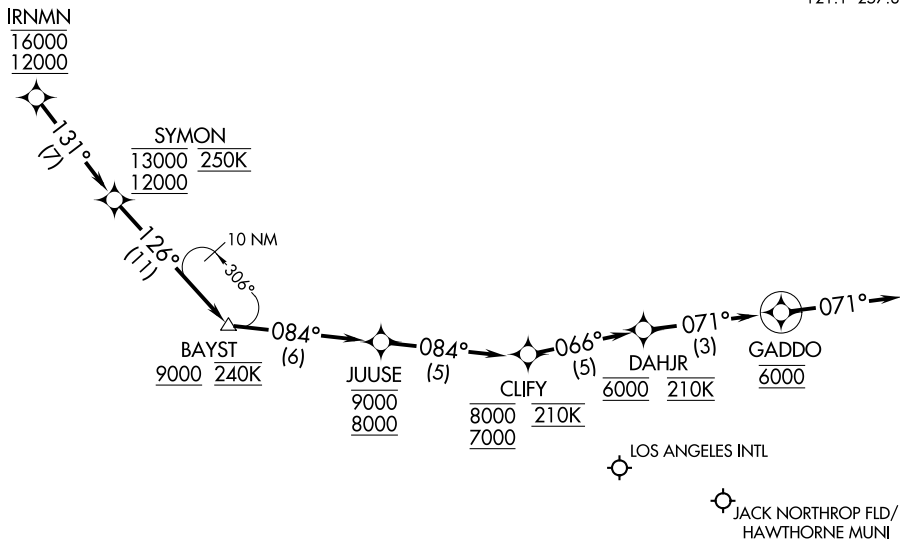
(CONTINUED ON FOLLOWING PAGE)

See following page for arrival route.

SW-3, 20 MAR 2025 to 17 APR 2025

SW-3, 20 MAR 2025 to 17 APR 2025

SOCAL APP CON
 124.5 235.975
 HHR ATIS
 118.4
 LAX D-ATIS ARR
 133.8
 LOS ANGELES TOWER
 (N) 133.9 239.3
 (S) 120.95 379.1
 HAWTHORNE TOWER *
 121.1 257.8



SW-3, 20 MAR 2025 to 17 APR 2025

SW-3, 20 MAR 2025 to 17 APR 2025

- NOTE: RADAR required.
- NOTE: RNAV 1.
- NOTE: DME/DME/IRU or GPS required.
- NOTE: Turbojet aircraft only.
- NOTE: Procedure is only for use when Los Angeles landing west.
- NOTE: Expect Rwy 24R unless otherwise assigned by ATC.

NOTE: Chart not to scale.

ARRIVAL ROUTE DESCRIPTION

LANDING KLAX/KHHR: From IRNMN on track 131° to cross SYMON between 12000 and 13000 and at 250K, then on track 126° to cross BAYST at or above 9000 and at 240K, then on track 084° to cross JUUSE between 8000 and 9000, then on track 084° to cross CLIFY between 7000 and 8000 and at 210K, then on track 066° to cross DAHJR at 6000 and at 210K, then on track 071° to cross GADDO at 6000, then on track 071°. Expect RADAR vectors to final approach course.

LOST COMMUNICATIONS

In the event of lost communications proceed on the RNAV (RNP) Z RWY 24R approach or the ILS or LOC RWY 24R.