

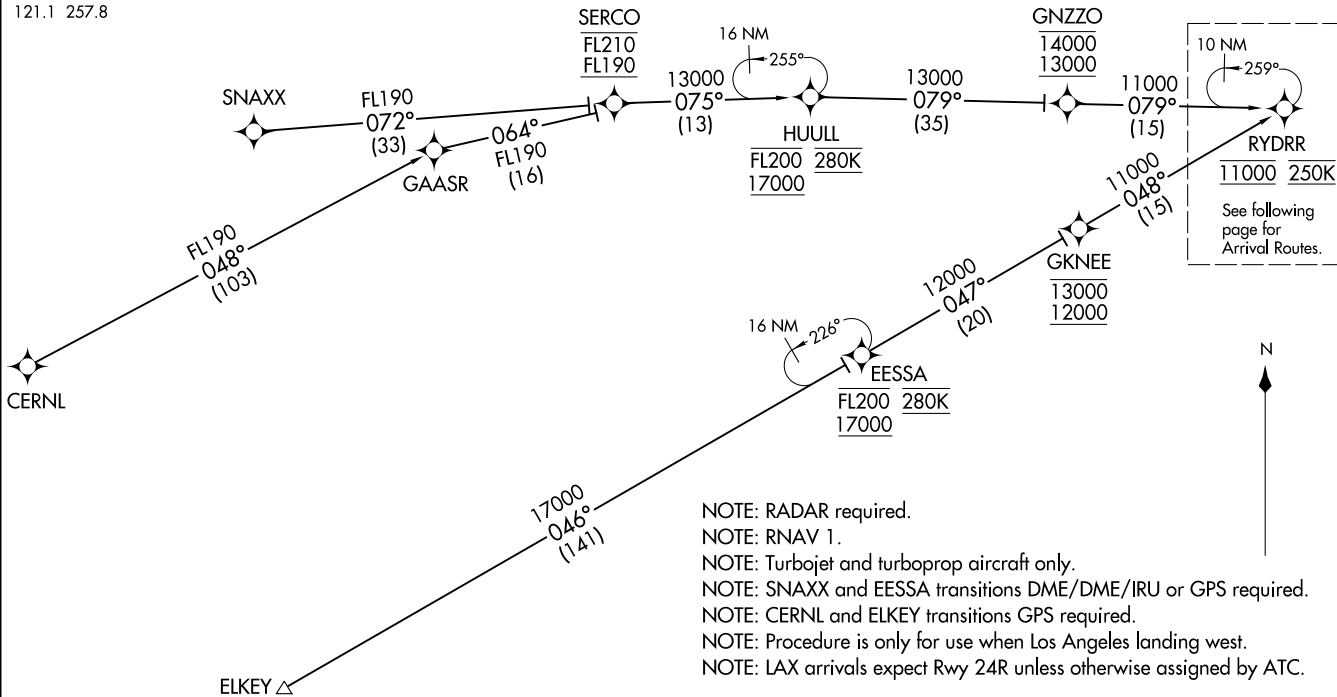
(RYDRR.RYDRR2) 24MAY18

RYDRR TWO ARRIVAL (RNAV) Transition Routes

LOS ANGELES, CALIFORNIA

SOCAL APP CON
124.5 235.975
LAX D-ATIS ARR
133.8
HHR ATIS
118.4
LOS ANGELES TOWER
(N) 133.9 239.3
(S) 120.95 379.1
HAWTHORNE TOWER*
121.1 257.8

CERNL TRANSITION (CERNL.RYDRR2)
EESSA TRANSITION (EESSA.RYDRR2)
ELKEY TRANSITION (ELKEY.RYDRR2)
SNAXX TRANSITION (SNAXX.RYDRR2)



NOTE: RADAR required.
NOTE: RNAV 1.
NOTE: Turbojet and turboprop aircraft only.
NOTE: SNAXX and EESSA transitions DME/DME/IRU or GPS required.
NOTE: CERNL and ELKEY transitions GPS required.
NOTE: Procedure is only for use when Los Angeles landing west.
NOTE: LAX arrivals expect Rwy 24R unless otherwise assigned by ATC.

(CONTINUED ON FOLLOWING PAGE)

NOTE: Chart not to scale.

(RYDRR.RYDRR2) 21168

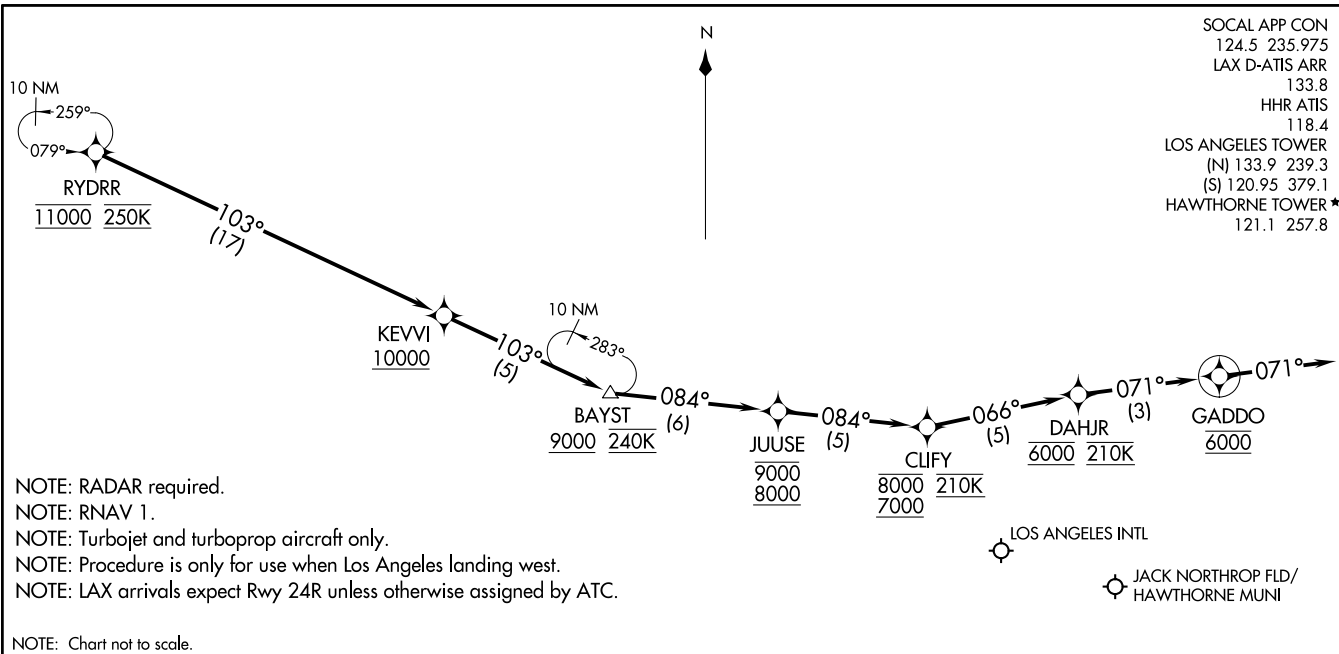
RYDRR TWO ARRIVAL (RNAV) Transition Routes

AL-237 (FAA)

LOS ANGELES, CALIFORNIA

RYDRR, RYDRR2) 24MAY18

RYDRR TWO ARRIVAL (RNAV) Arrival Routes



(RYDRR, RYDRR2) 21168

AL-237 (FAA)

LOS ANGELES, CALIFORNIA

ARRIVAL ROUTE DESCRIPTION

LANDING KLAX/KHHR: From RYDRR on track 103° to cross KEVVI at or above 10000, then on track 103° to cross BAYST at or above 9000 and at 240K, then on track 084° to cross JUUSE between 8000 and 9000, then on track 084° to cross CLIFY between 7000 and 8000 and at 210K, then on track 066° to cross DAHJR at 6000 and at 210K, then on track 071° to cross GADDO at 6000, then on track 071°. Expect RADAR vectors to final approach course.

LOST COMMUNICATIONS

In the event of lost communications: RNP LAX arrivals proceed on the RNAV (RNP) Z RWY 24R approach at DAHJR or proceed on the ILS or LOC RWY 24R.

LOS ANGELES, CALIFORNIA