

LOC/DME I-JJM 110.55 Chan 42 (Y)	APP CRS 350°	Rwy Idg TDZE Apt Elev	7800 479 501
---	------------------------	-----------------------------	---

ILS RWY 35R (CAT II & III)

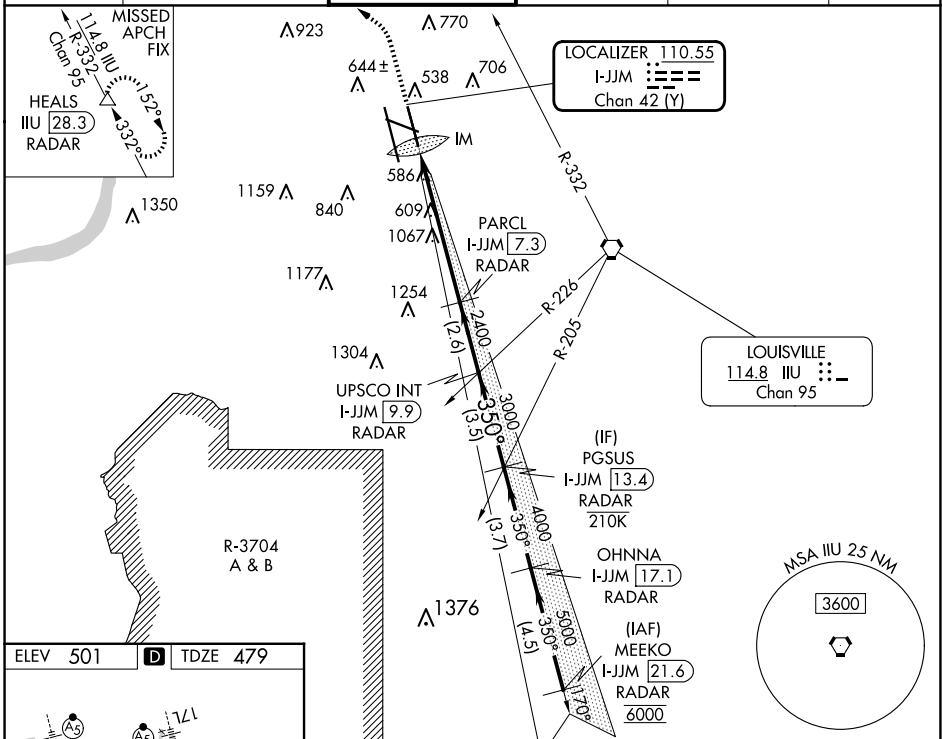
LOUISVILLE MUHAMMAD ALI INTL (SDF)

Simultaneous approach authorized. Cat II: RVR 1000 authorized with specific OPSPEC, MSPEC, or LOA approval and use of autoland or HUD to touchdown.

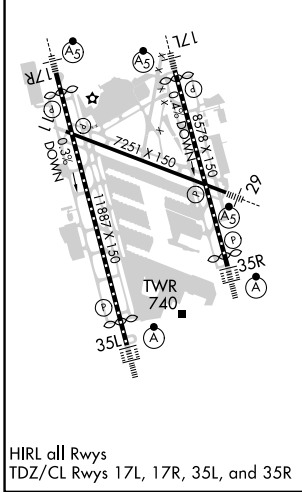


MISSED APPROACH: Climb to 2500 then climbing left turn to 4000 on heading 350° and on IJU VORTAC R-332 to HEALS/28.3 DME/RADAR and hold.

D-ATIS 118.725	LOUISVILLE APP CON 132.075 327.0	LOUISVILLE TOWER 124.2 257.8	GND CON 121.7 348.6	CLNC DEL 126.1 275.8	CPDLC
--------------------------	--	--	-------------------------------	--------------------------------	-------



ELEV 501	D	TDZE 479
----------	----------	----------



2500	4000	HEALS IJU R-332	VGSI and ILS glidepath not coincident (VGSI Angle 3.00/TCH 71).	PGSUS I-JJM 13.4 RADAR
hdg 350°				PARCL I-JJM 7.3 RADAR
				UPSCO INT I-JJM 9.9 RADAR
				I-JJM 13.4 RADAR
				I-JJM 17.1 RADAR
				I-JJM 21.6 RADAR
				6000
				2400
				3000
				4000
				GS 3.00° TCH 60
				5.9 NM
				2.6 NM
				3.5 NM
CATEGORY	A	B	C	D
S-ILS 35R	CAT II RA 100/12 100 DA 579			
S-ILS 35R	CAT III RVR 06			

CATEGORY II & III ILS - SPECIAL AIRCREW & AIRCRAFT CERTIFICATION REQUIRED

SE-1, 20 MAR 2025 to 17 APR 2025

SE-1, 20 MAR 2025 to 17 APR 2025