

| | | |
|---|------------------------|--|
| LOC/DME I-SNU 110.3 Chan 40 | APP CRS 170° | Rwy Idg 10000 TDZE 485 Apt Elev 501 |
|---|------------------------|--|

ILS or LOC RWY 17R

LOUISVILLE MUHAMMAD ALI INTL (SDF)

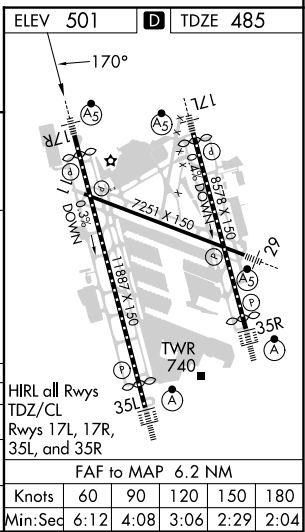
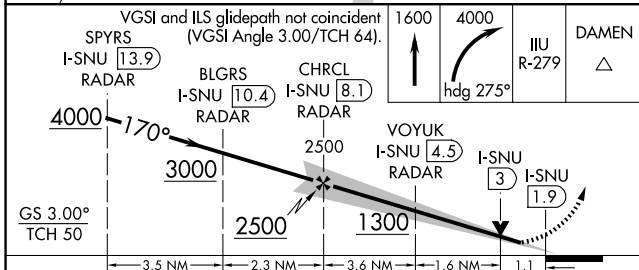
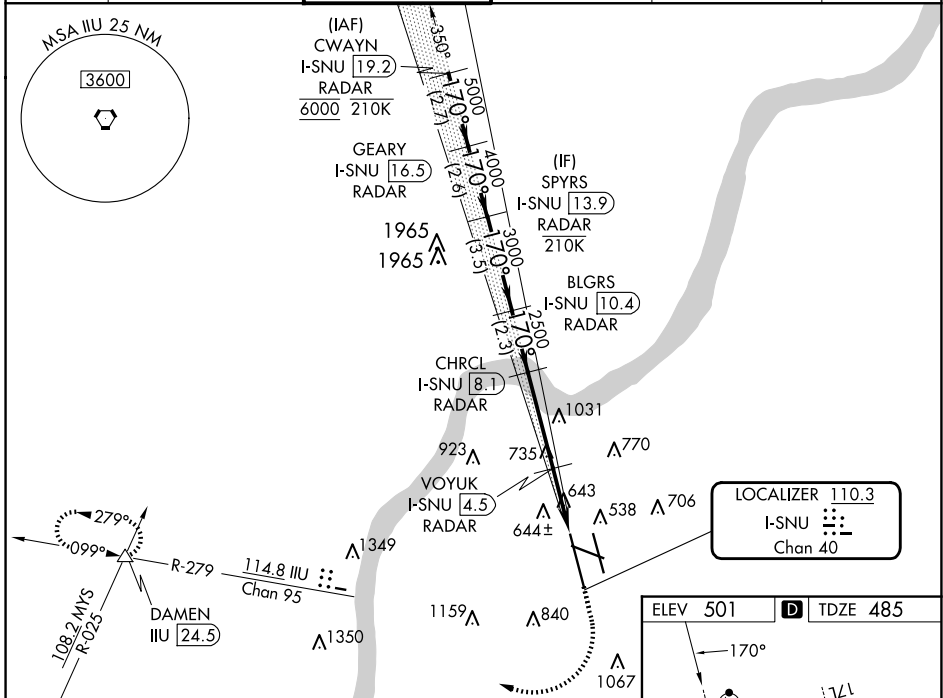
RADAR required for procedure entry at CWAYN.
DME or RADAR required.

⚠ Simultaneous approach authorized. Circling Rwy 11 NA at night.
⚠ For inop ALS, increase S-LOC 17R Cat C/D visibility to RVR 6000.

MALSRL
AS

MISSED APPROACH: Climb to 1600 then climbing right turn to 4000 on heading 275° and on IJU VORTAC R-279 to DAMEN INT/24.5 DME and hold.

| | | | | | |
|--------------------------|--|--|-------------------------------|--------------------------------|-------|
| D-ATIS 118.725 | LOUISVILLE APP CON 132.075 327.0 | LOUISVILLE TOWER 124.2 257.8 | GND CON 121.7 348.6 | CLNC DEL 126.1 275.8 | CPDLC |
|--------------------------|--|--|-------------------------------|--------------------------------|-------|



| | | | | |
|-----------|-----------------------|-----------------------|-------------------------|-----------------------|
| CATEGORY | A | B | C | D |
| S-ILS 17R | | 685/18 | 200 (200-½) | |
| S-LOC 17R | 900/24 | 415 (400-½) | 900/40 | 415 (400-¾) |
| CIRCLING | 1040-1 539 (600-1) | 1140-1 639 (700-1) | 1160-1¾ 659 (700-1¾) | 1400-3 899 (900-3) |

SE-1, 20 MAR 2025 to 17 APR 2025

SE-1, 20 MAR 2025 to 17 APR 2025