

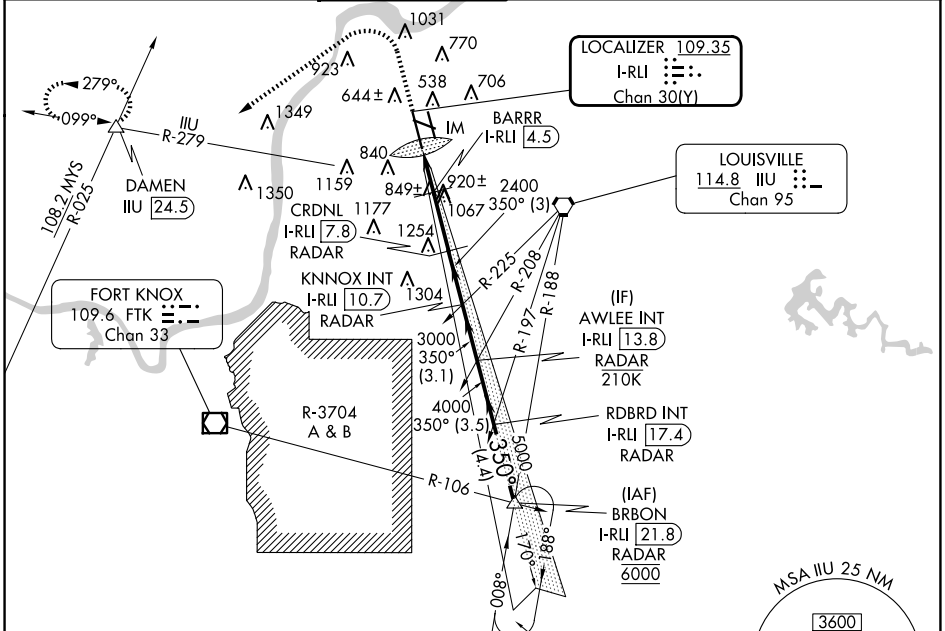
LOC/DME I-RLI <b>109.35</b>	APP CRS <b>350°</b>	Rwy Idg TDZE <b>10000</b> <b>464</b>
Chan <b>30</b> (Y)	Apt Elev <b>501</b>	

# ILS or LOC RWY 35L

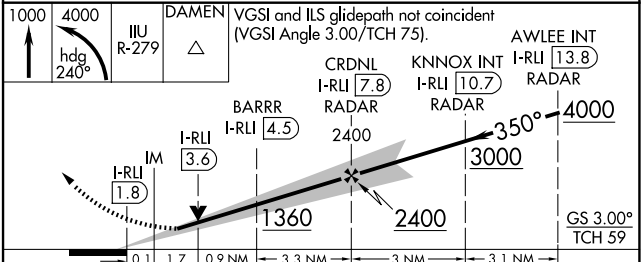
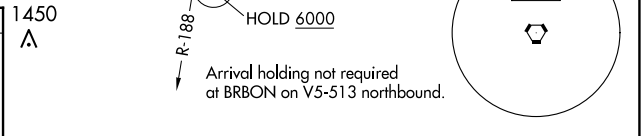
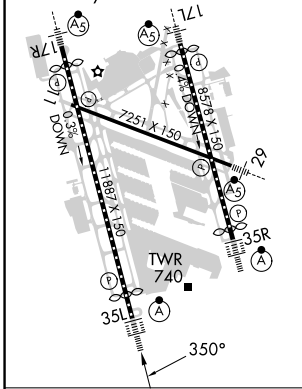
LOUISVILLE MUHAMMAD ALI INTL (SDF)

DME required for LOC only. RADAR required.		ALSF-2 	MISSED APPROACH: Climb to 1000 then climbing left turn to 4000 on heading 240° and IJU VORTAC R-279 to DAMEN INT/ IJU 24.5 DME and hold.
<p><b>▼</b> Simultaneous approach authorized. Circling Rwy 11 NA at night.</p> <p><b>▲</b> For inop ALS, increase S-LOC 35L Cat C/D visibility to 1 3/4 SM.</p>			

D-ATIS <b>118.725</b>	LOUISVILLE APP CON <b>132.075 327.0</b>	LOUISVILLE TOWER <b>124.2 257.8</b>	GND CON <b>121.7 348.6</b>	CLNC DEL <b>126.1 275.8</b>	CPDLC
--------------------------	--	--	-------------------------------	--------------------------------	-------



ELEV 501	<b>D</b> TDZE 464
TDZ/CL Rwys 17L, 17R, 35L, and 35R	
HIRL all Rwys	



CATEGORY	A				B		C		D	
S-ILS 35L	664/18 200 (200-1/2)									
S-LOC 35L	1100/24 636 (600-1/2)				1100-1 3/4 636 (600-1 3/8)					
CIRCLING	1100-1 599 (600-1)		1140-1 639 (700-1)		1160-1 3/4 659 (700-1 3/4)		1400-3 899 (900-3)			

FAF to MAP 5.9 NM					
Knots	60	90	120	150	180
Min:Sec	5:54	3:56	2:57	2:22	1:58

SE-1, 20 MAR 2025 to 17 APR 2025

SE-1, 20 MAR 2025 to 17 APR 2025