

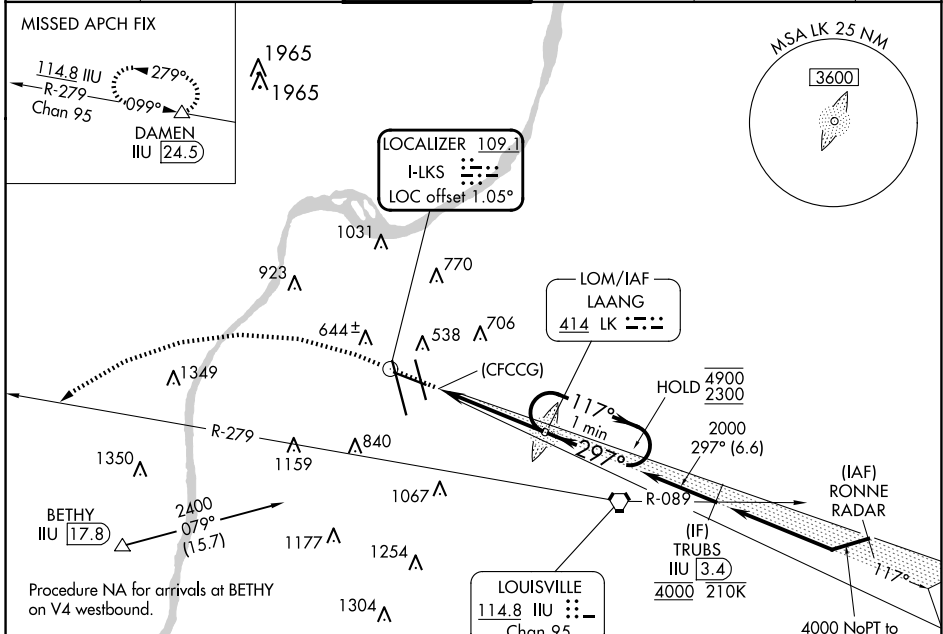
LOC I-LKS <b>109.1</b>	APP CRS <b>297°</b>	Rwy Idg TDZE Apt Elev <b>7250</b> <b>480</b> <b>501</b>
---------------------------	------------------------	--

# LOC RWY 29

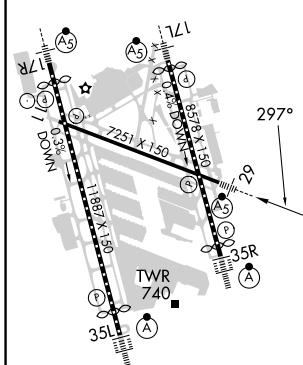
LOUISVILLE MUHAMMAD ALI INTL (SDF')

RADAR required. ADF or DME required.		MALSR 	MISSED APPROACH: Climb to 1100 then climbing left turn to 4000 heading 268° and on ILL VORTAC R-279 to DAMEN and hold.
 Circling Rwy 11 NA at night. Rwy 29 helicopter visibility reduction below RVR 4000 NA. For inop ALS, increase S-29 visibility Cats A/B to RVR 5500 and Cats C/D to 1½ SM.			

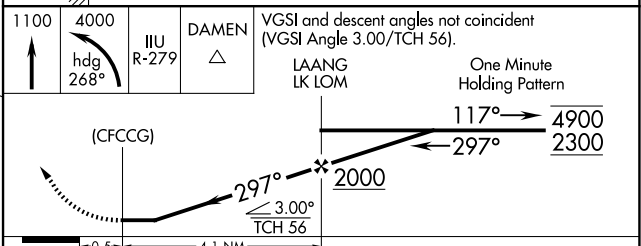
D-ATIS <b>118.725</b>	LOUISVILLE APP CON <b>132.075 327.0</b>	LOUISVILLE TOWER <b>124.2 257.8</b>	GND CON <b>121.7 348.6</b>	CLNC DEL <b>126.1 275.8</b>	CPDLC
--------------------------	--	--	-------------------------------	--------------------------------	-------



ELEV 501	<b>D</b>	TDZE 480
----------	----------	----------



R-3704 A & B	1100	4000	ILL R-279	DAMEN	VGSI and descent angles not coincident (VGSI Angle 3.00/TCH 56).
--------------	------	------	-----------	-------	--



FAF to MAP 4.1 NM	CATEGORY			
	A	B	C	D
S-29	1060/40	580 (600-¾)	1060-1¼	580 (600-1¼)
<b>C</b> CIRCLING	1060-1 559 (600-1)	1140-1 639 (700-1)	1160-1¾ 659 (700-1¾)	1400-3 899 (900-3)

SE-1, 20 MAR 2025 to 17 APR 2025

SE-1, 20 MAR 2025 to 17 APR 2025