

# SPILR ONE DEPARTURE (RNAV)

LOUISVILLE, KENTUCKY

**TOP ALTITUDE:**  
**13000**

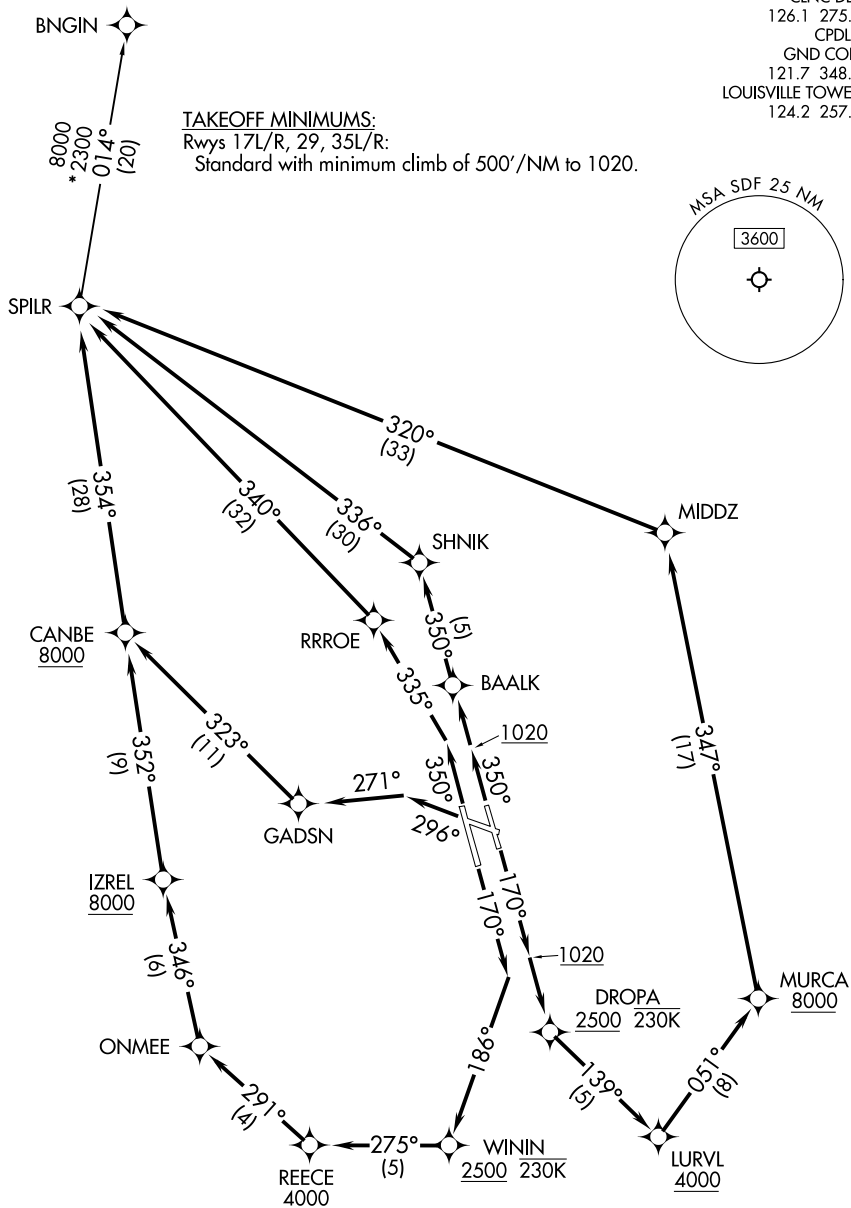
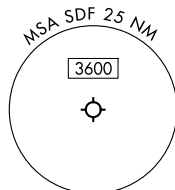
RNAV 1 - DME/DME/IRU or GPS.  
RADAR required for non-GPS equipped aircraft.

LOUISVILLE DEP CON  
132.075 327.0  
D-ATIS 118.725  
CLNC DEL  
126.1 275.8  
CPDLC  
GND CON  
121.7 348.6  
LOUISVILLE TOWER  
124.2 257.8

**TAKEOFF MINIMUMS:**

Rwys 17L/R, 29, 35L/R:

Standard with minimum climb of 500'/NM to 1020.



(CONTINUED ON FOLLOWING PAGE)

NOTE: Chart not to scale.

# SPILR ONE DEPARTURE (RNAV)

LOUISVILLE, KENTUCKY



DEPARTURE ROUTE DESCRIPTION

TAKEOFF RUNWAY 17L: Climb on heading 170° to 1020, then direct DROPA at or above 2500 and at or below 230K, then on track 139° to cross LURVL at or above 4000, then on track 051° to cross MURCA at or above 8000, then on track 347° to MIDDZ, then on track 320° to SPILR, thence . . . .

TAKEOFF RUNWAY 17R: Climb on heading 170° to intercept course 186° to cross WININ at or above 2500 and at or below 230K, then on track 275° to cross REECE at or above 4000, then on track 291° to ONMEE, then on track 346° to cross IZREL at or above 8000, then on track 352° to cross CANBE at or above 8000, then on track 354° to SPILR, thence . . . .

TAKEOFF RUNWAY 29: Climb on heading 296° to intercept course 271° to GADSN, then on track 323° to cross CANBE at or above 8000, then on track 354° to SPILR, thence . . . .

TAKEOFF RUNWAY 35L: Climb on heading 350° to intercept course 335° to RRROE, then on track 340° to SPILR, thence . . . .

TAKEOFF RUNWAY 35R: Climb on heading 350° to 1020, then direct BAALK, then on track 350° to SHNIK, then on track 336° to SPILR, thence . . . .

. . . . then on transition. Maintain 13000. Expect file altitude 10 minutes after departure.

BNGIN TRANSITION (SPILR1.BNGIN)

SE-1, 20 MAR 2025 to 17 APR 2025

SE-1, 20 MAR 2025 to 17 APR 2025