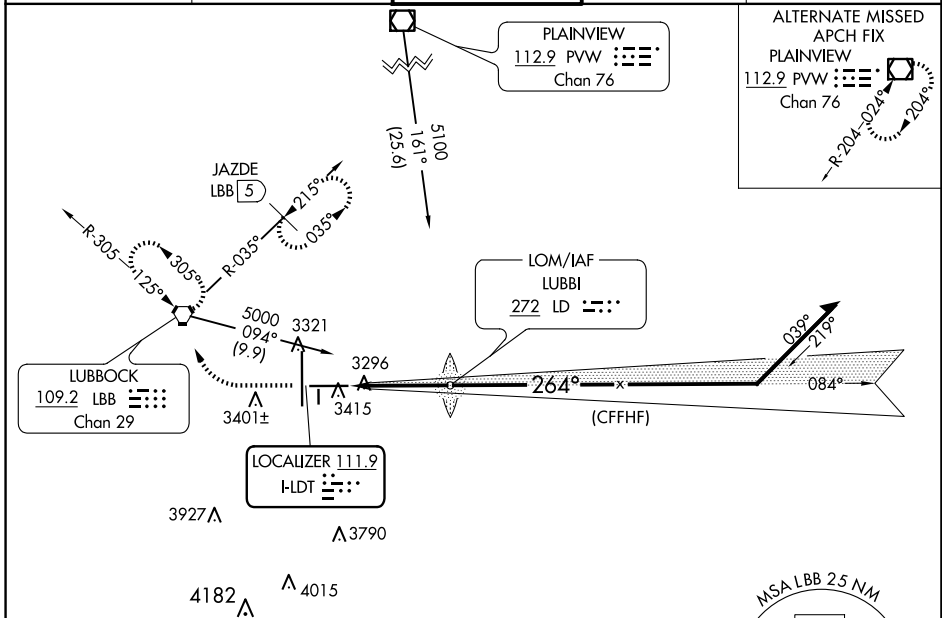


LOC IDLT 111.9	APP CRS 264°	Rwy Idg TDZE Apt Elev	8003 3255 3282
--------------------------	------------------------	-----------------------------	---

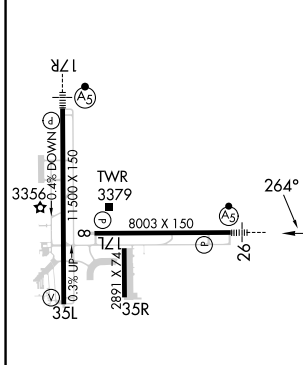
ILS or LOC RWY 26
LUBBOCK PRESTON SMITH INTL (LBB)

<p>▼ For inop MALSR, increase S-ILS 26 Cat E visibility to RVR 4000 and increase S-LOC 26 Cat C/D/E visibility to RVR 4500. #RVR 1800 authorized with use of FD or AP or HUD to DA.</p>	<p>MALSR</p>	<p>MISSED APPROACH: Climb to 3800 then climbing right turn to 4800 direct LBB VORTAC and hold (TACAN aircraft climb to 3800 then climbing right turn to 5100 on heading 300° and on LBB VORTAC R-035 to JAZDE/LBB 5 DME and hold northeast left turn 215° inbound).</p>
---	---------------------	--

<p>ATIS 125.3 270.275</p>	<p>LUBBOCK APP CON 119.2 351.8</p>	<p>LUBBOCK TOWER 120.5 239.3</p>	<p>GND CON 121.9 348.6</p>	<p>CLNC DEL 125.8 281.55</p>
--------------------------------------	---	---	---------------------------------------	---



ELEV 3282	D	TDZE 3255
-----------	----------	-----------



REIL Rwy 8	3350	11500 X 150	8	8003 X 150	26	26	35L	35R
FAF to MAP 3.7 NM	3379	2891 X 74	35L	35R	26	26	35L	35R
Knots	60	90	120	150	180			
Min:Sec	3:42	2:28	1:51	1:29	1:14			
CIRCLING	3720-1 438 (500-1)	3740-1 458 (500-1)	3880-1½ 598 (600-1½)	3940-2 658 (700-2)	4100-3 818 (900-3)			

SC-2, 20 MAR 2025 to 17 APR 2025

SC-2, 20 MAR 2025 to 17 APR 2025