

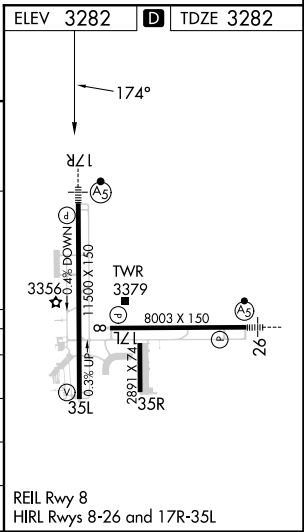
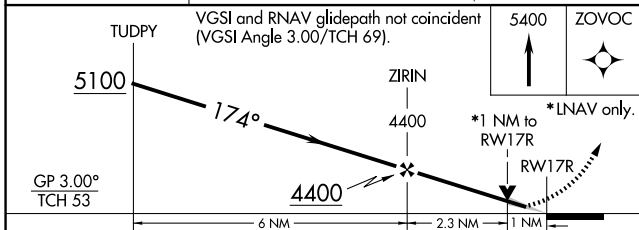
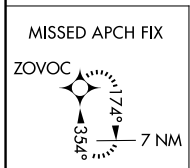
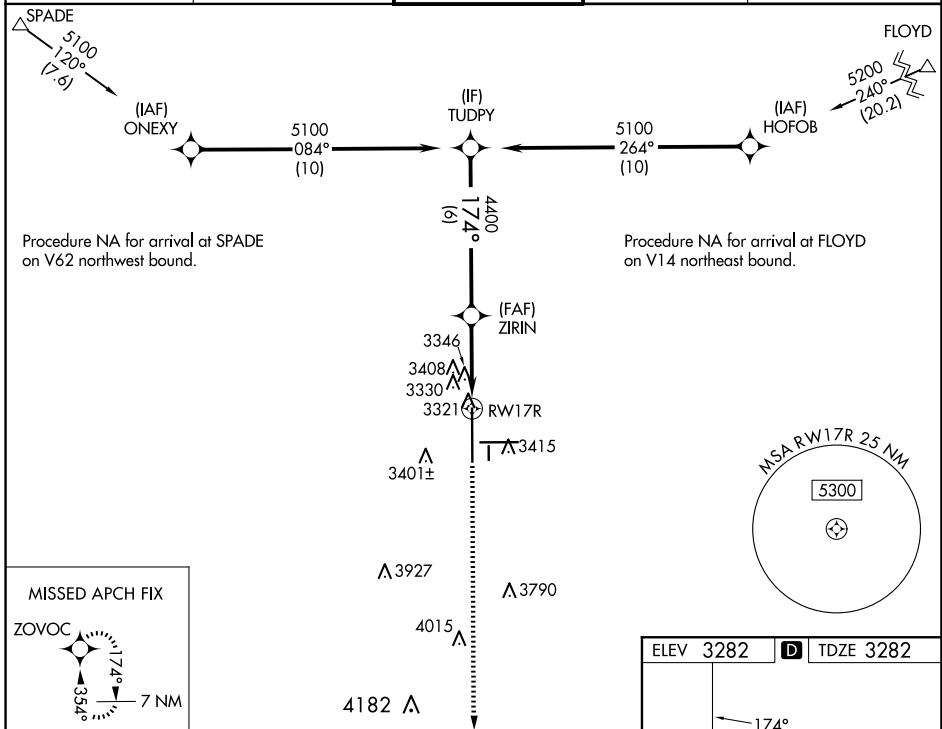
WAAS CH <b>40028</b> <b>W17A</b>	APP CRS <b>174°</b>	Rwy Idg TDZE <b>3282</b> Apt Elev <b>3282</b>
--	------------------------	---

# RNAV (GPS) Y RWY 17R

LUBBOCK PRESTON SMITH INTL (LBB)

RNP APCH.	<p>▼ For uncompensated Baro-VNAV systems, LNAV/VNAV NA below -12°C or above 51°C. ▲ For inop ALS increase LPV Cat E visibility to RVR 4000, LNAV/VNAV Cat E visibility to RVR 5000 and LNAV Cat A/B visibility to RVR 5500 and Cat C/D/E visibility to RVR 6000. ** RVR 1800 authorized with use of FD or AP or HUD to DA.</p>	MALSR	MISSED APPROACH: Climb to 5400 direct ZOVOC and hold.
-----------	--	-------	---

ATIS <b>125.3 270.275</b>	LUBBOCK APP CON <b>119.2 351.8</b>	LUBBOCK TOWER <b>120.5 239.3</b>	GND CON <b>121.9 348.6</b>	CLNC DEL <b>125.8 281.55</b>
------------------------------	---------------------------------------	-------------------------------------	-------------------------------	---------------------------------



CATEGORY	A	B	C	D	E
LPV DA **	3482/24		200 (200-½)		
LNAV/VNAV DA	3591/24		309 (400-½)		
LNAV MDA	3700/24 418 (500-½)		3700/40 418 (500-¾)		
CIRCLING	3720-1 438 (500-1)	3740-1 458 (500-1)	3880-1½ 598 (600-1½)	3940-2 658 (700-2)	4100-3 818 (900-3)

SC-2, 20 MAR 2025 to 17 APR 2025

SC-2, 20 MAR 2025 to 17 APR 2025