

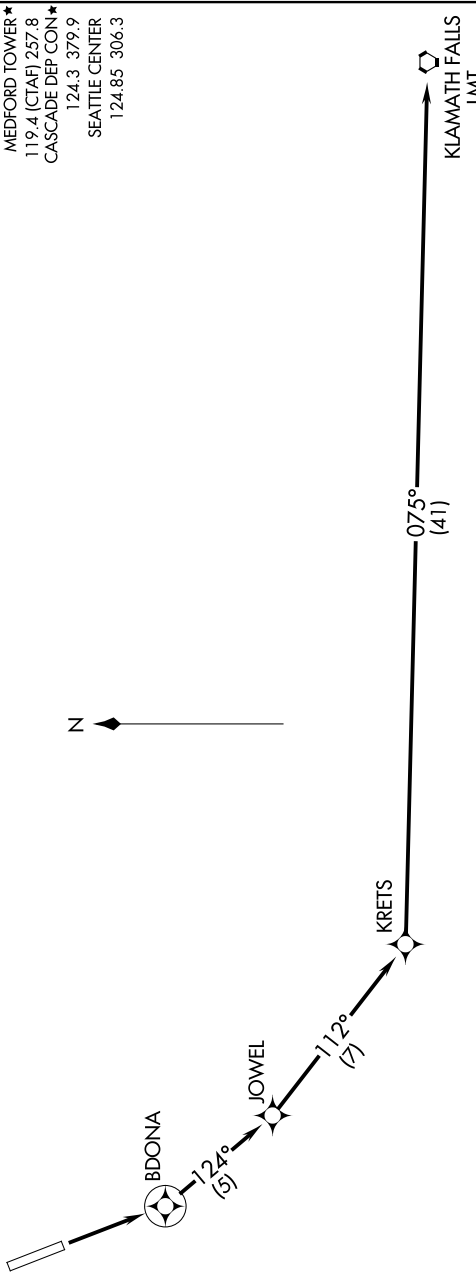
# KLAMATH FALLS ONE DEPARTURE (RNAV)

NW-1, 20 MAR 2025 to 17 APR 2025

ATIS 127.25  
 GND CON 121.8  
 MEDFORD TOWER\* 119.4 (CTAF) 257.8  
 CASCADE DEP CON\* 124.3 379.9  
 SEATTLE CENTER 124.85 306.3

RNAV 1 - DME/DME/IRU or GPS.  
 RADAR required for non-GPS equipped aircraft.

**TOP ALTITUDE:  
 ASSIGNED BY ATC**



NOTE: For non-GPS aircraft, F/S DME must be operational.  
 TAKEOFF MINIMUMS  
 Rwy 14: Standard with minimum climb of 425' per NM to 6400.

NOTE: Chart not to scale.

**DEPARTURE ROUTE DESCRIPTION**

TAKEOFF RUNWAY 14: Climb direct BDONA, then on track 124° to JOWEL, then on track 112° to KRETS, then on track 075° to LMT VORTAC. Expect RADAR vectors on course. Maintain assigned altitude. Expect filed altitude five minutes after departure.

NW-1, 20 MAR 2025 to 17 APR 2025