

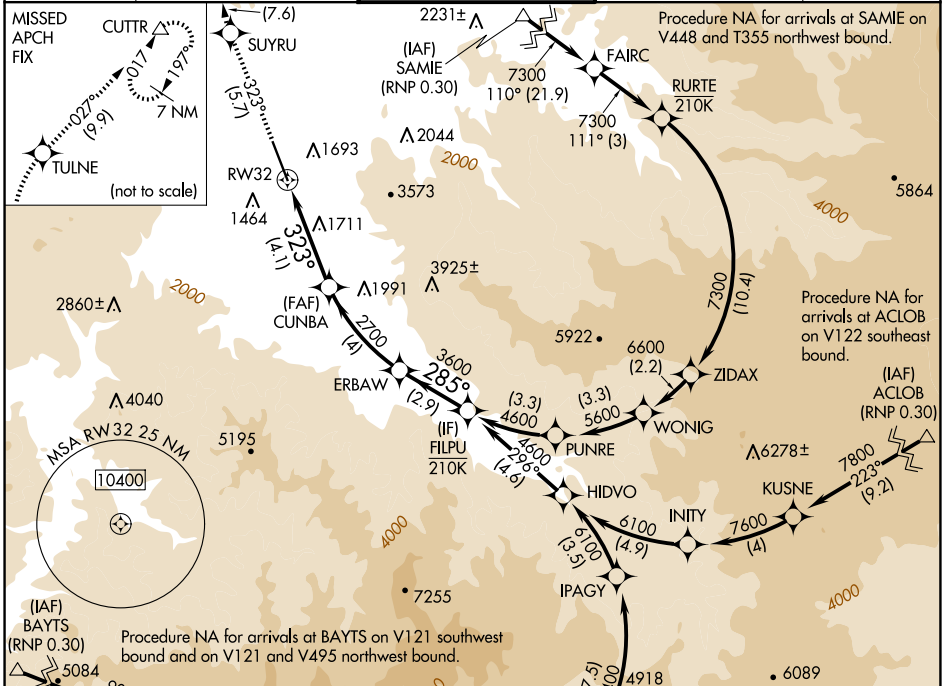
APP CRS	Rwy Idg	8800
323°	TDZE	1335
	Apt Elev	1335

RNAV (RNP) Z RWY 32

ROGUE VALLEY INTL/MEDFORD (MFR)

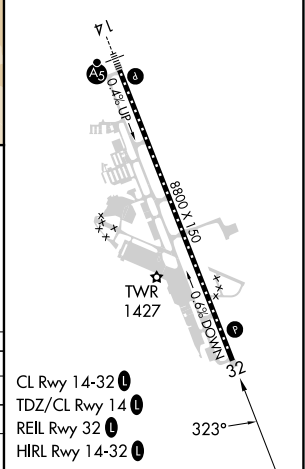
RNP AR APCH-GPS.	MISSED APPROACH: Climb to 9000 on 323° to SUYRU, right turn to TULNE, then on track 027° to CUTTR and hold, continue climb-in-hold to 9000.
▼ For uncompensated Baro-VNAV systems, procedure NA below -6°C or above 54°C.	

ATIS 127.25	CASCADE APP CON * 124.3 379.9	MEDFORD TOWER * 119.4 (CTAF) 0 257.8	GND CON 121.8	UNICOM 122.95
-----------------------	---	--	-------------------------	-------------------------



9000	SUYRU	TULNE	CUTTR										
↑ 323°	↻	↻ tr 027°	△										
<table border="1"> <tr> <td>ERBAW</td> <td>FILPU</td> </tr> <tr> <td>285° 4600</td> <td>3600</td> </tr> <tr> <td>CUNBA</td> <td>GP 3.00°</td> </tr> <tr> <td>2700</td> <td>TCH 50</td> </tr> <tr> <td>2700</td> <td></td> </tr> </table>				ERBAW	FILPU	285° 4600	3600	CUNBA	GP 3.00°	2700	TCH 50	2700	
ERBAW	FILPU												
285° 4600	3600												
CUNBA	GP 3.00°												
2700	TCH 50												
2700													
RW32 2700 2700													
4.1 NM 4 NM 2.9 NM													

ELEV 1335	TDZE 1335
-----------	-----------



CATEGORY	A	B	C	D
RNP 0.10 DA	1683-1		348 (400-1)	
RNP 0.30 DA	1870-1½		535 (600-1½)	

AUTHORIZATION REQUIRED

NW-1, 20 MAR 2025 to 17 APR 2025

NW-1, 20 MAR 2025 to 17 APR 2025

- CL Rwy 14-32
- TDZ/CL Rwy 14
- REIL Rwy 32
- HIRL Rwy 14-32