

LOC I-MLB	APP CRS	Rwy Idg	9482
108.3	274°	TDZE	26
		Apt Elev	33

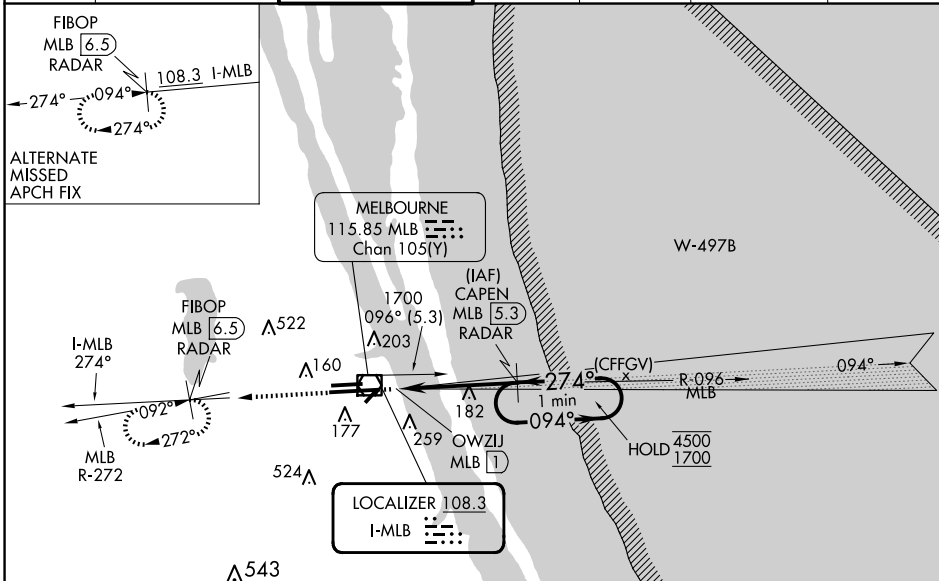
LOC BC RWY 27L

MELBOURNE ORLANDO INTL (MLB)

DME or RADAR required.

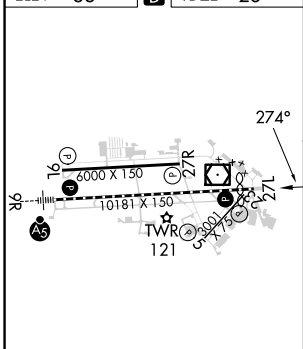
MISSED APPROACH: Climb to 1600 on MLB VOR/DME R-272 to FIBOP/MLB VOR/DME 6.5 DME/RADAR and hold.

ATIS	ORLANDO APP CON	MELBOURNE TOWER ★	GND CON	CLNC DEL	CLNC DEL	UNICOM
132.55	132.65 281.425	118.2(CTAF) 257.8	121.9	121.9	132.65 (When twr closed)	122.95



BACK COURSE

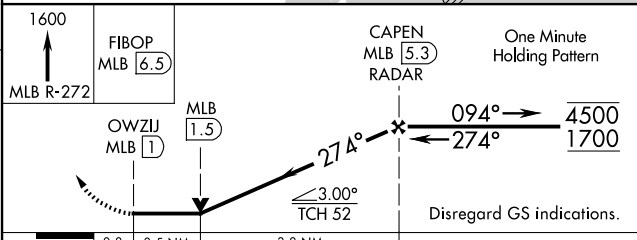
ELEV 33	D	TDZE 26
---------	----------	---------



TDZ/CL Rwy 9R
REIL Rwy 27L
MIRL Rwys 5-23 and 9L-27R
HIRL Rwy 9R-27L

FAF to MAP 4.3 NM

Knots	60	90	120	150	180
Min:Sec	4:18	2:52	2:09	1:43	1:26



CATEGORY	A	B	C	D
S-27L	500-1	474 (500-1)	500-1 $\frac{3}{8}$	474 (500-1 $\frac{3}{8}$)
CIRCLING	500-1 467 (500-1)	560-1 527 (600-1)	680-1 $\frac{3}{4}$ 647 (700-1 $\frac{3}{4}$)	880-2 $\frac{3}{4}$ 847 (900-2 $\frac{3}{4}$)

SE-3, 20 MAR 2025 to 17 APR 2025

SE-3, 20 MAR 2025 to 17 APR 2025