

AZONE SEVEN DEPARTURE (RNAV)
(AZONE7.AZONE) 31 DEC 20

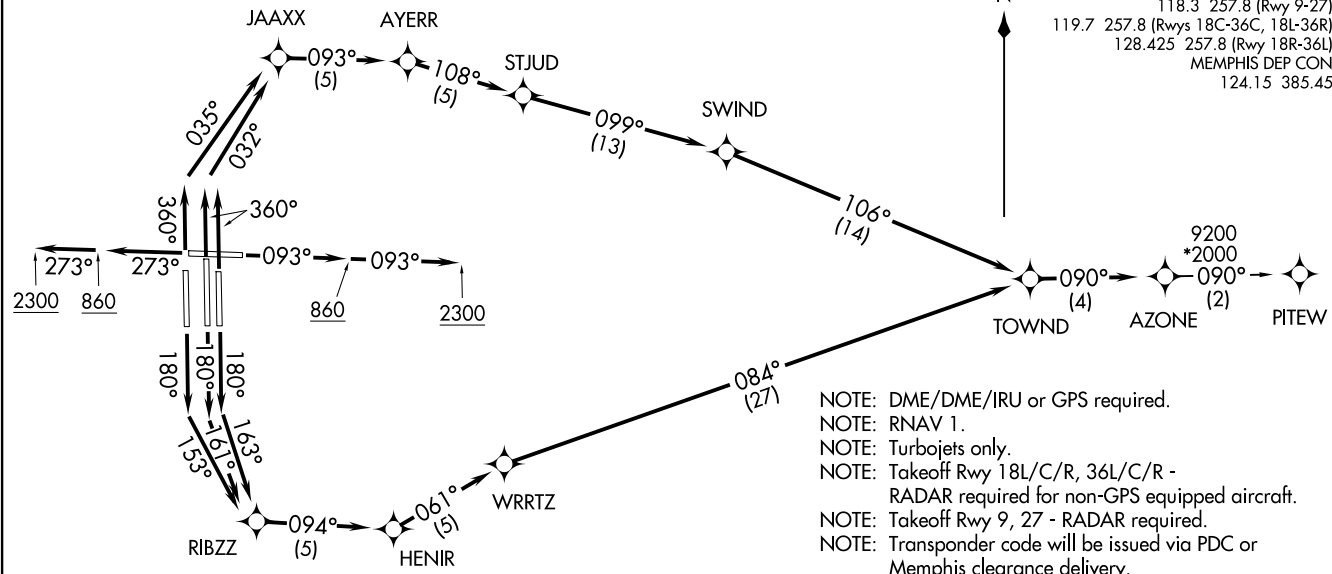
(AZONE7.AZONE) 20366

AL-253 (FAA)

MEMPHIS INTL (MEM)
MEMPHIS, TENNESSEE

D-ATIS 127.75
 CLNC DEL 125.2
 CPDLC
 GND CON
 121.0 379.2 (Rwy 9-27)
 121.9 379.2 (Rwys 18C-36C, 18L-36R)
 121.65 379.2 (Rwy 18R-36L)
 MEMPHIS TOWER
 118.3 257.8 (Rwy 9-27)
 119.7 257.8 (Rwys 18C-36C, 18L-36R)
 128.425 257.8 (Rwy 18R-36L)
 MEMPHIS DEP CON
 124.15 385.45

**TOP ALTITUDE:
5000**



TAKEOFF MINIMUMS:

Rwy 9, 18L/C/R, 27, 36L/C/R: Standard with minimum climb of 500' per NM to 860.

NOTE: Chart not to scale.

(NARRATIVE ON FOLLOWING PAGE)

- NOTE: DME/DME/IRU or GPS required.
- NOTE: RNAV 1.
- NOTE: Turbojets only.
- NOTE: Takeoff Rwy 18L/C/R, 36L/C/R - RADAR required for non-GPS equipped aircraft.
- NOTE: Takeoff Rwy 9, 27 - RADAR required.
- NOTE: Transponder code will be issued via PDC or Memphis clearance delivery.
- NOTE: Accelerate to 250K, reaching 10000 MSL, maintain 250K or greater, if unable advise ATC.
- NOTE: Procedure not authorized when Columbus 4 MOA active.
- NOTE: If unable to accept climb rate, advise ATC on initial contact.

MEMPHIS, TENNESSEE
MEMPHIS INTL (MEM)



DEPARTURE ROUTE DESCRIPTION

TAKEOFF RUNWAY 9: Climb on heading 093° to 860, then continue climb to 2300 on heading 093° or as assigned by ATC, for vectors to TOWND, then on depicted route to AZONE, thence....

TAKEOFF RUNWAY 18C: Climb on heading 180° to intercept course 161° to RIBZZ, then on depicted route to AZONE, thence....

TAKEOFF RUNWAY 18L: Climb on heading 180° to intercept course 163° to RIBZZ, then on depicted route to AZONE, thence....

TAKEOFF RUNWAY 18R: Climb on heading 180° to intercept course 153° to RIBZZ, then on depicted route to AZONE, thence....

TAKEOFF RUNWAY 27: Climb on heading 273° to 860, then continue climb to 2300 on heading 273° or as assigned by ATC, for vectors to TOWND, then on depicted route to AZONE, thence....

TAKEOFF RUNWAY 36L: Climb on heading 360° to intercept course 035° to JAAXX, then on depicted route to AZONE, thence....

TAKEOFF RUNWAYS 36C/R: Climb on heading 360° to intercept course 032° to JAAXX, then on depicted route to AZONE, thence....

....maintain 5000. Expect clearance to filed altitude within ten (10) minutes after departure.

PITBW TRANSITION (AZONE7.PITBW):

SE-1, 20 MAR 2025 to 17 APR 2025

SE-1, 20 MAR 2025 to 17 APR 2025