

# ELVIS FOUR DEPARTURE

AL-253 (FAA)

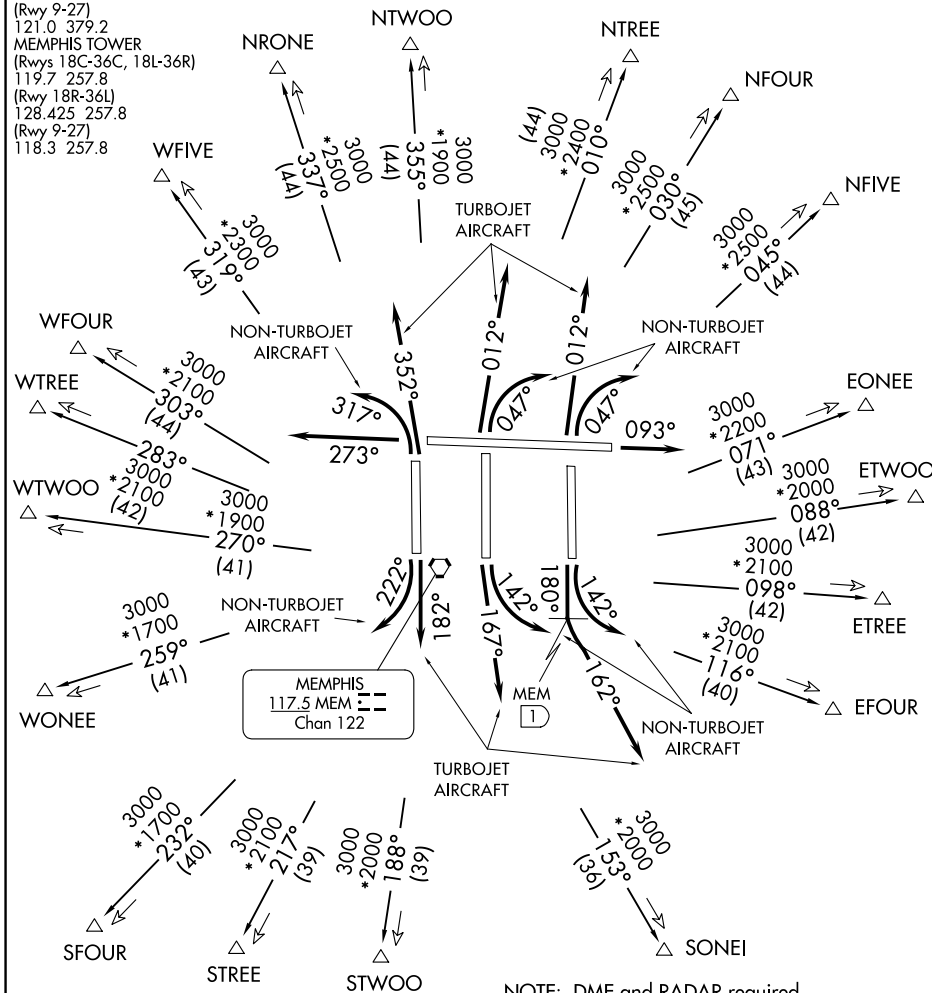
MEMPHIS INTL (MEM)

MEMPHIS, TENNESSEE

D-ATIS 127.75  
 CLNC DEL  
 125.2  
 CPDLC  
 GND CON  
 (Rwys 18C-36C, 18L-36R)  
 121.9 379.2  
 (Rwy 18R-36L)  
 121.65 379.2  
 (Rwy 9-27)  
 121.0 379.2  
 MEMPHIS TOWER  
 (Rwys 18C-36C, 18L-36R)  
 119.7 257.8  
 (Rwy 18R-36L)  
 128.425 257.8  
 (Rwy 9-27)  
 118.3 257.8

**TOP ALTITUDE:**  
**(JETS) 5000**  
**(PROPS) 3000**

MEMPHIS DEP CON  
 EONEE, ETWOO, ETREE, EFOUR  
 NTREE, NFOUR, NFIVE, SONEI  
 TRANSITIONS: 124.15 353.67  
 NRONE, NTWOO, STWOO, STREE  
 SFOUR, WONEE, WTWOO, WTREE,  
 WFOUR, WFIVE TRANSITIONS: 124.65 284.7



SE-1, 20 MAR 2025 to 17 APR 2025

SE-1, 20 MAR 2025 to 17 APR 2025

### TAKEOFF MINIMUMS:

Rwys 9, 18C/R, 27, 36L/C/R: Standard.  
 Rwy 18L: Props: Standard; Turbojets: Standard with minimum climb of 340' per NM to 800.

- NOTE: DME and RADAR required.
- NOTE: Make no turns below 800 MSL.
- NOTE: Turbojet aircraft accelerate to 250K immediately until reaching 10000 MSL, if unable advise ATC.
- NOTE: Transponder code will be issued via PDC or Memphis clearance delivery.

(NARRATIVE ON FOLLOWING PAGES)

NOTE: Chart not to scale.

# ELVIS FOUR DEPARTURE

MEMPHIS, TENNESSEE

MEMPHIS INTL (MEM)



DEPARTURE ROUTE DESCRIPTION

ALL AIRCRAFT

TAKEOFF RWY 9: Climb heading 093° or as assigned by ATC, thence....

TAKEOFF RWY 27: Climb heading 273° or as assigned by ATC, thence....

TURBOJET AIRCRAFT

TAKEOFF RWY 18C: Climb heading 167° or as assigned by ATC, thence....

TAKEOFF RWY 18L: Climb heading 180° to 1 DME south of MEM VORTAC, then turn left heading 162° or as assigned by ATC, thence....

TAKEOFF RWY 18R: Climb heading 182° or as assigned by ATC, thence....

TAKEOFF RWY 36C: Climb heading 012° or assigned by ATC, thence....

TAKEOFF RWY 36L: Climb heading 352° or as assigned by ATC, thence....

TAKEOFF RWY 36R: Climb heading 012° or as assigned by ATC, thence....

NON-TURBOJET AIRCRAFT

TAKEOFF RWY 18C: Climbing left turn heading 142° or as assigned by ATC, thence....

TAKEOFF RWY 18L: Climbing left turn heading 142° or as assigned by ATC, thence....

TAKEOFF RWY 18R: Climbing right turn heading 222° or as assigned by ATC, thence....

TAKEOFF RWY 36C: Climbing right turn heading 047° or as assigned by ATC, thence....

TAKEOFF RWY 36L: Climbing left turn heading 317° or as assigned by ATC, thence....

TAKEOFF RWY 36R: Climbing right turn heading 047° or as assigned by ATC, thence....

....expect vectors to join assigned transition radial. Crossing the transition fix, continue on current heading, expect vectors from Memphis Center to join filed route. Jet aircraft maintain 5000 (or requested altitude if lower). Prop aircraft maintain 3000. Expect clearance to filed altitude within ten (10) minutes after departure.

EFOUR TRANSITION (ELVIS4.EFOUR): From over MEM VORTAC on MEM R-116 to EFOUR.

EONEE TRANSITION (ELVIS4.EONEE): From over MEM VORTAC on MEM R-071 to EONEE.

ETREE TRANSITION (ELVIS4.ETREE): From over MEM VORTAC on MEM R-098 to ETREE.

ETWOO TRANSITION (ELVIS4.ETWOO): From over MEM VORTAC on MEM R-088 to ETWOO.

NFIVE TRANSITION (ELVIS4.NFIVE): From over MEM VORTAC on MEM R-045 to NFIVE.

NFOUR TRANSITION (ELVIS4.NFOUR): From over MEM VORTAC on MEM R-030 to NFOUR.

NRONE TRANSITION (ELVIS4.NRONE): From over MEM VORTAC on MEM R-337 to NRONE.

NTREE TRANSITION (ELVIS4.NTREE): From over MEM VORTAC on MEM R-010 to NTREE.

NTWOO TRANSITION (ELVIS4.NTWOO): From over MEM VORTAC on MEM R-355 to NTWOO.

SFOUR TRANSITION (ELVIS4.SFOUR): From over MEM VORTAC on MEM R-232 to SFOUR.

SONEI TRANSITION (ELVIS4.SONEI): From over MEM VORTAC on MEM R-153 to SONEI.

STREE TRANSITION (ELVIS4.STREE): From over MEM VORTAC on MEM R-217 to STREE.

STWOO TRANSITION (ELVIS4.STWOO): From over MEM VORTAC on MEM R-188 to STWOO.

WFIVE TRANSITION (ELVIS4.WFIVE): From over MEM VORTAC on MEM R-319 to WFIVE.

WFOUR TRANSITION (ELVIS4.WFOUR): From over MEM VORTAC on MEM R-303 to WFOUR.

WONEE TRANSITION (ELVIS4.WONEE): From over MEM VORTAC on MEM R-259 to WONEE.

WTREE TRANSITION (ELVIS4.WTREE): From over MEM VORTAC on MEM R-283 to WTREE.

WTWOO TRANSITION (ELVIS4.WTWOO): From over MEM VORTAC on MEM R-270 to WTWOO.

(NOTES CONTINUED ON FOLLOWING PAGE)

SE-1, 20 MAR 2025 to 17 APR 2025

SE-1, 20 MAR 2025 to 17 APR 2025

- NOTE: NFIVE, EFOUR, STREE, SFOUR, WFOUR, and WFIVE transitions authorized 0200-0600 local only.
- NOTE: ETWOO and WTREE transitions restricted to aircraft requesting 9000 MSL or below, sunrise to sunset, Monday-Friday. Restrictions do not apply on weekday nights, weekends, or holidays.
- NOTE: NRONE transition restricted to Prop/Turboprop aircraft requesting 14000 MSL or below. Restriction does not apply 0200-0600 local.
- NOTE: SONEI transition restricted to aircraft requesting 7000 MSL or below, sunrise to sunset, Monday-Friday. Restrictions do not apply on weekday nights, weekends, or holidays.
- NOTE: Aircraft filing flight plans that do not meet the authorized time, altitude, or aircraft type restrictions may experience delays.

FIX NAME PRONUNCIATION:

<u>EONEE</u>	<u>EAST ONE</u>
<u>ETWOO</u>	<u>EAST TWO</u>
<u>ETREE</u>	<u>EAST THREE</u>
<u>EFOUR</u>	<u>EAST FOUR</u>
<u>SONEI</u>	<u>SOUTH ONE</u>
<u>STWOO</u>	<u>SOUTH TWO</u>
<u>STREE</u>	<u>SOUTH THREE</u>
<u>SFOUR</u>	<u>SOUTH FOUR</u>
<u>WONEE</u>	<u>WEST ONE</u>
<u>WTWOO</u>	<u>WEST TWO</u>
<u>WTREE</u>	<u>WEST THREE</u>
<u>WFOUR</u>	<u>WEST FOUR</u>
<u>WFIVE</u>	<u>WEST FIVE</u>
<u>NRONE</u>	<u>NORTH ONE</u>
<u>NTWOO</u>	<u>NORTH TWO</u>
<u>NTREE</u>	<u>NORTH THREE</u>
<u>NFOUR</u>	<u>NORTH FOUR</u>
<u>NFIVE</u>	<u>NORTH FIVE</u>

SE-1, 20 MAR 2025 to 17 APR 2025

SE-1, 20 MAR 2025 to 17 APR 2025