

LOC/DME I-EXS 111.15	APP CRS 180°	Rwy Idg 9000
Chan 48(Y)		TDZE 301
		Apt Elev 341

ILS or LOC RWY 18L

MEMPHIS INTL (MEM)

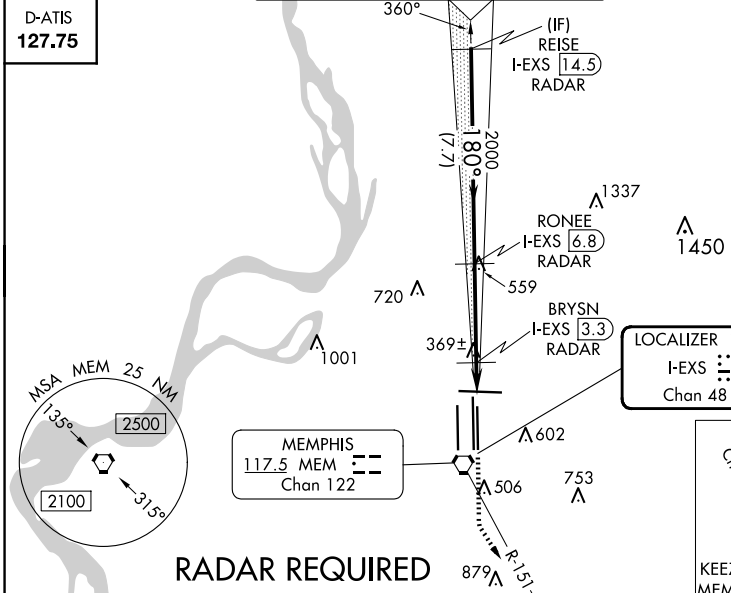
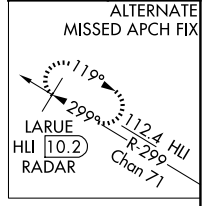
⚠ Simultaneous approach authorized. DME or RADAR required. For inop ALS, increase S-ILS 18L Cat E visibility to RVR 4000, S-LOC 18L Cat E visibility to 1 3/4 SM, BRYSN fix minimums, increase S-LOC 18L Cats D and E visibility to RVR 5000.

MALSR
MISSED APPROACH: Climb to 900 then climbing left turn to 5000 on MEM VORTAC R-151 to KEEZE INT/MEM 10.4 DME and hold, continue climb-in-hold to 5000.

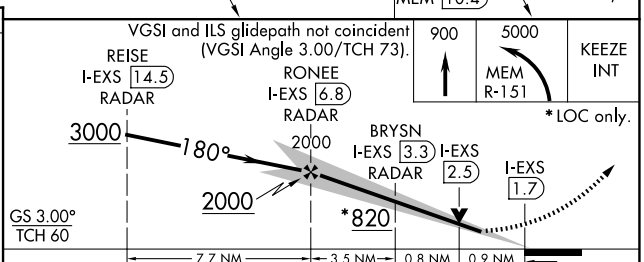
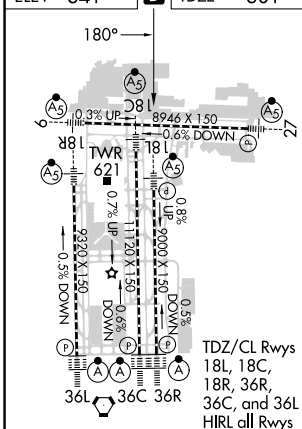
MEMPHIS APP CON 119.1 291.6 (176°-355°) 125.8 338.3 (356°-175°)	MEMPHIS TOWER (Rwy 9-27) 118.3 257.8 (Rwys 18C-36C, 18L-36R) 119.7 257.8 (Rwy 18R-36L) 128.425 257.8	GND CON (Rwy 9-27) 121.0 379.2 (Rwys 18C-36C, 18L-36R) 121.9 379.2 (Rwy 18R-36L) 121.65 379.2
---	--	---

D-ATIS
127.75

CLNC DEL **125.2** CPDLC



ELEV 341	TDZE 301
----------	----------



CATEGORY	A	B	C	D	E
S-ILS 18L	501/18 200 (200-1/2)				501/24 200 (200-1/2)
S-LOC 18L	820/24	519 (500-1/2)	820/50 519 (500-1)	820/60	519 (500-1 1/4)
CIRCLING	940-1	599 (600-1)	940-1 1/2 599 (600-1 1/2)	1020-2 1/4 679 (700-2 1/4)	1140-2 3/4 799 (800-2 3/4)
BRYSN FIX MINIMUMS					
S-LOC 18L	620/24 319 (300-1/2)		620/40 319 (300-3/4)		
CIRCLING	940-1	599 (600-1)	940-1 1/2 599 (600-1 1/2)	1020-2 1/4 679 (700-2 1/4)	1140-2 3/4 799 (800-2 3/4)

Knots	60	90	120	150	180
Min:Sec	5:12	3:28	2:36	2:05	1:44

SE-1, 20 MAR 2025 to 17 APR 2025

SE-1, 20 MAR 2025 to 17 APR 2025